

SAMZO

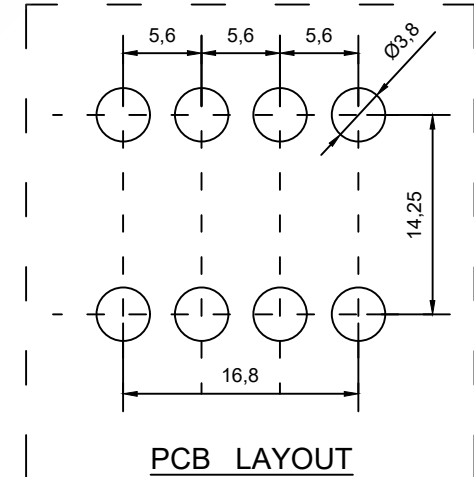
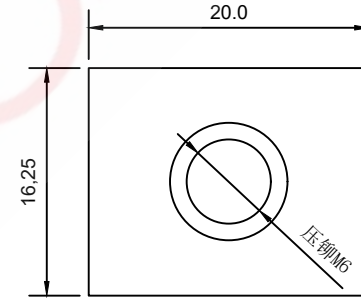
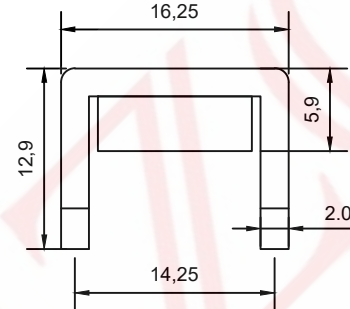
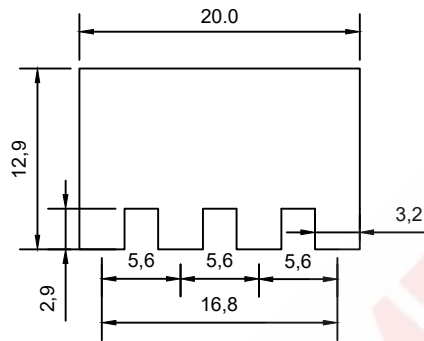
REAC/ROHS

REV	ECN NO	DESCRIPTION	DESIGN	APPROVAL	DATE
A1	NEW	Replace frame			2018.06.12

技术要求:

Technical requirements:

- 打铜底0.5-1UM, 镍底2-2.5UM, 哑锡3-5UM。  
Copper base 0.5 - 1 UM, nickel base 2 - 2.5 UM, matte tin 3 - 5 UM.
- 不得有脚变形, 毛刺等缺陷。  
There shall be no defects such as pin deformation and burrs.
- 插脚尖部符合可焊性要求。  
The tip of the insertion pin shall meet the solderability requirements.
- 螺纹需符合通止规要求。  
The thread shall meet the requirements of the go and no-go gauge.
- 材质: 黄铜H65。  
Material: Brass H65.
- 过载电流: 110A  
Overload current: 110A
- 螺孔为压铆 M6  
The screw holes are press-riveted M6
- 未标注尺寸公差值按GB/T1184-1996H级  
Unmarked dimensional tolerance values are in accordance with Grade H of GB/T1184-1996



1620 100 29 0 M6

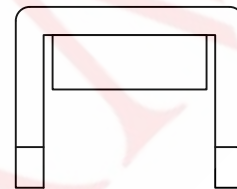
SERISE:  
16\*20mm

FOOT HIGH:  
H2. 9mm

SCREW HOLE:  
M6

HIGH:  
H10. 0mm

CUSTOM CODE:  
ROUTINE

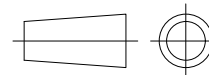


压铆M6

PCB LAYOUT

ITEM	DESCRIPTION	MATERIAL	QTY	FINSH/COLOR					
A	Subject	H62(Y2)	1	tin plating					
					GENERAL TOLERANCE				
					≥0~2<	±0.15			
					DESIGN	WANGGUIFA	2018.06.12	≥2~5<	±0.25
					CHECKED	ZHENGUILAN	2018.06.12	≥0~2<	±0.15
					APPROVED	LILIANJIANG	2018.06.14	≥5	±0.35

FIRST VIEW



The copyright belongs to samzo parts [China] Co., Ltd. please use the material after samzo parts agree to authorize. The final right of interpretation belongs to samzo parts.  
WWW.KKK-JP.COM

TITLE::

16\*20-H10+2.9mm (M6)

DWG NO: 1620-P003

PART NO: 1620-20230931

MODEL NO: 1620100290M6

NAME:

PCB soldering terminal

SAMZO COMPONENTS  
Electronic switch and connector manufacturer

SCALE 1:1 UNIT mm