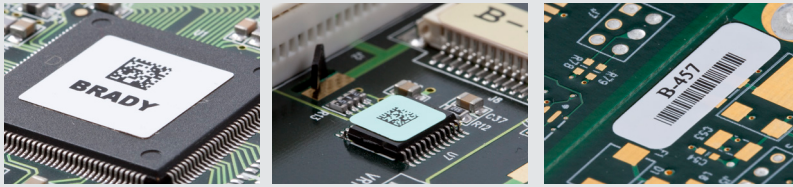


Circuit Board Materials

BradyID.com



Printer Compatibility

All circuit board parts shown on the following pages are compatible with the following printers unless otherwise noted.



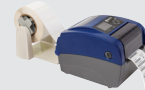
Bradyprinter™ PR Plus Printers

See Page 130



Brady IP™ Printer

See Page 128



BBP®12 Label Printer

3" Core Label Rolls are compatible when used with Media Holder accessory.

Circuit Board Identification Material

Improve processes and reduce operating costs with clearly identified circuit boards.

Brady's circuit board material, or PCB labels, are polyimide labels that can withstand the high heats and powerful chemicals used in PCB manufacturing. Brady offers PCB labels in a variety of materials, including anti-static PCB labels and labels for auto-apply applications. These high temp circuit board materials can improve your processes and reduce operating costs by identifying your circuit boards throughout the entire PCB manufacturing process.

! Understanding THT Label Part Numbers

Example:

THT-5-423-10

<p>Technology: Thermal Transfer</p>	<p>Quantity: Multiply by 1,000 10 x 1,000 = 10,000</p>
<p>Die Cut: #5, 1.000" x 0.500"</p>	<p>Material Number: B-423, Gloss White Polyester</p>

THT Label Materials

Circuit Board



B-436 Removable Polyimide Material

Color: Amber Finish: Matte

Amber polyimide material with matte finish for thermal transfer printing. Removal silicone adhesive for temporary preprocess labeling on printed circuit board or electronic components that require clean removability.

Performance Attributes:

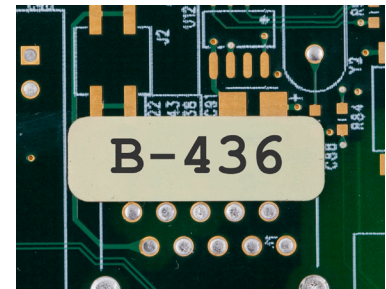
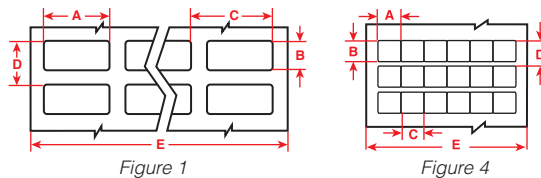


Diagram	Catalog #	Material	Color	Label Width A Inch (mm)	Label Height B Inch (mm)	Horiz. Repeat C Inch (mm)	Vert. Repeat D Inch (mm)	Web Width E Inch (mm)	Labels Per Row	Labels Per Pkg	Rec. Ribbon
Fig. 4	THT-11-436-10	Polyimide	Amber	0.250 (6.4)	0.250 (6.4)	0.250 (6.4)	0.375 (9.5)	3.200 (81.3)	12	10,000	R4300
Fig. 1	THT-14-436-10	Polyimide	Amber	0.650 (16.5)	0.200 (5.1)	0.700 (17.8)	0.300 (7.6)	2.950 (74.9)	4	10,000	R4300
Fig. 1	THT-1-436-10	Polyimide	Amber	0.750 (19.1)	0.250 (6.4)	0.800 (20.3)	0.350 (8.9)	3.350 (85.1)	4	10,000	R4307, R4707