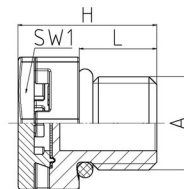
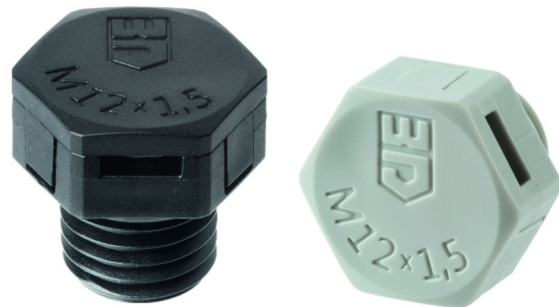


Venting element

Body	Polyamide PA6 V-0
Membrane	Polyether sulphone PES
O-ring	Nitrile rubber NBR
Connecting thread	metric, as per EN 60423



Properties


	<ul style="list-style-type: none"> • protection for hermetically sealed electro-technical and electronic enclosures against condensation water from alternating temperature and pressure • pressure, continuous ventilation and adaption of the inner pressure • hydrophobic and oleophobic PES-membrane • Wheatering test and test resistance to light (UV) according to ISO 4892-2 • Polyamide material fulfills UL 94 V-0 and EN 45545-2, R22:HL3 / R23: HL3
Water entry pressure	> 0,83 bar (dynamic WEP, 30 seconds)
Temperature range	-40 °C +100 °C
Protection grade	IP66/ IP68 - 0,6 bar (60 min.)/ IP69
Comment	The venting element has no function if it is blocked with dust and / or submerged in water.

Features



RAL 9005


Connecting thread standard length

A	L	SW1	H	RQ*	 VPE	Part No.
M12x1,5	10	17	17,8	ca. 10	100	JDAE12PA/SW
M20x1,5	10	27	21,6	ca. 30	10	JDAE20PA/SW
M40x1,5	18	50	35,6	ca. 170	5	JDAE40PA/SW




RAL 7035


Connecting thread standard length

A	L	SW1	H	RQ*	 VPE	Part No.
M12x1,5	10	17	17,8	ca. 10	100	JDAE12PA7035
M20x1,5	10	27	21,6	ca. 30	10	JDAE20PA7035
M40x1,5	18	50	35,6	ca. 170	5	JDAE40PA7035

Connecting thread short

A	L	SW1	H1	RQ*	 VPE	Part No.
M12x1,5	6	17	13,8	ca. 10	100	JDAE12PA067035

Connecting thread short

A	L	SW1	H1	RQ*	 VPE	Part No.
M12x1,5	6	17	13,8	ca. 10	100	JDAE12PA06/SW

*RQ = theoretical air flow through usable surface at $\Delta p = 0,07$ bar

Comment: All listed parts- are in accordance with EN 45545-2, clause 4.5 "Non-listed products" with - exposed areas ≤ 0.20 m², location interior, R22- exposed areas ≤ 0.20 m², location exterior, R23- have according to EN 45545-2, clause 4.3.2, Rule 1 total, combustible / flammable mass of the products < 100 g for grouped products, location interior < 400 g für grouped products, location exterior.

Assembly only with suitable tool, for example box spanner