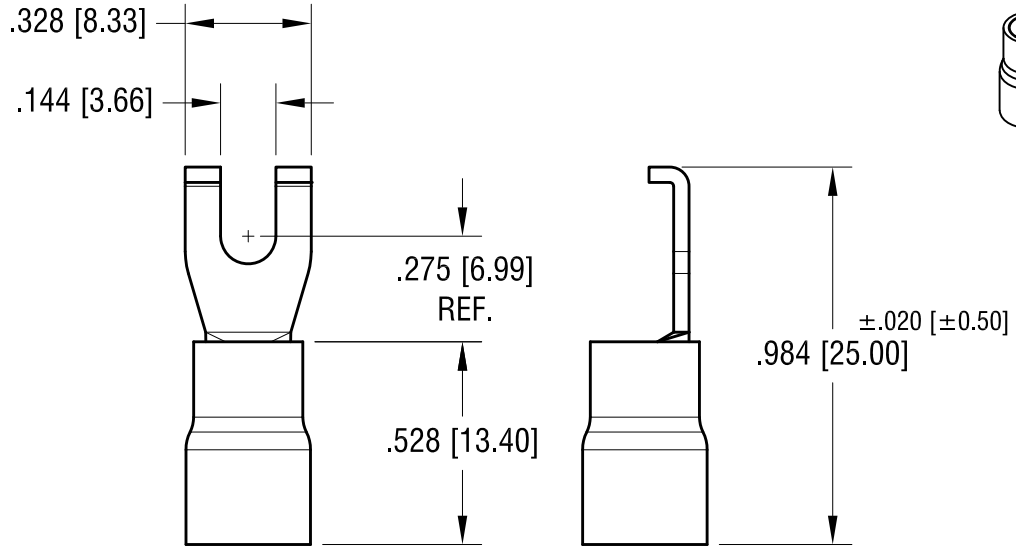
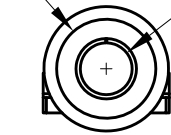


THIS DOCUMENT IS THE PROPERTY OF
KEYSTONE ELECTRONICS CORP. AND
SHALL NOT BE REPRODUCED, DISTRIBUTED
OR USED AS A BASIS FOR MANUFACTURE
WITHOUT PRIOR WRITTEN PERMISSION
FROM KEYSTONE ELECTRONICS CORP.

ACTUAL SIZE



FOR $\varnothing .250$ [$\varnothing 6.35$] MAX
WIRE INSULATOR I.D.



$\varnothing .135$ [$\varnothing 3.43$]
TERMINAL I.D.

NOTE:

1. TERMINAL: .040 [1.02] TH'K COPPER, TIN PLATE
INSULATOR: VINYL, YELLOW
2. ACCOMMODATES WIRE RANGE 12/10 AWG

KEYSTONE ELECTRONICS CORP.

www.keyelco.com • NEW HYDE PARK, NY 11040 • Tel (516) 328-7500

PART NAME
INSULATED FLANGED BLOCK SPADE TERMINAL

MATERIAL
AS NOTED

FINISH AS NOTED	DRN BY	BOONE	DATE	10.30.07
	APP'D	RH	SCALE	2X

12.28.23	CHANGE AS PER ECN 23-319	A
DATE	DESCRIPTION	REV.

TOLERANCES	INCH	[MM]	CODE	DWG NO.
DECIMAL	$\pm .010$	[± 0.25]	C	8251
ANGULAR	$\pm 1^\circ$			
UNLESS OTHERWISE SPECIFIED				