

Power Relay Series 功率继电器系列 -- BRF

FEATURES特点

- 20A contact switching capability
20A触点切换能力
- Plastic sealed and dust protected types available
塑封型和防尘罩型可供选择
- UL insulation system: Class F
UL绝缘等级: F级
- Overall dimensions (21.0X16.0X20.6) mm.
外形尺寸 (21.0X16.0X20.6) mm。



CONTACT PARAMETERS触点参数

Contact Form触点形式	A-1组常开 B-1组常闭 C-1组转换
Rating Load (Resistive) 额定负载 (阻性)	17A 277VAC 20A 125VAC
Max. Switching Current最大切换电流	20A
Max. Switching Voltage最大切换电压	277VAC
Max. Switching Power最大切换功率	4250VA

CHARACTERISTICS性能参数

Contact Materials触点材料	Ag Alloy银合金	
Contact Resistance接触电阻	100mΩ Max	
Operate Time吸合时间	10ms. Max	
Release Time释放时间	5ms. Max	
Insulation Resistance绝缘电阻	100MΩ Min. (DC500V)	
Initial Dielectric Strength介质耐压	between open contacts: 触点与触点间:	AC1,000V, 50/60Hz 1Min
	between contacts and coil: 触点与线圈间:	AC1,500V, 50/60Hz 1Min
Vibration Resistance抗振动	Damage limits: 耐久:	10~55Hz Double Amplitude双振幅1.5mm
	Malfunction: 误动作:	10~55Hz Double Amplitude双振幅1.5mm
Shock Resistance抗冲击	Damage limits: 耐久:	100G Min
	Malfunction: 误动作:	10G Min
Life寿命	Mechanical Life (10800 per hour) 机械寿命 (每小时10800次)	1×10 ⁷
	Electrical Life (1800 per hour) 电气寿命 (每小时1800次)	1×10 ⁵
Ambient Temperature环境温度	-40°C ~ +105°C (No condensation) (不冷凝)	
Unit Weight单位重量	约Approx. 14.0g	

COIL RATINGS (at23°C) 线圈参数 (在23°C)

Coil Nominal Voltage 额定电压 (VDC)	Nominal Current 额定电流 ±10%(mA)	Coil Resistance 线圈电阻 ±10% (Ω)	Max. Continuous Voltage 最大连续外加电压	Pick-Up Voltage 吸合电压 (Max)	Drop-Out Voltage 释放电压 (Min)	Rated power 额定功率
3	120.00	25	Coil Nominal Voltage 130% 额定电压的 130%	Coil Nominal Voltage 75% 额定电压的 75%	Coil Nominal Voltage 10% 额定电压的 10%	About 0.36W
5	71.42	70				
6	60.00	100				
9	40.00	225				
12	30.00	400				
15	24.00	625				
18	20.00	900				
24	15.00	1,600				
48	7.50	6,400				

ORDERING INFORMATION 订货标记

BRF - SS - 1 12 D M (XXX)						
	<u>1</u>	<u>2</u>	<u>3</u>	<u>4</u>	<u>5</u>	<u>7</u>
1. Model Number 基本型号 BRF	5. Coil Power: D - 0.36W 线圈功耗: D - 0.36W					
2. Encapsulation form: SS-Plastic Sealed SH:Fluk proofed 封装形式: SS-塑封型 SH-防焊剂型	6. Contact form: M-1Form A, B-1Form B, Nil -1Form C 触点形式: M-1组常开 B-1组常闭 无-1组转换					
3. Number or pole : 1 - 1 pole 触点组数: 1 - 1 组触点	7. Customer Special Code :XXX- Customer Special Requirements No - Standard Type 客户特性号: XXX-客户特殊要求, 无-标准型					
4. Coil Voltage 线圈规格 (VDC): DC3V, DC5V, DC6V, DC9V, DC12V, DC15V, DC18V, DC24V, DC48V						

SAFETY STANDARD 安规认证

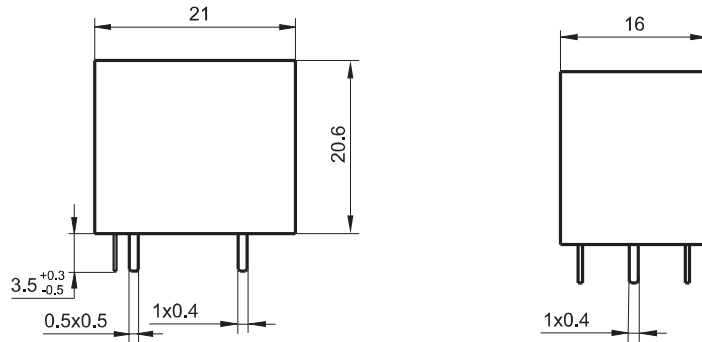
AuthType Basic 认证类别	CQC	TUV	UL (T105)
Authentication Load 认证负载	17A 250VAC 20A 125VAC	17A 250VAC 20A 125VAC	17A 277VAC 20A 125VAC 1HP 250VAC TV-8 125VAC

TYPICAL USE 典型用途

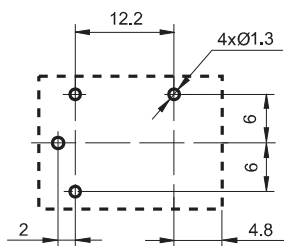
- 家用电器: 空调、电热器等 Vending Machines
- 自动售货机 Household appliances: Air conditioning, Electric heaters, Etc..
- 办公室设备: 电脑、传真机等 Office equipment: Computer, Fax, Etc..
- 智能家居产品 Smart Home Products

OUTLINE DIMENSIONS (UNIT:mm)外形尺寸 (单位: mm)

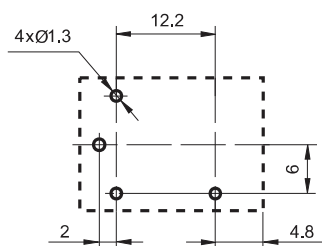
外形图



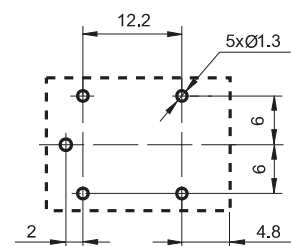
安装孔尺寸(底视图)



一组常开

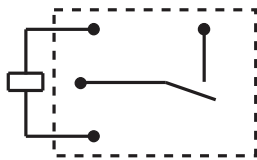


一组常闭

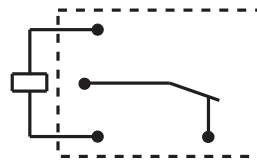


一组转换

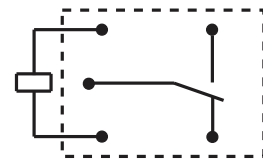
接线图(底视图)



一组常开



一组常闭



一组转换

PERFORMANCE CHART性能曲线图

