



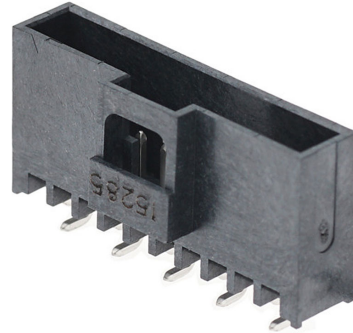
Part Number : [1510621459](#)

Product Description : 2.00mm Pitch, Milli-Grid PCB Header, Single Row, Vertical, Surface Mount, 2.50µm Tin (Sn) Plating, with Peg, with Pick and Place Cap, 9 Circuits, Tube

Series Number : 151062

Status : Active

Product Category : PCB Headers and Receptacles



Documents & Resources

Drawings

[Drawing 1510621459_sd.pdf](#)

[Packaging Design Drawing PK-151062-0001-001.pdf](#)

3D Models and Design Files

[3D Model 1510621459_stp.zip](#)

Specifications

[Application Specification 503940001-AS-000.pdf](#)

[Product Specification PS-151062-0001-001.pdf](#)

Product Environment Compliance

Compliance

GADSL/IMDS	Compliant with Exemption 44; 33
China RoHS	
EU ELV	Not Relevant
Low-Halogen Status	Low-Halogen per IEC 61249-2-21
REACH SVHC	Not Contained per D(2024)4144-DC (27 June 2024)
EU RoHS	Compliant per EU 2015/863

[Multiple Part Product Compliance Statements](#)

- Eu RoHS
- REACH SVHC
- Low-Halogen

[Multiple Part Industry Compliance Documents](#)

- IPC 1752A Class C
- IPC 1752A Class D
- Molex Product Compliance Declaration
- IEC-62474
- chemSHERPA (xml)

EU RoHS Certificate of Compliance

Part Details

General

Status	Active
Category	PCB Headers and Receptacles
Series	151062
Description	2.00mm Pitch, Milli-Grid PCB Header, Single Row, Vertical, Surface Mount, 2.50µm Tin (Sn) Plating, with Peg, with Pick and Place Cap, 9 Circuits, Tube
Application	Signal, Wire-to-Board
Comments	See Product Specification for maximum current rating by wire AWG
Component Type	PCB Header
Product Family	Milli-Grid Connector System
Product Name	Milli-Grid
UPC	889056695688

Electrical

Current - Maximum per Contact	2.5A
Voltage - Maximum	125V AC

Physical

Breakaway	No
Circuits (Loaded)	9
Circuits (maximum)	9
Color - Resin	Black
Durability (mating cycles max)	25
First Mate / Last Break	No
Glow-Wire Capable	No

Guide to Mating Part	No
Keying to Mating Part	None
Lock to Mating Part	Yes
Material - Metal	Copper Alloy
Material - Plating Mating	Tin
Material - Plating Termination	Tin
Material - Resin	Liquid Crystal Polymer
Net Weight	871.368/mg
Number of Rows	1
Orientation	Vertical
Packaging Type	Tube
PCB Locator	Yes
PCB Retention	Yes
Pitch - Mating Interface	2.00mm
Pitch - Termination Interface	2.00mm
Plating min - Mating	2.500µm
Plating min - Termination	2.000µm
Polarized to Mating Part	Yes
Polarized to PCB	Yes
Robotic Placement	Pick and Place Cap
Shrouded	Yes
Stackable	No
Temperature Range - Operating	-40° to +70°C
Termination Interface Style	Surface Mount

Solder Process Data

Max-Duration	5
Lead-Free Process Capability	REFLOW
Max-Cycle	1
Max-Temp	260

Mates With / Use With

Mates with Part(s)

Description	Part Number
-------------	-------------

Milli-Grid Single Row Receptacle Housings	<u>151100</u>
--	---------------

This document was generated on Sep 18, 2024