



PRODUCT SPECIFICATION

COSMETIC SPECIFICATION

1.0 SCOPE

This applies to all TBO products.

2.0 PURPOSE

To define acceptability criteria for cosmetic issues

3.0 REFERENCE MATERIAL NUMBERS

This applies to all TBO products.

4.0 DEFINITIONS

Not applicable.

5.0 PROCEDURES

Color:

The use of color in the plastic component of connectors is for product identification only and not for aesthetic purposes. Lot-to-lot shade variations are acceptable and do not affect the form, fit, or function of the connectors. The specification only specifies the color, not the shade of the color. Color is considered a reference specification with no additional specific requirements.

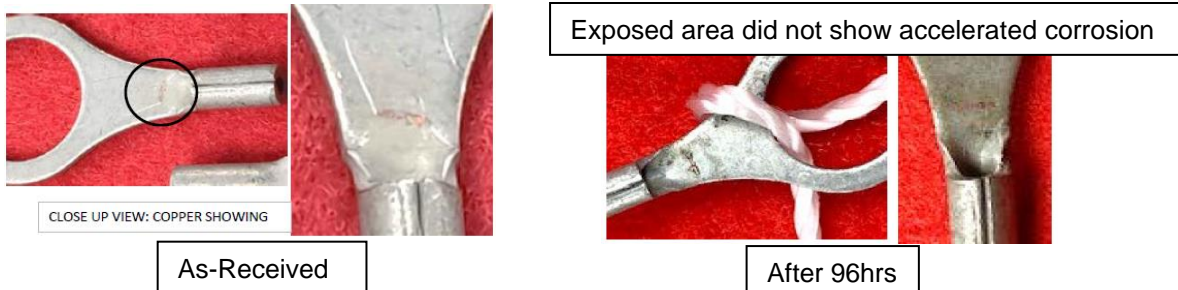
Plating Appearance:

Matte tin: Matte tin has a dull, non-reflective surface that varies in color from ash-white to mid-gray. Lot-to-lot shade variations are acceptable and do not affect the form, fit, or function of the connectors.

Matte tin is inherently soft and susceptible to handling damage that can cause superficial blemishes which are easily seen by the naked eye due to non-reflective surface. Superficial blemishes do not affect the form, fit, or function of the connectors.

Exposed copper up to 3% of the entire part is to be considered acceptable and does not affect the form, fit, or function of the connector.

- Example shown below for PN: B-118-38 Accelerated Salt-Spray Test (5% Mixture).



| | | | |
|---|--|--|--------------------------------|
| REVISION: B | ECR/ECN INFORMATION: EC No: 787758 DATE: 2024 / 5 / 29 | TITLE: COSMETIC SPECIFICATION TBO PRODUCTS | SHEET No. 1 of 2 |
| DOCUMENT NUMBER: PS-19902-011 | CREATED / REVISED BY: D MAJCHSZAK | CHECKED BY: E SMITH | APPROVED BY: E SMITH |



PRODUCT SPECIFICATION

Witness Marks:

Minor indentations in the material either from stamping or subsequent processing are permissible provided there is no exposed copper, and the part is still within dimensional tolerances. These marks or blemishes do not affect the form, fit, or function of the connectors.

Witness mark does not protrude beyond tongue diameter "W"



| | | | |
|---|--|--|--------------------------------|
| REVISION: B | ECR/ECN INFORMATION: EC No: 787758 DATE: 2024 / 5 / 29 | TITLE: COSMETIC SPECIFICATION TBO PRODUCTS | SHEET No. 2 of 2 |
| DOCUMENT NUMBER: PS-19902-011 | CREATED / REVISED BY: D MAJCHSZAK | CHECKED BY: E SMITH | APPROVED BY: E SMITH |