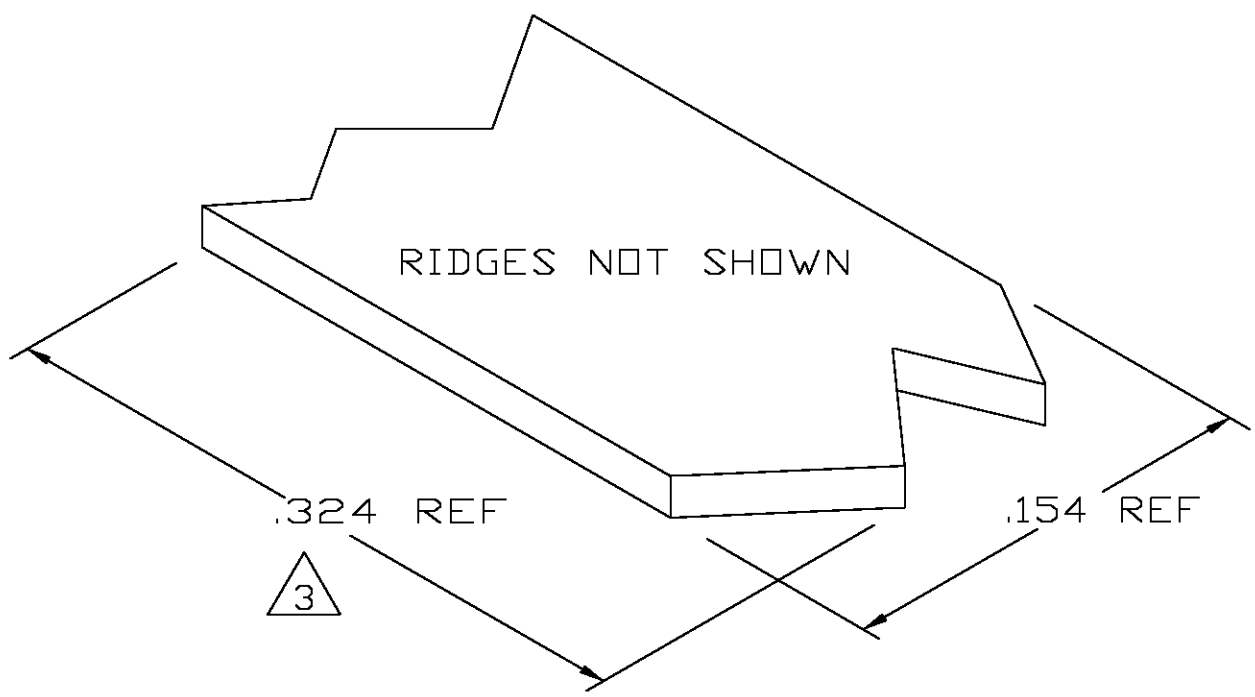
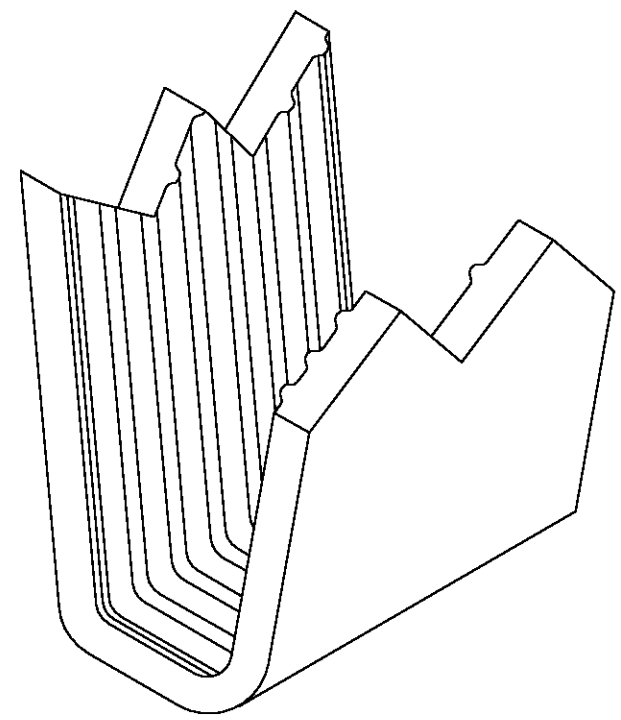
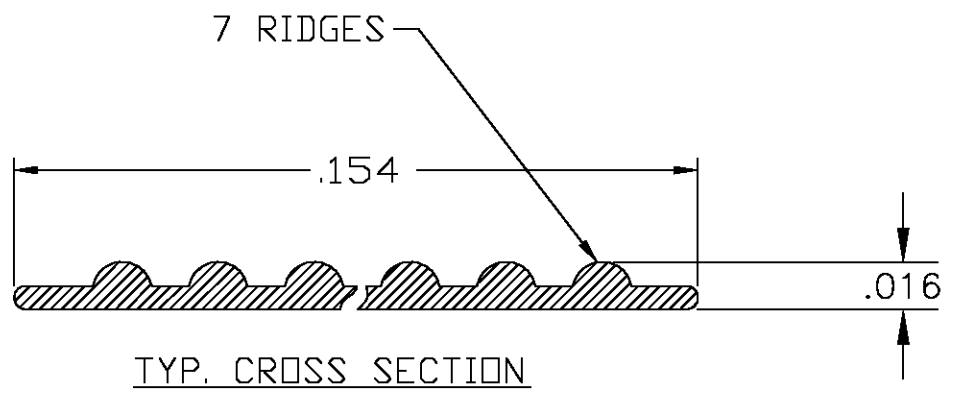


THIS DRAWING IS UNPUBLISHED. RELEASED FOR PUBLICATION
 © COPYRIGHT BY TYCO ELECTRONICS CORPORATION. ALL RIGHTS RESERVED.

| LOC | DIST | REVISIONS | | | |
|-----|------|-------------|----------|---------|----------|
| P | LTR | DESCRIPTION | DATE | DWN | APVD |
| | | 0 | PROPOSED | 18DEC03 | MF EH |



- 1 CRIMPBAND MATERIAL PROVIDED IN CONTINUOUS STRIP.
- 2 REFERENCE DESCRIPTIVE PART NUMBER L061/076D16TB.
- 3 BLANK LENGTH DETERMINED BY 061/076 TOOLSET.
- 4 PRELIMINARY - NOT FOR PRODUCTION.



PARTIAL FORMED VIEW (REF)
FORMED BY APPLICATION TOOLING

4 1601311-1
PART NUMBER

| | | | | |
|--|--|--------------------------------------|---|--------------------|
| THIS DRAWING IS A CONTROLLED DOCUMENT. | | DWN MICHAEL S. FEHER 18DEC2003 | Tyco Electronics Corporation Harrisburg, PA 17105-3608 | |
| DIMENSIONS: INCHES | | CHK EDWARD HOWARD 18DEC2003 | | |
| TOLERANCES UNLESS OTHERWISE SPECIFIED: | | APVD EDWARD HOWARD 18DEC2003 | NAME CRIMPBAND, RTM | |
| 0 PLC ± - 1 PLC ± - 2 PLC ± - 3 PLC ± .005 4 PLC ± - ANGLES ± - | | PRODUCT SPEC - | RESTRICTED TO - | |
| MATERIAL UNS C26000 BRASS | | FINISH TIN | WEIGHT - | SIZE A3 |
| | | CUSTOMER DRAWING | | CAGE CODE 00779 |
| | | DRAWING NO C-1601311 | | SCALE 1:1 |
| | | SHEET 1 OF 1 | | REV 0 |