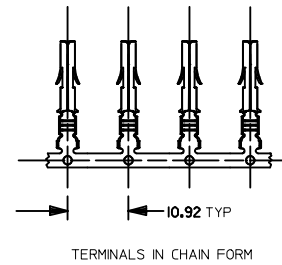
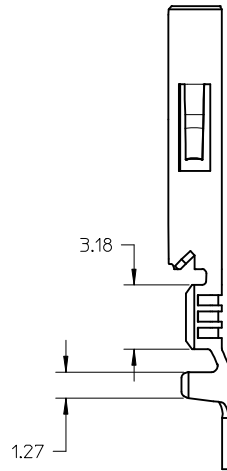
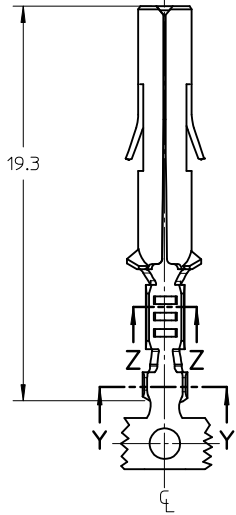


SECTION Z-Z
CONDUCTOR CRIMP AREA
SCALE 10:1

SECTION Y-Y
INSULATOR CRIMP AREA
SCALE 10:1



SOCKET TERMINAL

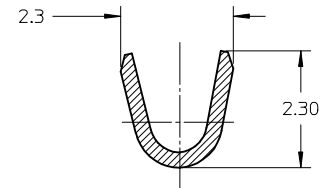
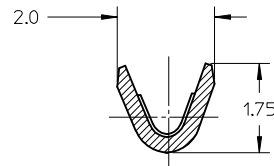
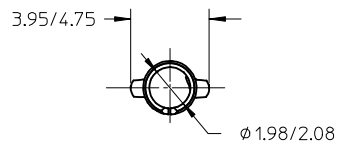


NOTES:

- SOCKET TERMINALS FOR USE WITH 2.13 DIA SERIES HOUSINGS:
PLUG(42021-**)
CAP (42022-**)
- SOCKET TERMINALS MATE WITH 42023 PIN TERMINALS 2.13 DIA SERIES
- TERMINALS FINISHED IN CHAIN FORM
- MATERIAL: 0.30 THICK STRIP:
A= BRASS, #C26000 PER SMES-124-E7
B= PHOSPHOR BRONZE, #C51000 PER SMES-124-E7
- FINISH:
HOT TIN DIP 20 m.l/0.51 microns MIN PER SDES-88-P901
- WIRE RANGE: 22-24AWG COVERS UL 1007 & UL1569
- PRODUCT SPECIFICATION: PS-42022-0001

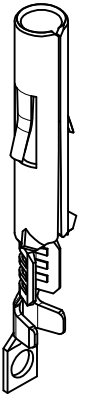
PART NO	FINISH	MATERIAL	WIRE SIZE	INSULATION DIA RANGE
42024-1019	ES-88-P901	C26000	22-24 AWG	1.2-1.8 MM
42024-1020	ES-88-P901	C51000	22-24 AWG	1.2-1.8 MM

NOTES UPDATED EC NO: 12014-0044 DRWN:SS06 CHKD: APPR: ISHWARG 2013/11/08 2013/12/02	QUALITY SYMBOLS	GENERAL TOLERANCES (UNLESS SPECIFIED)	DIMENSION STYLE MM ONLY	SCALE 4:1	DESIGN UNITS METRIC	THIRD ANGLE PROJECTION																																	
	$F_A=0$ $F_G=0$ $F_P=0$	<table border="1"> <thead> <tr> <th></th> <th>mm</th> <th>INCH</th> </tr> </thead> <tbody> <tr> <td>4 PLACES</td> <td>± ---</td> <td>± ---</td> </tr> <tr> <td>3 PLACES</td> <td>± ---</td> <td>± ---</td> </tr> <tr> <td>2 PLACES</td> <td>± 0.25</td> <td>± ---</td> </tr> <tr> <td>1 PLACE</td> <td>± 0.38</td> <td>± ---</td> </tr> <tr> <td>0 PLACE</td> <td>± ---</td> <td>± ---</td> </tr> </tbody> </table>		mm	INCH	4 PLACES	± ---	± ---	3 PLACES	± ---	± ---	2 PLACES	± 0.25	± ---	1 PLACE	± 0.38	± ---	0 PLACE	± ---	± ---	<table border="1"> <thead> <tr> <th>mm</th> <th>INCH</th> </tr> </thead> <tbody> <tr> <td>± 0.15</td> <td>± 0.006</td> </tr> <tr> <td>± 0.25</td> <td>± 0.010</td> </tr> <tr> <td>± 0.38</td> <td>± 0.015</td> </tr> <tr> <td>± 0.51</td> <td>± 0.020</td> </tr> <tr> <td>± 0.76</td> <td>± 0.030</td> </tr> <tr> <td>± 1.27</td> <td>± 0.050</td> </tr> </tbody> </table>	mm	INCH	± 0.15	± 0.006	± 0.25	± 0.010	± 0.38	± 0.015	± 0.51	± 0.020	± 0.76	± 0.030	± 1.27	± 0.050	DRAWN BY: SS06 DATE: 2013/10/29 CHECKED BY: DATE: APPROVED BY: ISHWARG DATE: 2013/11/06 MATERIAL NO.: SEE TABLE	TITLE MLX TERMINAL SOCKET, 22-24AWG, 2.13 DIA SERIES		DOCUMENT NO. SD-42024-002 SHEET NO. 1 OF 1
		mm	INCH																																				
	4 PLACES	± ---	± ---																																				
3 PLACES	± ---	± ---																																					
2 PLACES	± 0.25	± ---																																					
1 PLACE	± 0.38	± ---																																					
0 PLACE	± ---	± ---																																					
mm	INCH																																						
± 0.15	± 0.006																																						
± 0.25	± 0.010																																						
± 0.38	± 0.015																																						
± 0.51	± 0.020																																						
± 0.76	± 0.030																																						
± 1.27	± 0.050																																						
DRAFT WHERE APPLICABLE MUST REMAIN WITHIN DIMENSIONS		ANGULAR ± 1 °	SIZE A3	THIS DRAWING CONTAINS INFORMATION THAT IS PROPRIETARY TO MOLEX INCORPORATED AND SHOULD NOT BE USED WITHOUT WRITTEN PERMISSION																																			

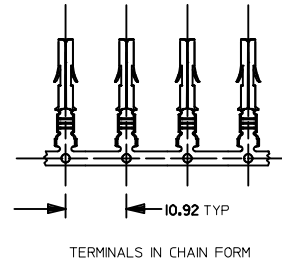
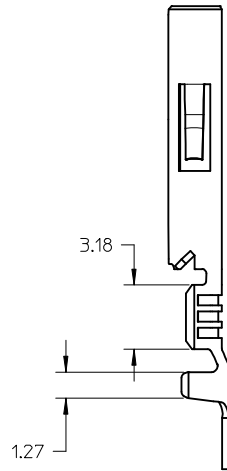
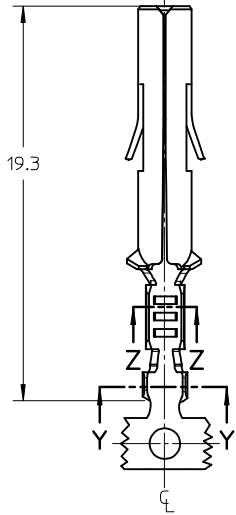


SECTION Z-Z
CONDUCTOR CRIMP AREA
SCALE 10:1

SECTION Y-Y
INSULATOR CRIMP AREA
SCALE 10:1



SOCKET TERMINAL



NOTES:

- SOCKET TERMINALS FOR USE WITH 2.13 DIA SERIES HOUSINGS:
PLUG(42021-**)
CAP (42022-**)
- SOCKET TERMINALS MATE WITH 42023 PIN TERMINALS 2.13 DIA SERIES
- TERMINALS FINISHED IN CHAIN FORM
- MATERIAL: 0.30 THICK STRIP:
A= BRASS, #C26000 PER SMES-124-E7
B= PHOSPHOR BRONZE, #C51000 PER SMES-124-E7
- FINISH:
HOT TIN DIP 20 m.l/0.51 microns MIN PER SDES-88-P901
- WIRE RANGE: 22-24AWG COVERS UL 1007 & UL1569
- PRODUCT SPECIFICATION: PS-42022-0001

PART NO	FINISH	MATERIAL	WIRE SIZE	INSULATION DIA RANGE
42024-1019	ES-88-P901	C26000	22-24 AWG	1.2-1.8 MM
42024-1020	ES-88-P901	C51000	22-24 AWG	1.2-1.8 MM

NOTES UPDATED EC NO: 12014-0044 DRWN:SS06 CHKD: APPR: ISHWARG 2	2013/11/08 2013/12/02	DESCRIPTION REV	QUALITY SYMBOLS	GENERAL TOLERANCES (UNLESS SPECIFIED)	DIMENSION STYLE	SCALE	DESIGN UNITS	THIRD ANGLE PROJECTION	
			$F_A=0$ $F_G=0$ $F_P=0$	mm INCH 4 PLACES ± --- ± --- 3 PLACES ± --- ± --- 2 PLACES ± 0.25 ± --- 1 PLACE ± 0.38 ± --- 0 PLACE ± --- ± ---	MM ONLY	4:1	METRIC	DRAWN BY: SS06 DATE: 2013/10/29 CHECKED BY: DATE:	TITLE MLX TERMINAL SOCKET, 22-24AWG, 2.13 DIA SERIES
			ANGULAR ± 1 ° DRAFT WHERE APPLICABLE MUST REMAIN WITHIN DIMENSIONS	APPROVED BY: ISHWARG DATE: 2013/11/06 MATERIAL NO. SEE TABLE	DOCUMENT NO. SD-42024-002	SHEET NO. 1 OF 1			
			THIS DRAWING CONTAINS INFORMATION THAT IS PROPRIETARY TO MOLEX INCORPORATED AND SHOULD NOT BE USED WITHOUT WRITTEN PERMISSION						