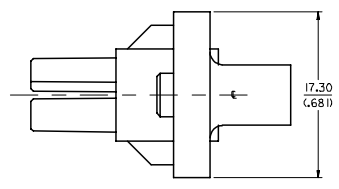
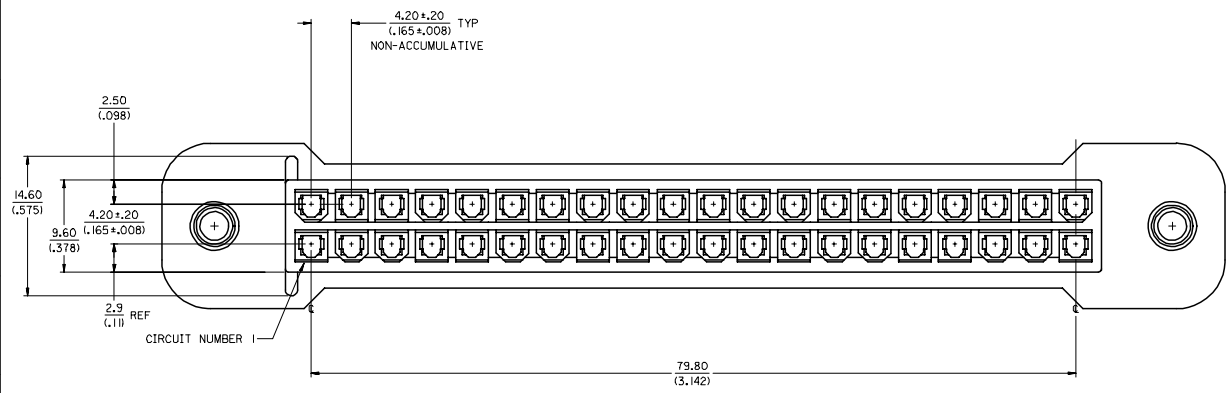


20 19 18 17 16 15 14 13 12 11 10 9 8 7 6 5 4 3 2 1

M L K J I H G F E D C B A



- NOTES:**
1. MATERIAL:  
NYLON 46, GLASS-FILLED, UL94V-0,  
COLOR - BLACK
  2. FINISH NONE
  3. PRODUCT SPECIFICATION: PS-43759-0001
  4. PART IS FOR USE WITH 5556, 44476 AND 45750 SERIES TERMINALS.
  5. THIS CONNECTOR ALLOWS FOR .050/(1.27) MAX. MISALIGNMENT IN ANY DIRECTION.
  6. A MAXIMUM TOLERANCE OF .050/(1.27) ALLOWS FOR 2 POINTS OF ELECTRICAL CONTACT. A MAXIMUM TOLERANCE OF .020/(.51) ALLOWS FOR 4 POINTS OF CONTACT.
  7. PART MATES WITH MINI-FIT B.M.I. HEADER #43973.
  8. CONNECTOR ASSEMBLIES ARE NOT TO BE MATED OR UNMATED WHILE CIRCUITS ARE LIVE.
  9. PART SHOULD BE PUNCHED IN THE DIRECTION OF CONNECTOR INSERTION.
  10. PART BOW SPECIFICATION MEASURED AT DATUM [-A-] = .15/(.006) PER INCH MAXIMUM. BOW DIRECTION DEFINED BY FIGURE 1.

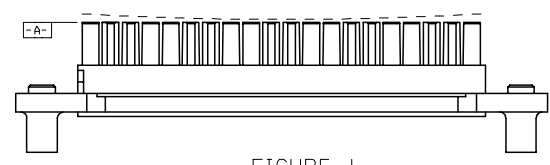
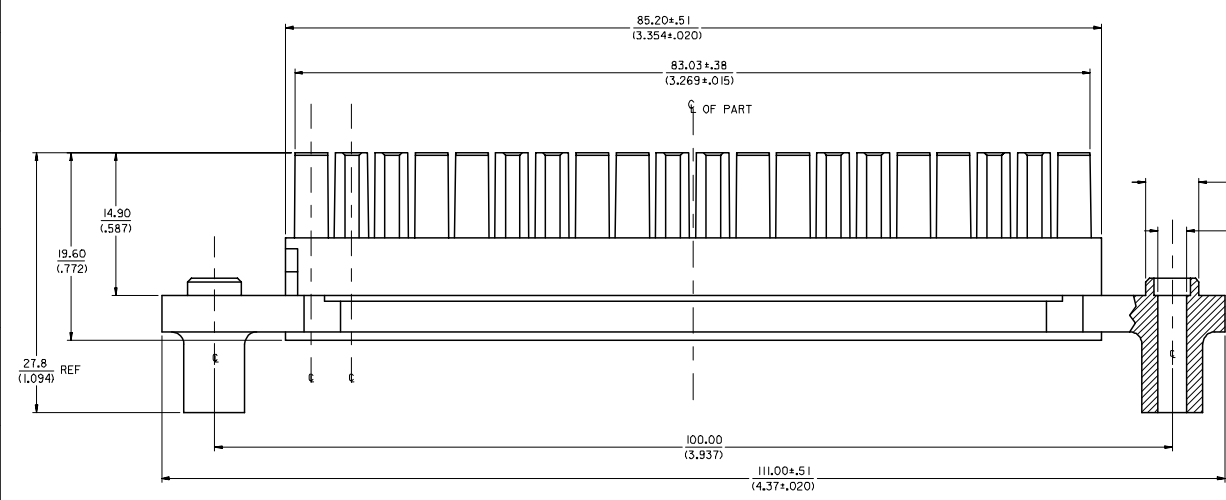


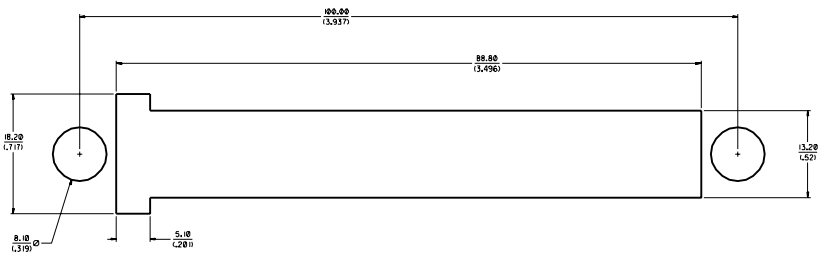
FIGURE 1

2	A
1	A4
SHEET REV	

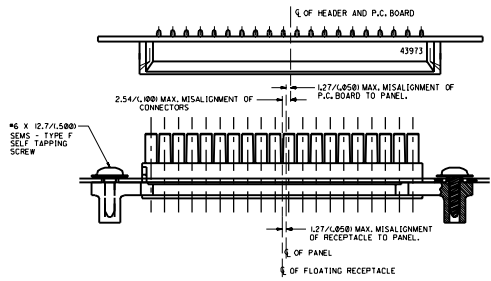
<b>REV NOTES 3 &amp; 4</b> EC NO: UCP2006-2160 DRAWN: ADMANIL 2006/03/28 CHKD: BOPULAR 2006/03/22 APPR: JCOMERCI 2006/03/23	QUALITY SYMBOLS	GENERAL TOLERANCES (UNLESS SPECIFIED)	DIMENSION STYLE	SCALE	DESIGN UNITS	THIRD ANGLE PROJECTION																		
	$\nabla=0$ $\nabla=0$	<table border="1"> <tr> <th></th> <th>mm</th> <th>INCH</th> </tr> <tr> <td>4 PLACES</td> <td>± .15</td> <td>± .005</td> </tr> <tr> <td>3 PLACES</td> <td>± .10</td> <td>± .004</td> </tr> <tr> <td>2 PLACES</td> <td>± 0.38</td> <td>± .015</td> </tr> <tr> <td>1 PLACE</td> <td>± .50</td> <td>± .020</td> </tr> <tr> <td colspan="3">ANGULAR ± 1/2°</td> </tr> </table>		mm	INCH	4 PLACES	± .15	± .005	3 PLACES	± .10	± .004	2 PLACES	± 0.38	± .015	1 PLACE	± .50	± .020	ANGULAR ± 1/2°			MM/IN	4:1	METRIC	
		mm	INCH																					
	4 PLACES	± .15	± .005																					
3 PLACES	± .10	± .004																						
2 PLACES	± 0.38	± .015																						
1 PLACE	± .50	± .020																						
ANGULAR ± 1/2°																								
DESCRIPTION	DRAFT WHERE APPLICABLE MUST REMAIN WITHIN DIMENSIONS	MATERIAL NO. 439740002	DRAWN BY PEARSON	DATE 1998/01/14	TITLE <b>PANEL MOUNT RECEPTACLE          40 CKT BLIND MATE          MINI-FIT SERIES</b>																			
REV			CHECKED BY MUELLER	DATE 1998/01/14	<b>MOLEX INCORPORATED</b>																			
			APPROVED BY EDGLEY	DATE 1998/01/14	DOCUMENT NO. SD-43974-002																			
			SIZE D THIS DRAWING CONTAINS INFORMATION THAT IS PROPRIETARY TO MOLEX INCORPORATED AND SHOULD NOT BE USED WITHOUT WRITTEN PERMISSION		SHEET NO. 1 OF 2																			

19 18 17 16 15 14 13 12 11 10 9 8 7 6 5 4 3 2 1

19 18 17 16 15 14 13 12 11 10 9 8 7 6 5 4 3 2 1



RECOMMENDED PANEL CUT-OUT FOR 1.27/0.38/0.650 (+.012) THICK PANEL  
(SEE NOTE 9)



ALIGNMENT TOLERANCES FOR 1.27(0.050) MAX. BOARD-TO-PANEL MISALIGNMENT  
IN 1.27(0.050) RECEPTACLE FLOAT

SEE SHEET 1 FOR: NO. OF CHN APPLS.	QUALITY SYMBOLS	GENERAL TOLERANCES UNLESS SPECIFIED	SCALE: 2:1	DESIGN UNITS: DIMENSIONS IN INCH	THIRD ANGLE PROJECTION	TITLE: PANEL-MOUNT RECEPTACLE 40-CIRCUIT BLIND MATE MINI-FIT SERIES	DRAWING NO. SD-43974-002	SHEET NO. 2
	CRITICAL	4 PLACES ±0.15 3 PLACES ±0.38 2 PLACES ±0.38 1 PLACE ±0.38	ANGULAR: 1/2°	DRAWN BY & DATE: PEARSON 01/13/98 CHECKED BY & DATE: MUELLER 01/15/98 APPROVED BY & DATE: EDGLEY 01/13/98	MATERIAL NO. 439740002	MATERIAL NO. SD-43974-002	SIZE: D	
REV	REVISIONS	DRAFT WHEN APPLICABLE MUST REMAIN WITHIN DIMENSIONS	THIS DRAWING CONTAINS INFORMATION THAT IS PROPRIETARY TO MOLEX INCORPORATED AND SHOULD NOT BE USED WITHOUT WRITTEN PERMISSION.					