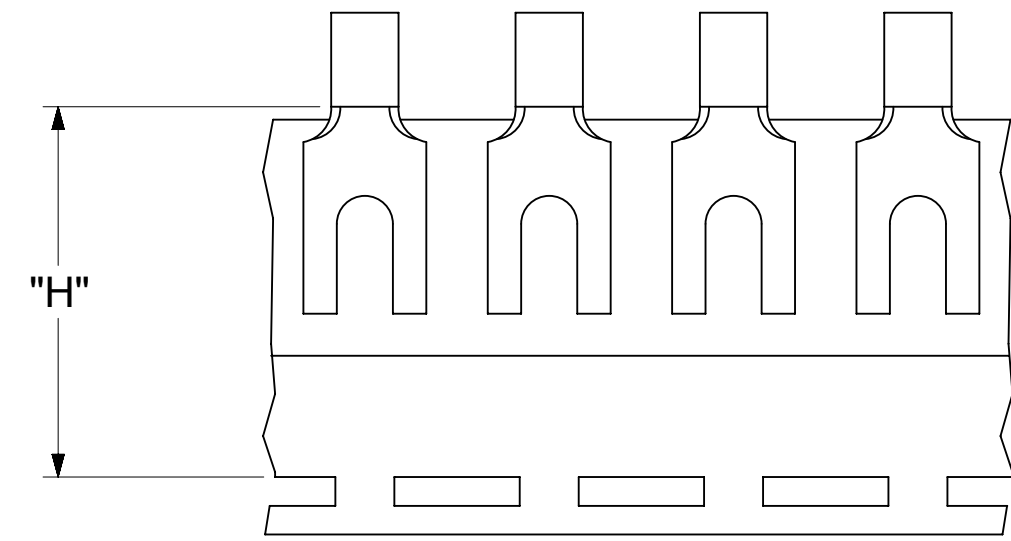
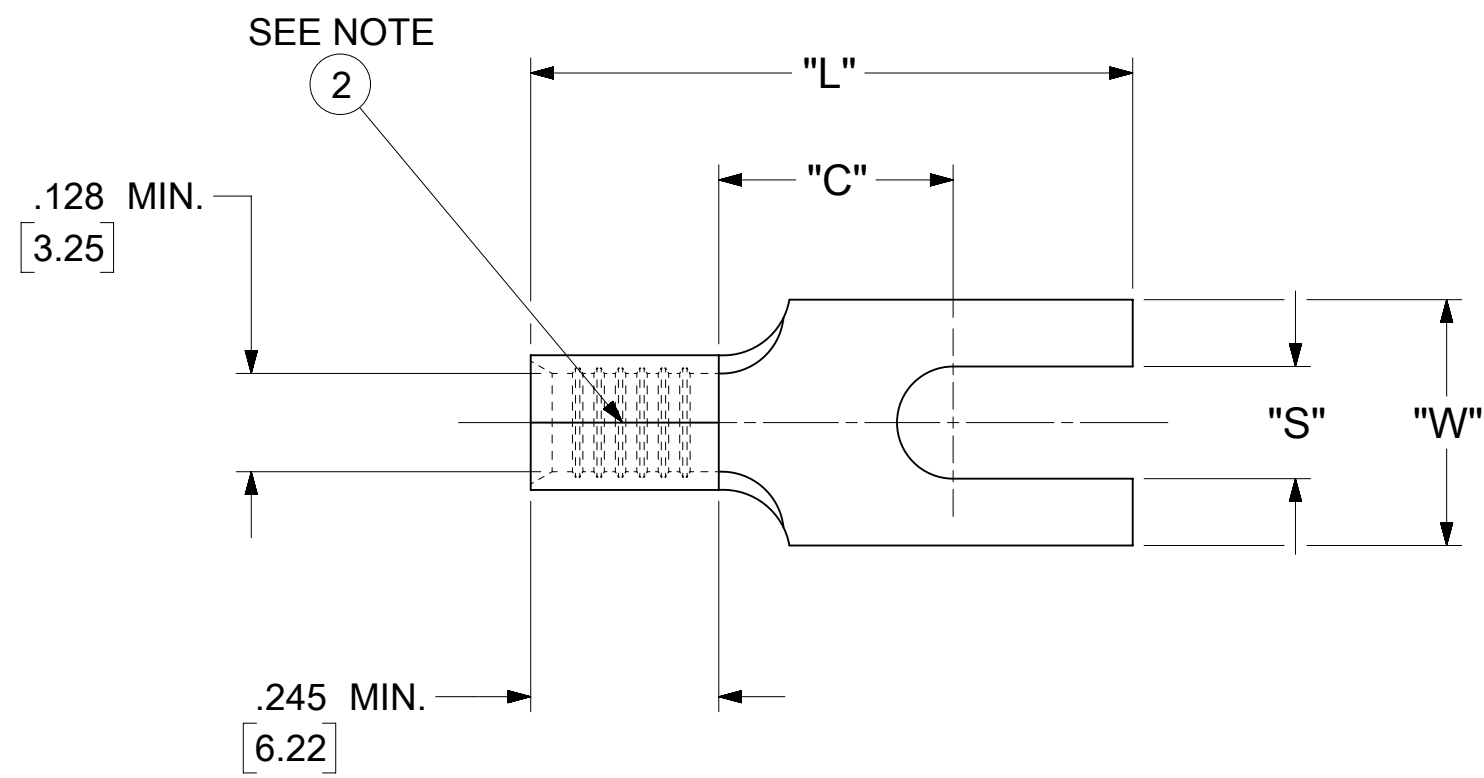


LOOSE PIECE		TAPE MOUNTED		SPECIFICATIONS					
MATERIAL NUMBER	ENGINEERING NUMBER	MATERIAL NUMBER	ENGINEERING NUMBER	STUD SIZE	"S" ±.005 [0.13]	"W" ±.010 [0.25]	"C" MIN.	"L" MAX.	"H"
191290008	C-1105-06	191410080	C-1105-06T	6	.146 [3.71]	.320 [8.13]	.305 [7.75]	.784 [191.91]	.980 [24.89]
191290007	C-1105-08	---	---	8	.173 [4.39]				
191290005	C-1105-10	---	---	10	.198 [5.03]				



PARTS ON TAPE

NOTES:

- MATERIAL: COPPER (.040±.001 [1.02] THK.)
PLATING: ELECTRO-TIN (.0003 MIN).
- BRAZED SEAM
- WIRE SIZE: 12-10 AWG
4.0-6.0 MM²
- "UL" LISTING #E32244
"CSA" LISTING #18689
- ALL DIMENSIONS IN INCHES/[MM].
- PARTS ARE ROHS COMPLIANT.
- DIMS. SHOWN ARE FOR REFERENCE ONLY.

SYMBOLS	THIS DRAWING CONTAINS INFORMATION THAT IS PROPRIETARY TO MOLEX ELECTRONIC TECHNOLOGIES, LLC AND SHOULD NOT BE USED WITHOUT WRITTEN PERMISSION								
	DIMENSION UNITS	SCALE		CURRENT REV DESC: MIGRATION TO ECTR/NX					
∇ = 0	INCH/MM	NTS		molex SPADE TONGUE TERMINAL KRIMPTITE 100-SERIES PRODUCT CUSTOMER DRAWING					
∇ = 0	GENERAL TOLERANCES (UNLESS SPECIFIED)								
∇ = 0		MM	INCH						
∇ = 0	4 PLACES	±	±						
∇ = 0	3 PLACES	±	± 0.005	EC NO: 621658	DRWN: ABENJAMINLW	2019/07/26			
∇ = 0	2 PLACES	± 0.13	± 0.01	CHK'D: GROJAS01	2019/07/31				
∇ = 0	1 PLACE	± 0.25	±	APPR: JMACNEIL	2019/08/05				
∇ = 0	0 PLACES	±	±	INITIAL REVISION:					
∇ = 0	ANGULAR TOL	± 0.5 °		DRWN: JJ	1984/10/16				
∇ = 0	DRAFT WHERE APPLICABLE MUST REMAIN WITHIN DIMENSIONS			THIRD ANGLE PROJECTION	DRAWING	SERIES			
∇ = 0				C-SIZE	19129				
DOCUMENT STATUS		P1	RELEASE DATE	2019/08/05	20:29:02	DOCUMENT NUMBER	DOC TYPE	DOC PART	REVISION
12		11	10	9	8	191290008	PSD	000	A
						SEE TABLE	GENERAL MARKET		1 OF 1

NOTES:

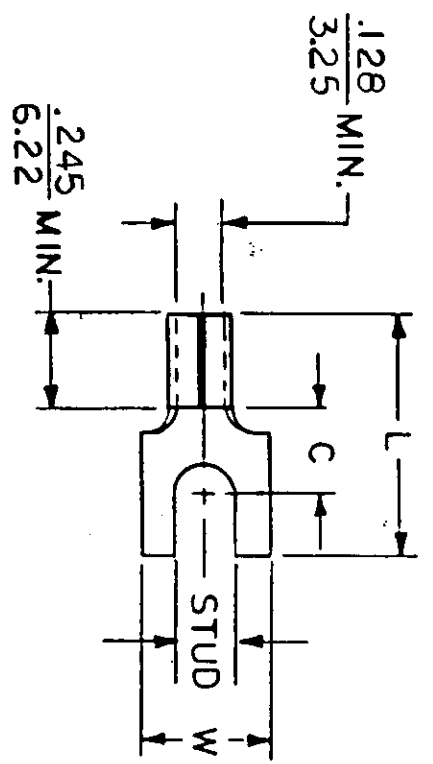
① MAT'L: COPPER (STOCK TKN. $\frac{.040}{1.02}$)
 PLATING: ELECTRO-TIN (.0003 MIN.)

STUD SIZES: ($\pm .005$)

- 02 = .094
- 04 = .119
- 06 = .146
- 08 = .173
- 10 = .198
- 14 = .265
- 56 = .328
- 38 = .390

"UL" LISTING # E32244
 "CSA" LISTING # 18689

ALL DIMENSIONS = $\frac{\text{INCHES}}{\text{MM}}$



FILE NO. C-CD-103-01

WIRE SIZE: 12-10 AWG
 40-60 MM²

PART NUMBER	"W" ±.010	"C" MIN.	"L" MAX.	REFERENCE	SCALE:	NTS	DATE	TITLE:	DIMENSIONAL TOLERANCES UNLESS OTHERWISE SPECIFIED	
									DEC.	ANG.
C-1102-	.415 10.41	.305 7.75	.784 19.91		DRWN. BY: JJ		10-16-84	SPADE TONGUE TERMINAL KRIPTITE 100-SERIES	±	±
C-1105-	.320 8.13	.305 7.75	.784 19.91		CHKD. BY: GZ		10-23-84		DWG. NO. A	CUSTOMER DWG.

