

10

9

8

7

6

5

4

3

2

106123

ADAPTER

ADAPTER

P/N

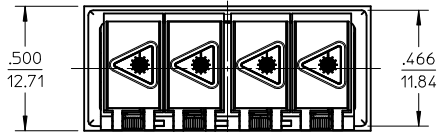
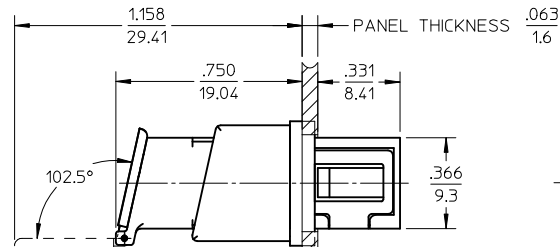
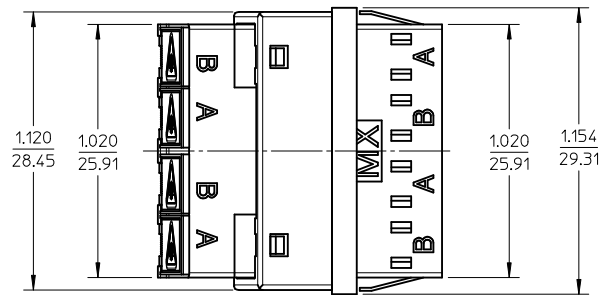
P/N

106123-0500

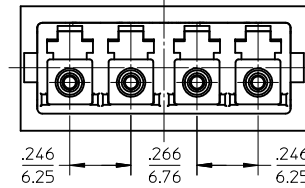
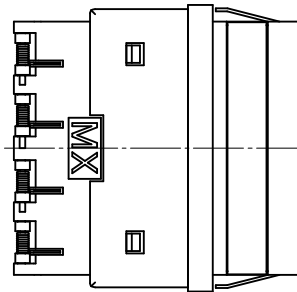
FABRIC OVER FOAM

106123-0530

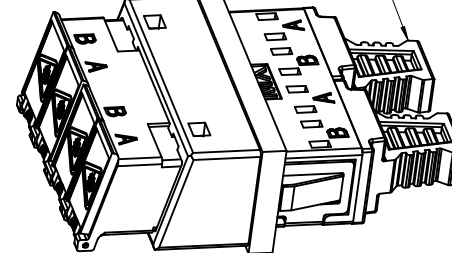
SOLID



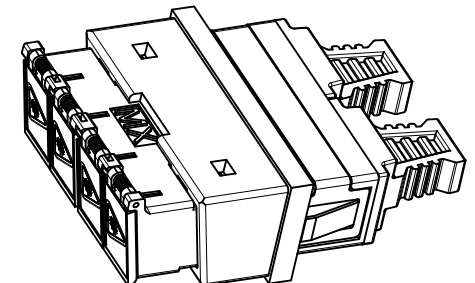
COMPRESSED  
EMI GASKET .049  
1.24



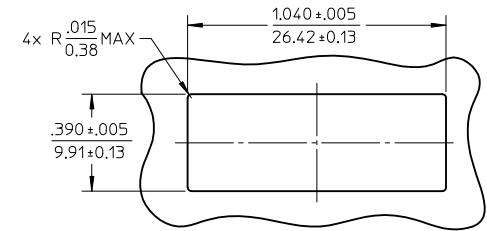
EMI GASKET  
DUST CAP  
2 PIECES



ISO VIEW 1



ISO VIEW 2



RECOMMENDED  
MOUNTING PATTERN

## NOTES:

1. ALL DIMENSIONS ARE FOR REFERENCE.
2. TWO DUST CAPS SHOWN IN ISOMETRIC VIEW ONLY.
3. LC EMI QUAD ADAPTER HAS SC DUPLEX ADAPTER FOOTPRINT.

ENTER DESCRIPTION	2010/02/05
EC NO: MF2010-0345	2010/02/09
IDRW:KPEVZNER	2010/02/11
CHKD:	
APPR: IGUMIN	
REV	DESCRIPTION
C	

QUALITY SYMBOLS	▽=0
	▽=0

GENERAL TOLERANCES (UNLESS SPECIFIED)	
4 PLACES	± --- ± ---
3 PLACES	± --- ± ---
2 PLACES	± --- ± ---
1 PLACE	± --- ± ---
ANGULAR	± --- °
DRAFT WHERE APPLICABLE MUST REMAIN WITHIN DIMENSIONS	

DIMENSION STYLE	IN/MM
DRAWN BY	DATE
PGIBLIN	2005/11/21
CHECKED BY	DATE
APPROVED BY	DATE
IGUMIN	2010/02/09
MATERIAL NO.	
SEE TABLE	

SCALE	2:1
DESIGN UNITS	INCH
THIRD ANGLE PROJECTION	
TITLE	
LC EMI QUAD ADAPTER SNAP MOUNT	
MOLEX INCORPORATED	
DOCUMENT NO.	SD-106123-0500
SHEET NO.	1 OF 1

THIS DRAWING CONTAINS INFORMATION THAT IS PROPRIETARY TO MOLEX INCORPORATED AND SHOULD NOT BE USED WITHOUT WRITTEN PERMISSION	
---	--

9

8

7

6

5

4

3

2

1