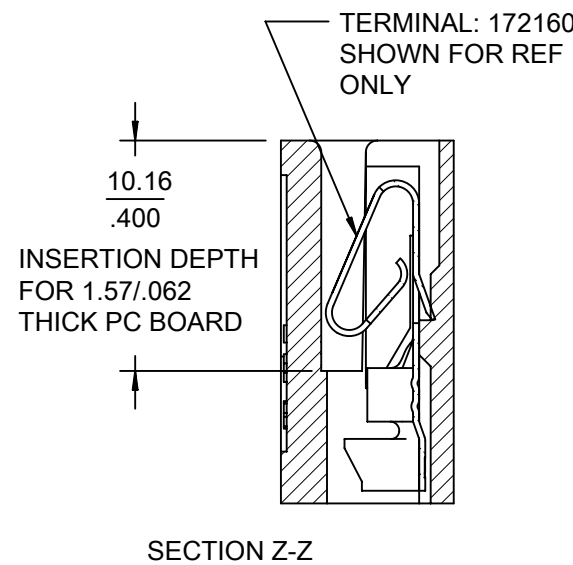
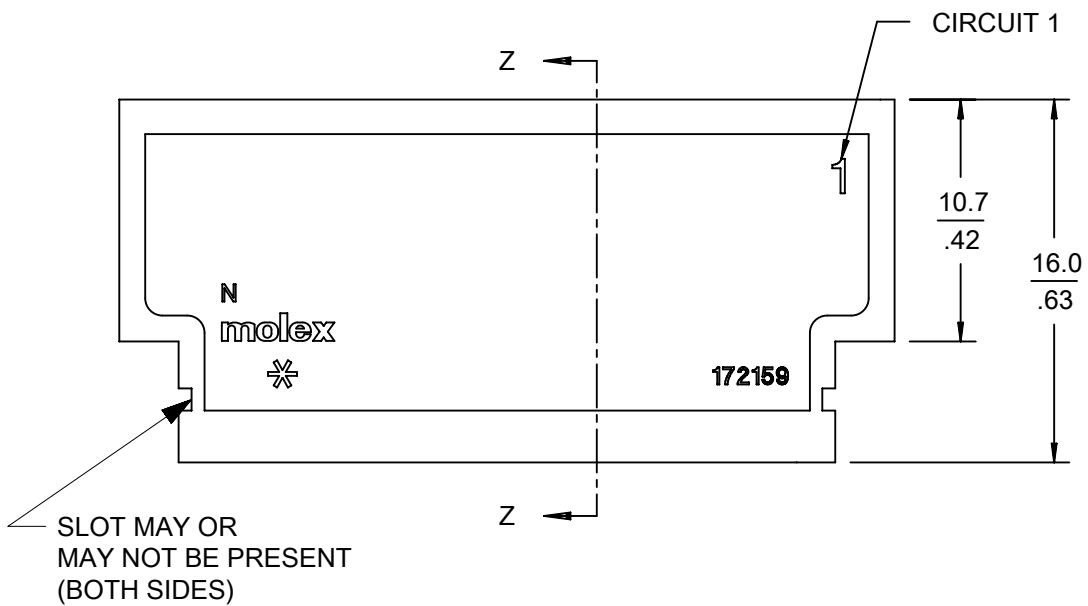
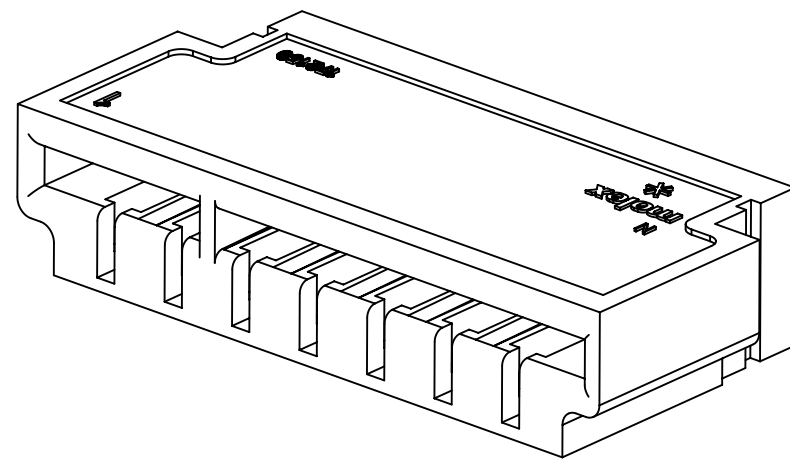


- NOTES:
1. MATERIAL: NYLON 6, 94V-2, GLOW WIRE CAPABLE PER IEC 60335-1, COLOR: BLACK
 2. FINISH: N/A
 3. PRODUCT SPECIFICATION: PS-172160-0001
 4. PACKAGING SPECIFICATION: PK-172159-0001
 5. COSMETIC SPECIFICATION: PS-45499-002 CLASS B
 6. HOUSING ACCEPTS TERMINAL: 172160
 7. DIMENSION TO BE 2.54-2.79 / .100-.110 TO POLARIZE HOUSING AND PCB.



CKTS	MATERIAL NO	POL RIB	DIM A	DIM B	DIM C	DIM E
03	172879-0003	N/A	$\frac{15.71}{.619}$	$\frac{20.24}{.797}$	$\frac{16.07}{.633}$	$\frac{7.92}{.312}$
04	172879-0004	N/A	$\frac{19.71}{.776}$	$\frac{22.30}{.878}$	$\frac{20.06}{.790}$	$\frac{11.89}{.468}$
05	172879-0205	2-3	$\frac{23.50}{.925}$	$\frac{26.26}{1.034}$	$\frac{24.06}{.947}$	$\frac{15.85}{.624}$
06	172879-0206	2-3	$\frac{27.49}{1.082}$	$\frac{30.23}{1.190}$	$\frac{28.05}{1.104}$	$\frac{19.81}{.780}$
07	172879-0207	2-3	$\frac{31.43}{1.238}$	$\frac{34.19}{1.346}$	$\frac{32.04}{1.262}$	$\frac{23.77}{.936}$
08	172879-0208	3-4	$\frac{35.43}{1.395}$	$\frac{38.15}{1.502}$	$\frac{36.03}{1.419}$	$\frac{27.74}{1.092}$
09	172879-0209	3-4, 7-8	$\frac{39.42}{1.552}$	$\frac{42.11}{1.658}$	$\frac{40.03}{1.576}$	$\frac{31.70}{1.248}$
10	172879-0210	3-4, 6-7	$\frac{43.41}{1.709}$	$\frac{46.08}{1.814}$	$\frac{44.02}{1.733}$	$\frac{35.66}{1.404}$
11	172879-0211	3-4, 7-8	$\frac{47.35}{1.864}$	$\frac{50.04}{1.970}$	$\frac{48.01}{1.890}$	$\frac{39.62}{1.560}$
12	172879-0212	3-4, 8-9	$\frac{51.35}{2.022}$	$\frac{54.00}{2.126}$	$\frac{52.01}{2.048}$	$\frac{43.59}{1.716}$



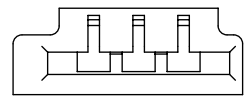
THIS DRAWING CONTAINS INFORMATION THAT IS PROPRIETARY TO MOLEX ELECTRONIC TECHNOLOGIES, LLC AND SHOULD NOT BE USED WITHOUT WRITTEN PERMISSION

QUALITY SYMBOLS ▽ = 0 ▽ = 0 ▽ = 0 ▼ = 0 ▽ = 0 ⊠ = 0 ■ = 0 ▽ = 0	ADD SLOT NOTE EC NO: 101899 DRWN: MKIPPER CHK'D: FSMITH APPR: FSMITH	GENERAL TOLERANCES (UNLESS SPECIFIED) ANGULAR TOL ± ° 4 PLACES ± 3 PLACES ± 2 PLACES ± 0.25 1 PLACE ± 0.38 0 PLACES ± DRAFT WHERE APPLICABLE MUST REMAIN WITHIN DIMENSIONS	DIMENSION UNITS	SCALE	
			MM/IN	3:1	
			DRWN BY	DATE	
			MKIPPER	2015/02/10	
CHK'D BY	DATE	EGDEMATE 3.96/.156 GLOW WIRE HOUSING WITHOUT HOOKS			
JBELL	2015/02/10				
APPR BY	DATE	PRODUCT CUSTOMER DRAWING			
FSMITH	2015/06/15				
DRAWING SIZE	THIRD ANGLE PROJECTION	SERIES	MATERIAL NUMBER	CUSTOMER	
B		172879	SEE CHART	GENERAL MARKET	
		DOCUMENT NUMBER	DOC TYPE	DOC PART	SHEET NUMBER
		SD-172879-0000	PSD	000	1 OF 2

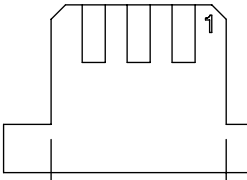
MODEL: TM-172159-0000

RELEASE STATUS P1 RELEASE DATE 2016/02/05 22:23:33

172879-0003



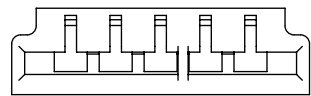
3 2 1 CIRCUITS



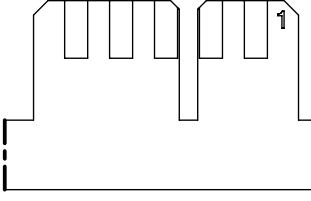
4.19
.165
MIN. THIS SIDE
ONLY ON 3 CKT

2.79
.110
MAX.
3 CKT ONLY
SEE NOTE 7

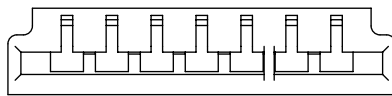
172879-0205



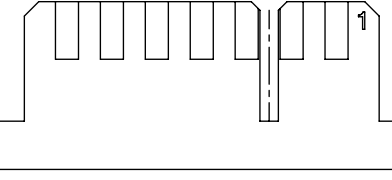
5 4 3 2 1 CIRCUITS



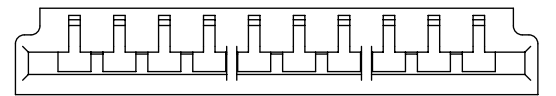
172879-0207



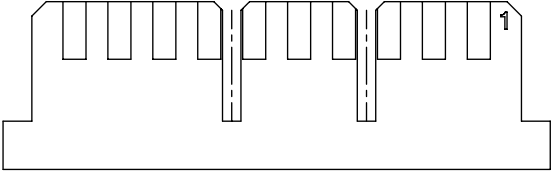
7 6 5 4 3 2 1 CIRCUITS



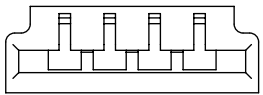
172879-0210



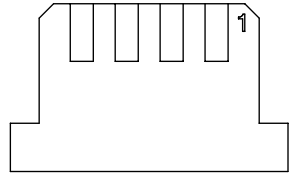
10 9 8 7 6 5 4 3 2 1 CIRCUITS



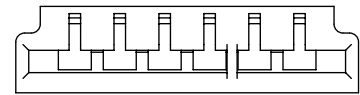
172879-0004



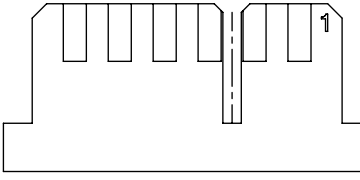
4 3 2 1 CIRCUITS



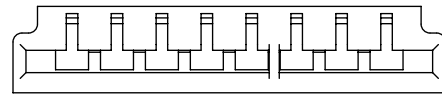
172879-0206



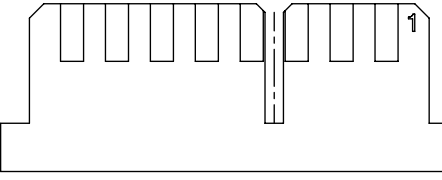
6 5 4 3 2 1 CIRCUITS



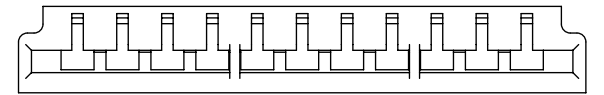
172879-0208



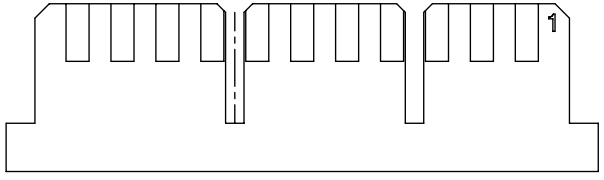
8 7 6 5 4 3 2 1 CIRCUITS



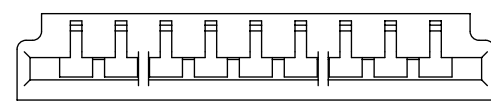
172879-0211



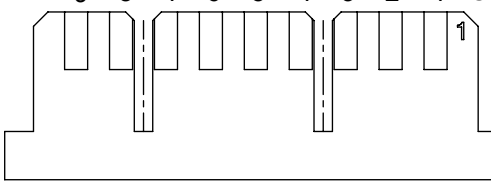
11 10 9 8 7 6 5 4 3 2 1 CIRCUITS



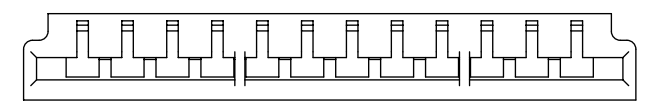
172879-0209



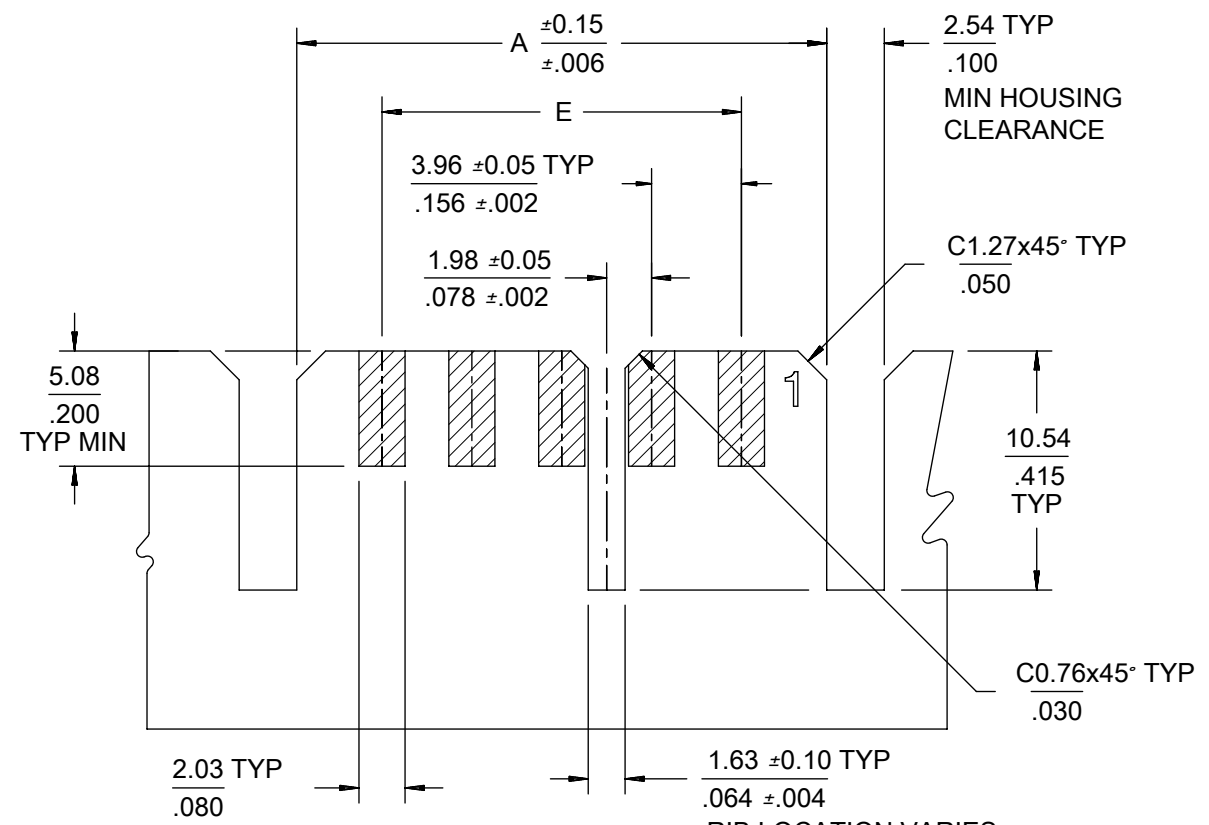
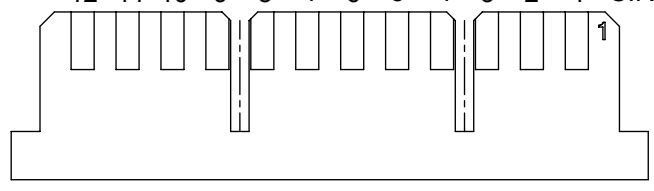
9 8 7 6 5 4 3 2 1 CIRCUITS



172879-0212



12 11 10 9 8 7 6 5 4 3 2 1 CIRCUITS



GENERIC PCB LAYOUT
PCB THICKNESS: 1.57/.062

RIB LOCATION VARIES
BY CKT SIZE SEE
CHART FOR LOCATION

THIS DRAWING CONTAINS INFORMATION THAT IS PROPRIETARY TO MOLEX ELECTRONIC TECHNOLOGIES, LLC AND SHOULD NOT BE USED WITHOUT WRITTEN PERMISSION

QUALITY SYMBOLS	ADD SLOT NOTE EC NO: 101899 DRWN: MKIPPER CHK'D: FSMITH APPR: FSMITH	GENERAL TOLERANCES (UNLESS SPECIFIED)	DIMENSION UNITS	SCALE	 EGDEMATE 3.96/.156 GLOW WIRE HOUSING WITHOUT HOOKS PRODUCT CUSTOMER DRAWING
		ANGULAR TOL ±	MM/IN	1.5:1	
4 PLACES ±	DRWN BY	DATE			
3 PLACES ±	MKIPPER	2015/02/10			
2 PLACES ± 0.25	CHK'D BY	DATE			
1 PLACE ± 0.38	JBELL	2015/02/10			
0 PLACES ±	APPR BY	DATE			
	FSMITH	2015/06/15			
	DRAFT WHERE APPLICABLE MUST REMAIN WITHIN DIMENSIONS	DRAWING SIZE	THIRD ANGLE PROJECTION		
		B			

SERIES	MATERIAL NUMBER	CUSTOMER
172879	SEE CHART	GENERAL MARKET
DOCUMENT NUMBER	DOC TYPE	DOC PART
SD-172879-0000	PSD	000
SHEET NUMBER		
2 OF 2		