

NOTES:

UL Standard

1. Rated voltage/current : 300V / 20A
3. Torque value : M2.5 , 3.5Lb.in
4. Wire range : 30~12AWG

IEC Standard

1. Rated voltage/current : 250V / 24A
2. Torque value : M2.5 , 0.4N.m
3. Wire range : 0.5~2.5mm<sup>2</sup>

NOTES2:

1. Dimension shall be interpreted per ASME Y14.5-2009
2. Pitch : 5.00mm, Poles : N=01~24P
3. Stripping length : 12~13mm
4. Withstanding voltage : AC2000V/1Min
5. Operating temperature : -40°C~+105°C
6. Undimensioned tolerances:

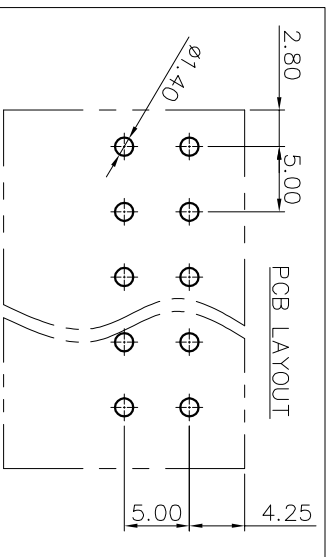
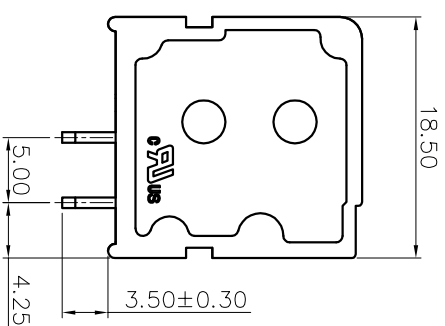
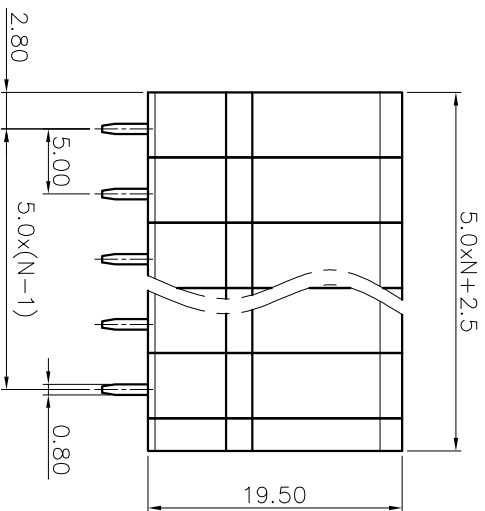
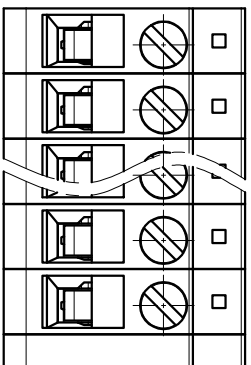
Pitch range in mm	Nominal dimension range in mm		Tolerance
	Over	Under	
6 TO 10	10 TO 30	60 TO 100	0.1/10
10 TO 24	30 TO 60	100 TO 150	<
			±2°

7. RoHS Compliance

# Ordering Information

JL105V-500 XX G 0 1

- Pitch 500=5.0PH
- No. of pins 2P~24P
- Housing Color B=Black G=Green U=Blue R=Red W=White Y=Yellow D=Orange E=Grey
- Packing 0=Pe bag T=Tube A=Tray



REVISION RECORD				
REV	ECN	DESCRIPTION	DRFT	DATE
A0		NEW		21.08.16

DRAW	SHUANGPING ZHENG		SCALE	FIT	PART NO.	TITLE:
	UNIT	mm	A4	1/1		
CHECK	LICHAD LIU		SIZE	A4	JL105V-500XXG01	JL105V-5.0-XXP 螺钉式直脚绿色
APPROVE	YONGLIANG GAO		SHEET	1/1		
	PRDJ					

**JILIN** 东莞市锦凌电子有限公司  
DONGGUAN JINLING ELECTRONIC CO., LTD

JL105V-500XXG01

JL105V-5.0-XXP 螺钉式直脚绿色