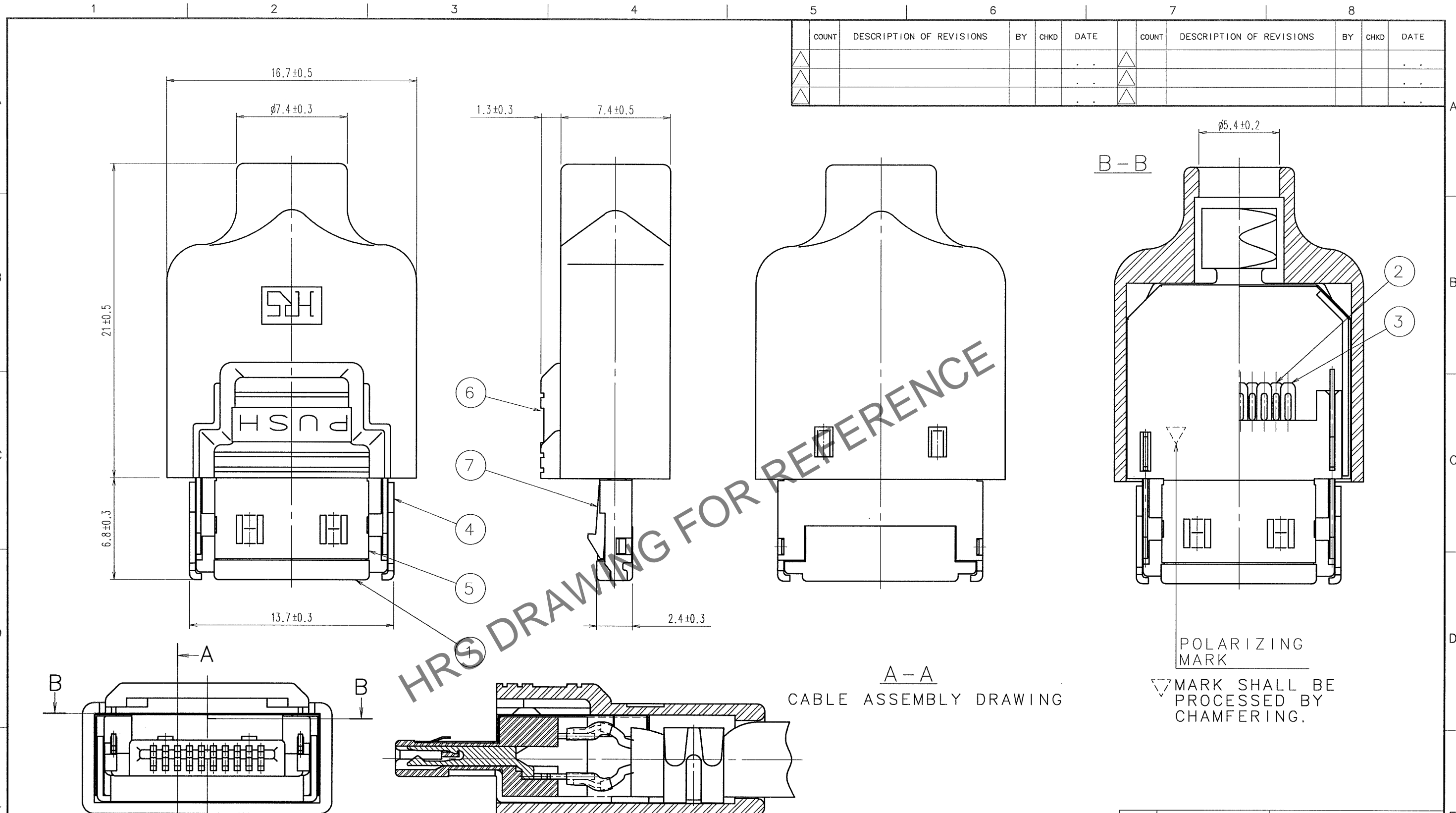


Jul.1.2024 Copyright 2024 HIROSE ELECTRIC CO., LTD. All Rights Reserved.  
 In case of consideration for using Automotive equipment / device which demand high reliability, kindly contact our sales window correspondents.



COUNT	DESCRIPTION OF REVISIONS	BY	CHKD	DATE	COUNT	DESCRIPTION OF REVISIONS	BY	CHKD	DATE
△				..	△				..
△				..	△				..
△				..	△				..

NOTE 1. THE COMPONENT PART NO. ④ ⑤ ⑥ SHALL BE ATTACHED.

②	PLATING CONTACT AREA	GOLD 0.2μm min.
	LEAD AREA	GOLD 0.03μm min.
	UNDER PLATING	NICKEL 2μm min.

3	COPPER ALLOY	②	7	STAINLESS STEEL	
2	COPPER ALLOY	②	6	PC (BLACK)	
1	PPS (BLACK) (UL94V-0)		5	PHOSPHOR BRONZE NICKEL 1μm min.	
			4	BRASS NICKEL 1μm min.	
NO.	MATERIAL	FINISH, REMARKS	NO.	MATERIAL	FINISH, REMARKS

CODE NO. (OLD)	DRAWN	DESIGNED	CHECKED	APPROVED	RELEASED
	E. Wakana	H. Kikuchi	N. Miyajima	[Signature]	
	'06.09.08	'06.09.08	'06.09.08	'06.09.08	

SCALE	DRAWING NO.	PART NO.
4 : 1	EDC3-047968-02	3240-10P-C(50)
UNITS	HIROSE ELECTRIC CO., LTD	CODE NO.
mm		CL232-0048-8-50

1/1