

CATEGORIES

For more information or to request assistance, please contact sales@precidip.com

[« Back to search results](#) **YOUR SELECTED PRODUCT**

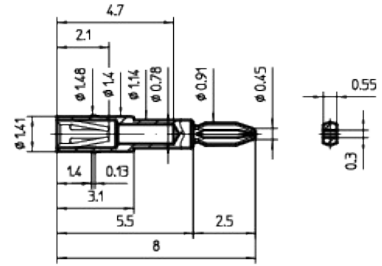
Screw-machined Contacts

04652
Socket contacts

For other versions than the listed available standard types, please contact PRECI-DIP

SPECIFICATIONS:

- Socket contact for solderless press-fit mount
- Press-in mount into dia 1.45 mm hole
 - Compliant press-fit tail
 - PCB finished hole diameter 0.71 mm
 - PCB thickness range 1.5 to 2 mm
 - Materials: body bronze, contact clip BeCu
 - Electrical contact resistance max. 15 milliohms
 - Mechanical life min. 500 cycles



AVAILABLE STANDARD TYPES

Ordering Part Number	RoHS	Plating Body	Plating Clip	Insertion	Extraction	Dia.Gauge	Max Current
04652-14-3170	RoHS	0.25µm Au	1.27µm Au	0.35 N	0.20 N	0.41 mm	3.0 A

CAD CATALOG

- Literature
- Catalog
- CAD catalog

ABOUT PRECI-DIP

- Career
- Contact
- Events

OTHER INFO

- Feedback
- Legal disclaimer
- Cross references

NEWSLETTER

Stay informed!

This website is using cookies for statistics, site optimization and retargeting purposes. You consent to our cookies if you continue to use this website. [Read more here.](#)

powered by