

6

5

4

3

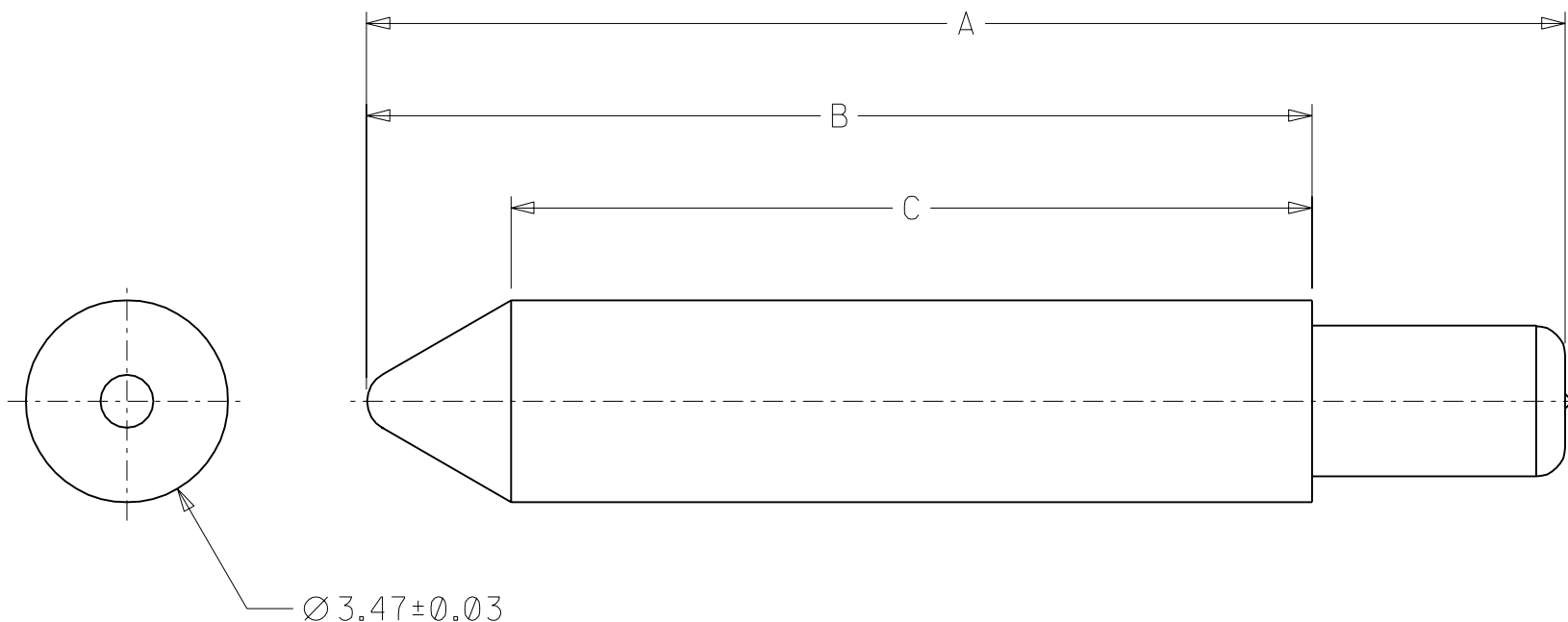
2

73648

MATERIAL NO.	DIM A	DIM B	DIM C
73648-0000	20.60	16.25	13.77
73648-0001	26.47	22.12	19.64
73648-0002	31.47	27.12	24.64

NOTES:

1. MATERIAL: STAINLESS STEEL
2. FINISH: FOR -0000 & -0002, PASSIVATE
FOR -0001, YELLOW CHROMATE
3. PRODUCT SPECIFICATION: PS-73670-9999
4. PACKAGING SPECIFICATION: BULK PACK IN PLASTIC BAG, 100 PARTS PER BAG
5. CONSULT FACTORY FOR INSTALLATION DETAILS.


 $\varnothing 3.47 \pm 0.03$

RELEASED FOR PROD EC NO. UDT2001-0991 DRWN: REED 01/03/20 CHK: BINGHAM 01/03/20 APPR: BIXLER 01/03/20	QUALITY SYMBOLS MAJOR $\blacktriangledown = 0$ CRITICAL $\triangle C = 0$	GENERAL TOLERANCES: (UNLESS SPECIFIED)		SCALE 8 : 1	DESIGN UNITS <input checked="" type="checkbox"/> mm <input type="checkbox"/> INCH	THIRD ANGLE PROJECTION	DIMENSIONS: <input type="checkbox"/> mm <input type="checkbox"/> INCH <input type="checkbox"/> mm <input checked="" type="checkbox"/> mm ONLY	SHT	REV
			mm	INCH	DRAWN BY & DATE REED 01/03/20		TITLE: SALES DRAWING, HDM BACKPLANE GUIDE POST		
		4 PLACES	$\pm 0.$	$\pm.$	CHECKED BY & DATE BINGHAM 01/03/20		MOLEX INCORPORATED		
		3 PLACES	$\pm 0.$	$\pm.$	APPROVED BY & DATE BIXLER 01/03/20		MATERIAL NO. DRAWING NO. SHEET NO. SEE CHART SD-73648-001 1 OF 1		
			2 PLACES	$\pm 0.$	± 0.10	ANGULAR: \pm °		DRAFT WHERE APPLICABLE MUST REMAIN WITHIN DIMENSIONS	
			1 PLACE	$\pm 0.$	$\pm.$	THIS DRAWING CONTAINS INFORMATION THAT IS PROPRIETARY TO MOLEX INCORPORATED AND SHOULD NOT BE USED WITHOUT WRITTEN PERMISSION.		SIZE A	

5

4

3

2

1

Mouser Electronics

Authorized Distributor

Click to View Pricing, Inventory, Delivery & Lifecycle Information:

[Molex:](#)

[73648-0001](#) [73648-0002](#)