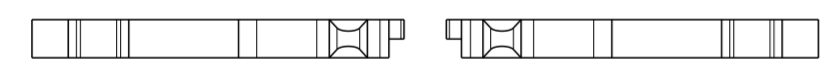
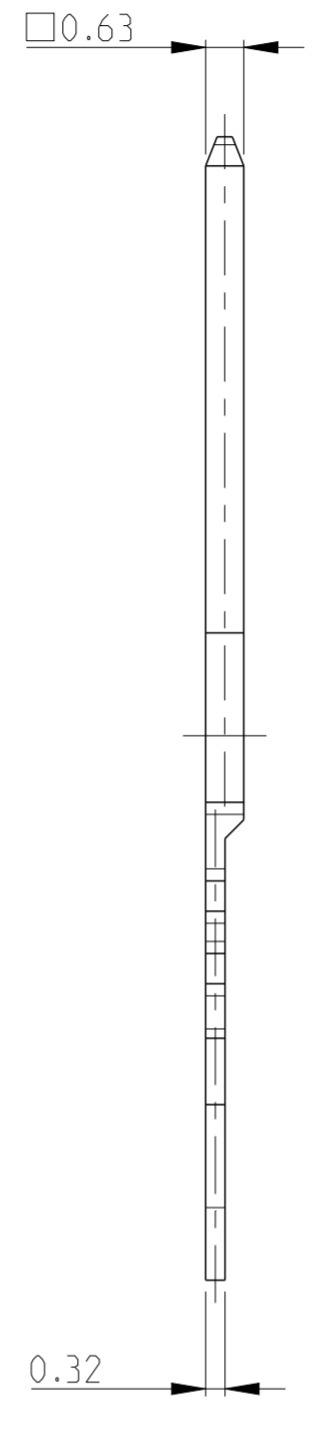
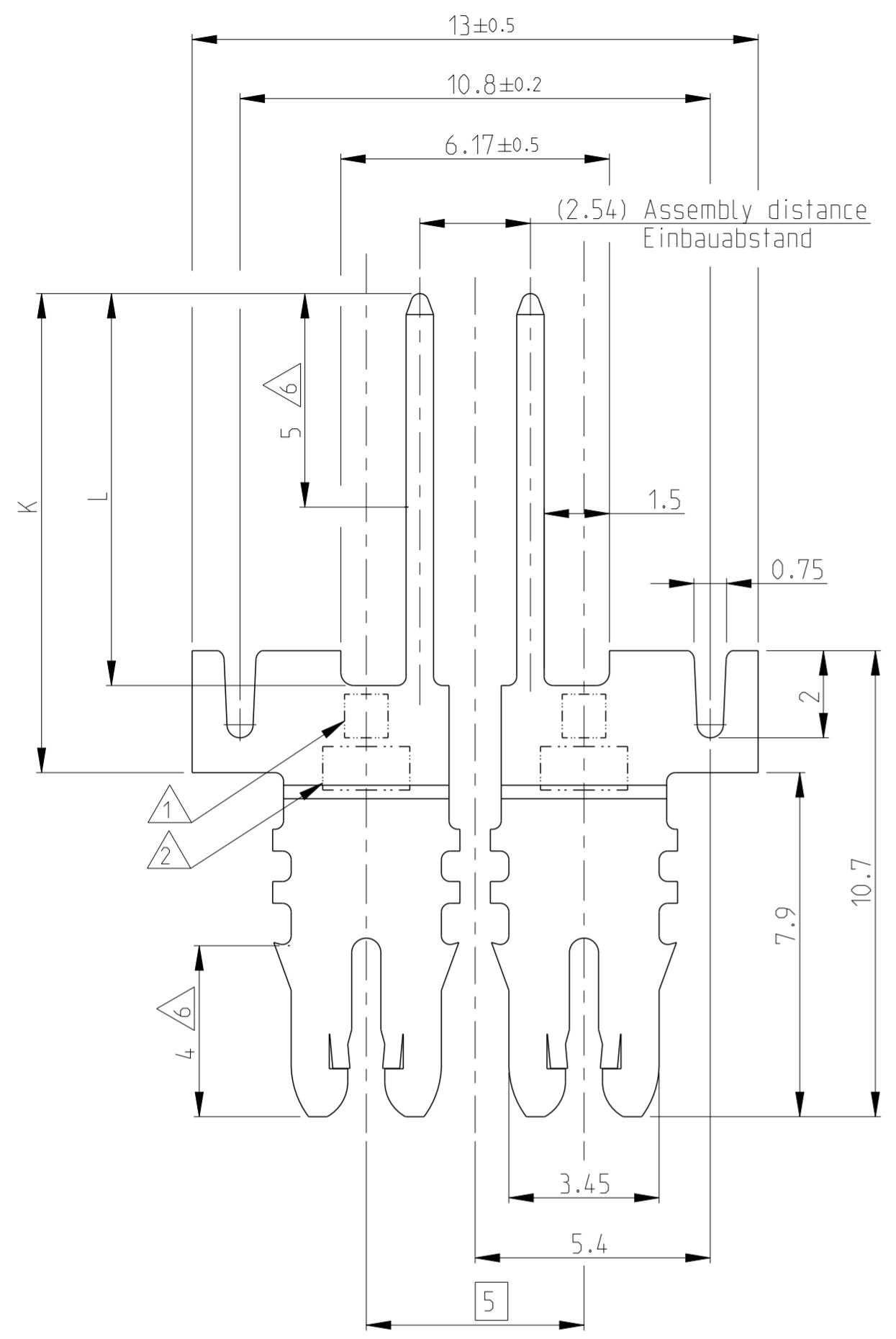
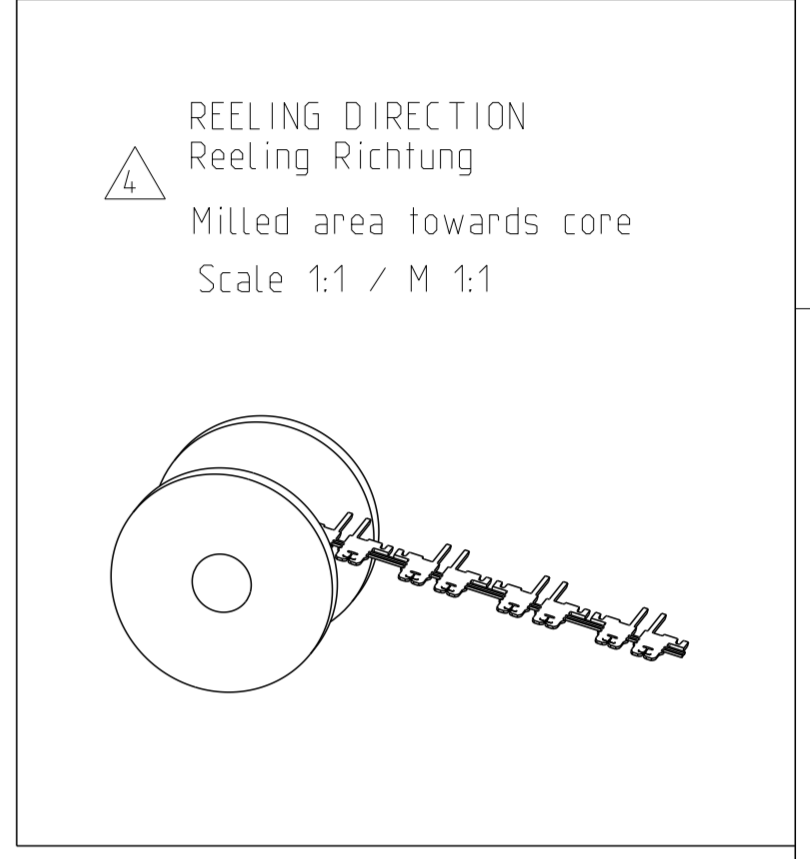


REVISIONS					
P	LTR	DESCRIPTION	DATE	DWN	APVD
	A1	NEW DRAWING CREATED	22OCT2007	TE	TG



- 7. Kontaktkammer nach Zeichnung TBD
CONTACT CHAMBER SEE DRAWING TBD
- 6. Kontaktbereich : Au ueber Ni.
Schneidklemmenbereich: Sn ueber Ni.
CONTACT AREA : Au OVER Ni.
INSULATION DISPL. CONTACT: Sn OVER Ni.
- 5. Zwei Draehte gleichen Durchmessers
TWO WIRES OF SAME DIAMETER
- 4. Reeling Richtung
REELING DIRECTION
- 3. Werkzeugvorschub : 13.8 mm
DIE FEED : 13.8 mm
- 2. TE- Markenzeichen
TE TRADEMARK
- 1. Kennziffer fuer Lackdrahtbereich
IDENTIFICATION NO. FOR MAGNET WIRE RANGE



24	-	0.850 to 1.120	L = 9.0 mm±0.2 K=11mm(+0.1/-0.2)	CuNiSi	7	6-1987226-7
				BLANK	7	6-1987226-1
				CuZn	7	5-1987226-7
				BLANK	7	5-1987226-1
5	-	L = 6.8 mm±0.2 K=8.8mm(+0.1/-0.2)	L = 6.8 mm±0.2 K=8.8mm(+0.1/-0.2)	CuNiSi	7	2-1987226-7
				BLANK	7	2-1987226-1
				CuZn	7	1-1987226-7
				BLANK	7	1-1987226-1
ID. MARK	DOUBLE W.	SINGLE W.	L	MATERIAL	FINISH	PART NO
	WIRE RANGE					

THIS DRAWING IS A CONTROLLED DOCUMENT.		DWN T.Ergel 22OCT2007	TE Connectivity NAME PAIR MAGMATE-MQS TERMINAL SIZE CAGE CODE DRAWING NO RESTRICTED TO A2 100779 C-1987226 - SCALE 8:1 SHEET 1 OF 1 REV A1		
DIMENSIONS: mm		CHK M.Boeffert 22OCT2007			
TOLERANCES UNLESS OTHERWISE SPECIFIED:		APVD T.Gerlach 22OCT2007			
0 PLC ±0.2 1 PLC ±0.2 2 PLC ±0.2 3 PLC ± 4 PLC ± ANGLES ±° FINISH		PRODUCT SPEC 108-1484 APPLICATION SPEC 114-2140 WEIGHT -			
MATERIAL SEE TABLE	SEE TABLE	Customer Drawing			