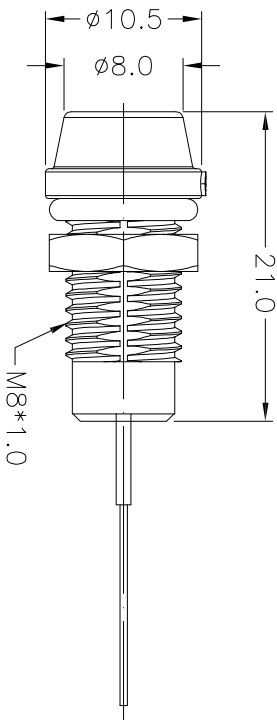
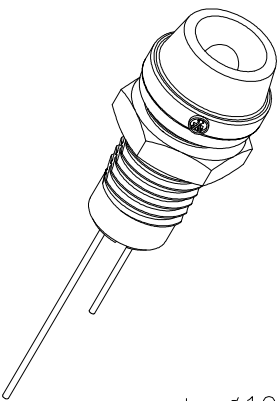
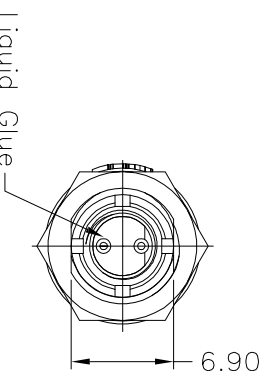
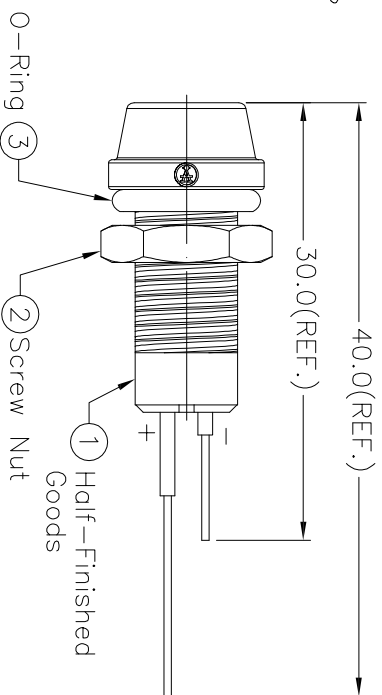
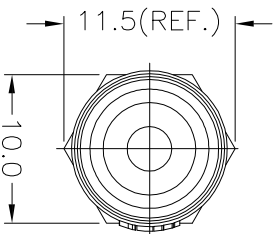


Recommended Panel Cut-Out



- Notes:
- Waterproof Rate: IP67
 - LED Holder: PC+ABS, Black
 - LED Ø3mm, Green
 - O-ring: EPDM, Black
 - Screw Nut: Nylon + GF
 - Operating Temperature: -40°C ~ +80°C
 - ① For Panel Thickness 6.5mm Max.
 - Forward Voltage: Typ. 2.2V/ Max. 2.4(V), Green.
 - Forward Current: Max. 30mA, Green.
 - Reverse Voltage: DC 5V
 - Luminous Intensity: Min. 2950/ Typ. 5000(Mcd)



RoHS compliant
Unit: mm

Scale	Free TOLERANCE
.X	±0.25
.XX	±0.1
.XXX	±0.05
DIM	TOL
Angle	±1°

Id.	Modification	Date	Name
①	Add forward bias current/voltage	03.09.2018	Segal
②	Drawn	11.03.2014	Winnie

Drawn	Date	Name
Drawn	11.03.2014	Winnie
Approved	03.09.2018	Amy

Customer-No.	Drawing-No.	Replace	Sheet
ASSMANN WSW-No.	ASSMANN WSW-No.	ASS 6229 CO	rev01
A-LED8-1GAAS-PR7-1	A-LED8-1GAAS-PR7-1		



1 2 3 4 5 6 7

A	B	C	D	E	F	G	H
---	---	---	---	---	---	---	---