

NOTES:

- HUOSING: LCP HIGH-TEMP THERMOPLASTIC UL94V-0 COLOR:BLAC
- TERMINAL/GROUND PLANE:PHOSPHOR BRONZE PLATING:10u" GOLD IN CONTACT AREA, MATTE TIN ON TAIL.

NO.of contacts	Dimensions		
	A.	B.	C.
28	20.00	18.48	0.10
56	40.00	38.48	0.10
84	60.00	58.48	0.15

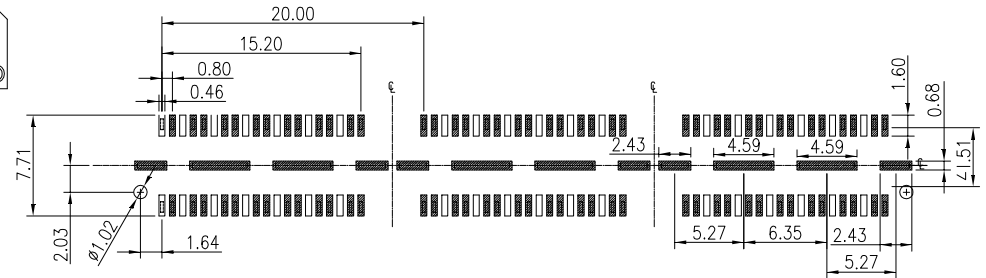
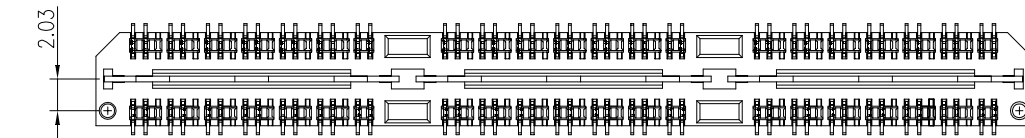
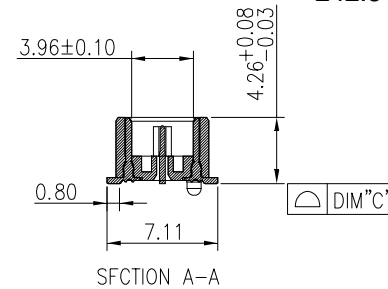
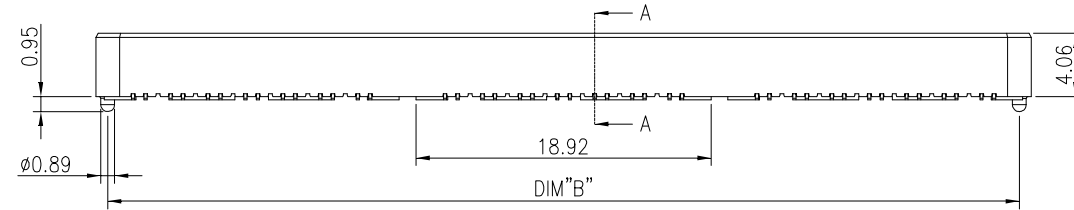
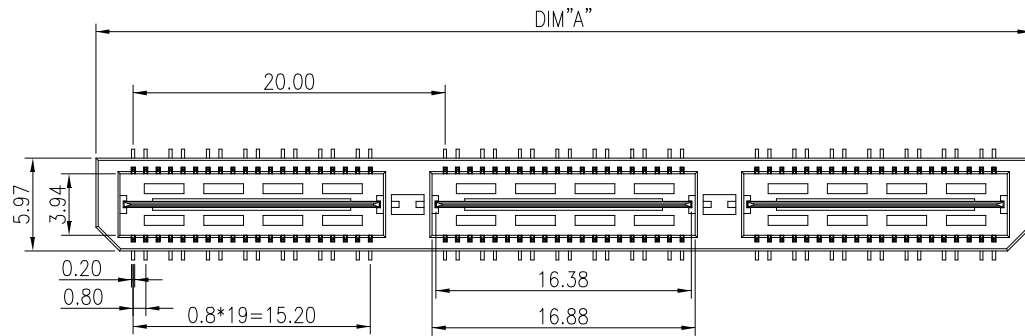
PART NO: BHTE08-XXXV01G10DPT

214:28PIN

228:56PIN

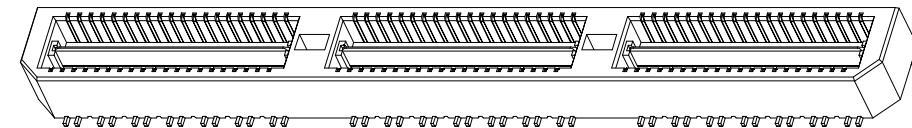
242:84PIN

G10: Au 10 μ "/Tin



RECOMMENDED PCB PATTERN DIM.

TOLERANCE : ±0.05



				OPERATION	SCALE	Fit	北京日晟万欣科技发展有限公司			
				X.X ±0.25	UNIT	MM				
				X.XX ±0.20	SIZE	A4	DESIGN	刘盛宇	PART NO.	BHTE08-XXXV01G10DPT
				X.XXX ±0.10	SHEET	1/1	CHECK	张轩硕	TITLE:	0.80mm Plug H4.26 带差分
				Angle ±3°	PROJ.	☉	APPROVE	张海洋	Customer No.	
REV	DATE	SYMBOL	MODIFICATION DESCRIPTION	DIM	TOL					
A	2017/10/16		NEW							