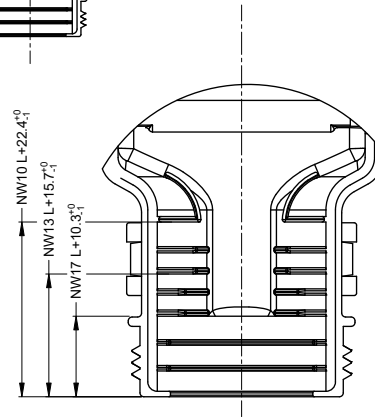
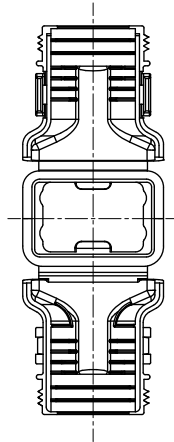
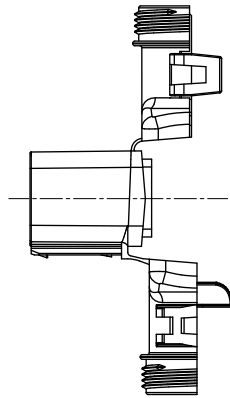
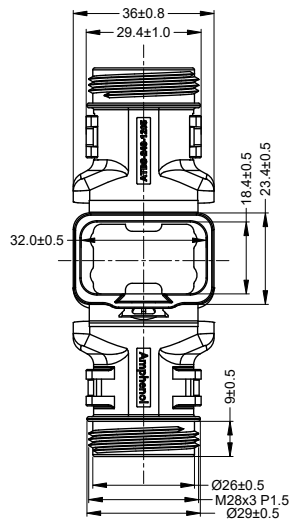
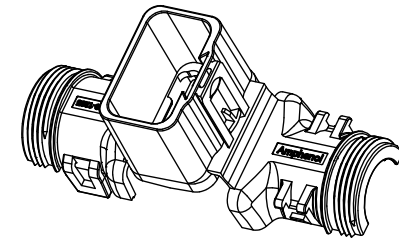


REVISIONS					
REV	ECO	DESCRIPTION	DATE	BY	APPR
A1	-	RELEASE NUMBER	SEP/27/23	LYNCH	TOMMY
A2	-	MOD. NOTE #2 & TITLE, ADD DOVETAIL NOTE	10APR24	JHEAD	DH



L+ =ADD LENGTH FOR CORRUGATED TUBE

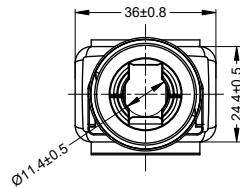
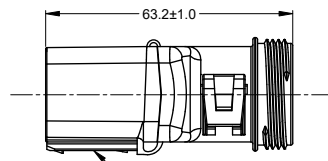
SCALE 2:1



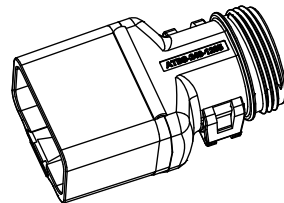
NOTES: UNLESS OTHERWISE SPECIFIED


1. MATERIAL: THERMOPLASTIC; COLOR: BLACK .
2. USE WITH AT04-12PX- * RECEPTACLES.
(X =A,B,C,D,KEYS; * = ALL MODIFICATIONS WITHOUT AN END CAP.
3. CABLE EXIT DESIGNED FOR CORRUGATED TUBE NW 10,13 AND 17.
4. RoHS COMPLIANT
5. ALL DIMENSIONS ARE FOR REFERENCE USE ONLY.

CLOSED (MOUNTED) CONDITION AS SHOWN



ENHANCED DOVETAIL
FOR MOUNTING CLIPS



ATBS-249-1205		REF:1011-249-1205	
QUANTITY	PART NUMBER	DESCRIPTION	ITEM
MATERIALS LIST			
UNLESS OTHERWISE SPECIFIED 1) All dimensions are in metric(mm). 2) Tolerances are as follows: 1 PL DEC ±0.30 Fractions ±1/64 2 PL DEC ±0.15 Angles ±1° 3 PL DEC ±0.08 3) Note reference = 		SIGNATURES DATE DRAWN: LYNCH.PAN SEP/27/23 CHECKED: SULEN.ZHANG SEP/28/23 ENGINEER: APPROVAL: TOMMY.XIE OCT/09/23 CUSTOMER:	<div>Amphenol</div> <div>Sine Systems - www.amphenol-sine.com 44724 Morley Drive Clinton Township, MI 48036</div>
MATERIAL SPECIFICATIONS: WEIGHT: 18.75g		THIS DRAWING IS SUPPLIED FOR INFORMATION ONLY. DESIGN FEATURES, SPECIFICATIONS AND PERFORMANCE DATA SHOWN HEREON ARE THE PROPERTY OF THE AMPHENOL CORPORATION. NO RIGHTS OF REPRODUCTION ARE IMPLIED. ALL DIMENSIONS ARE SUBJECT TO NORMAL MANUFACTURING VARIATIONS.	
PROCESS SPECIFICATIONS:			
NEXT ASSY:		SIZE: B C- SCALE: NONE	DWG NO: ATBS-249-1205 REVISION: A2
		SHEET 1	OF 1