

# THROUGH HOLE 433.92MHz SAW FILTER

**AFS433.92N01-SD02**

**RoHS**  
Compliant



φ 9.5 x 3.3 mm

## FEATURES:

- Compact size resistance weld sealed package

## APPLICATIONS:

- Remote Controller Receiver

## STANDARD SPECIFICATIONS:

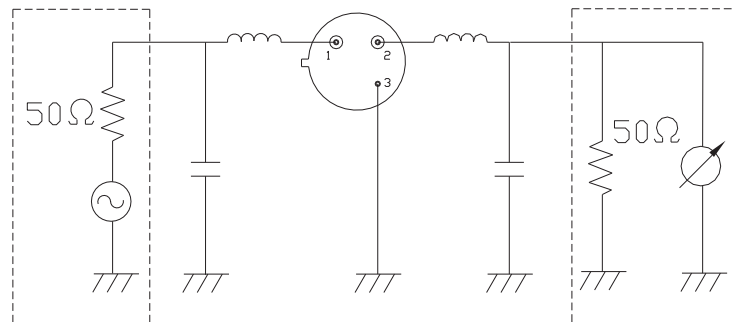
### Maximum Ratings

Item	Value
Operating Temperature Range	-40°C to +85°C
Storage Temperature Range	-40°C to +85°C
DC Voltage	12V DC
AC Voltage	10V (50Hz/60Hz)
Maximum Input Power	10 dBm

### Electrical Characteristics

Parameters	Minimum	Typical	Maximum	Units	Notes
Center Frequency ( $f_0$ )	433.84	433.92	434.00	MHz	
Insertion Loss	-----	1.7	3.0	MHz	
3dB Bandwidth	500	-----	800	kHz	
Rejection at $f_0-21.4$ MHz at $f_0-10.7$ MHz For Frequency F Where $10 \text{ MHz} < F < f_0-21.4 \text{ MHz}$ or $f_0+21.4 \text{ MHz} < F < 1000 \text{ MHz}$	40 15 30	50 40 80	----- ----- -----	dB	
Frequency Aging	-10	-----	+10	ppm/yr	
External Impedance Match Series Inductance L Shunt Capacitance C	----- -----	39 5.6	----- -----	nH pF	

## TEST CIRCUIT



REVISED: 04.18.2018

# THROUGH HOLE 433.92MHz SAW FILTER

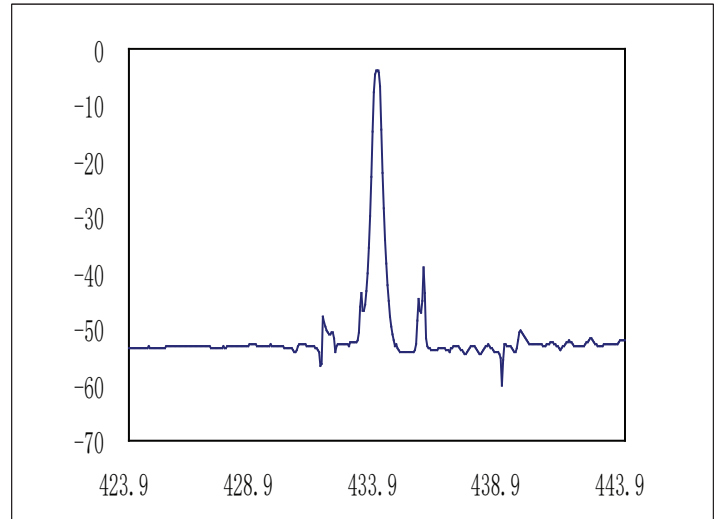
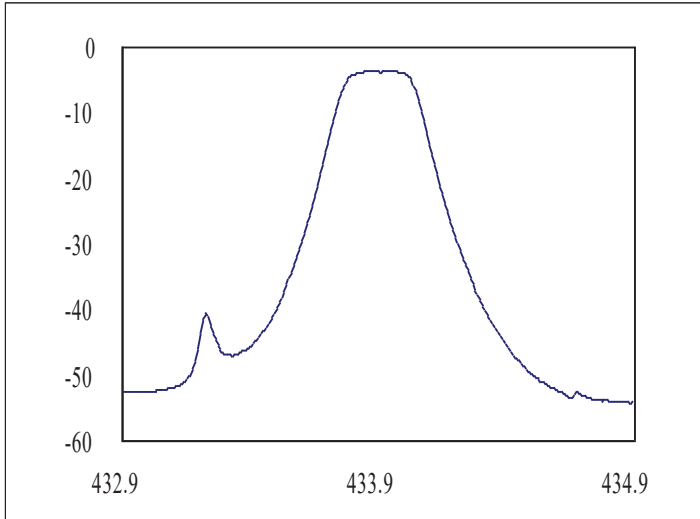
**AFS433.92N01-SD02**

**RoHS**  
Compliant



φ 9.5 x 3.3 mm

## ➤ FREQUENCY CHARACTERISTICS:



## ➤ OUTLINE DIMENSIONS:

