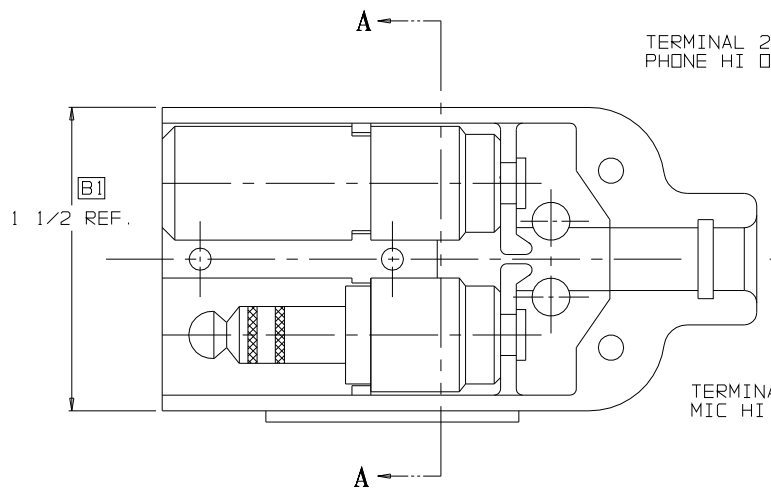
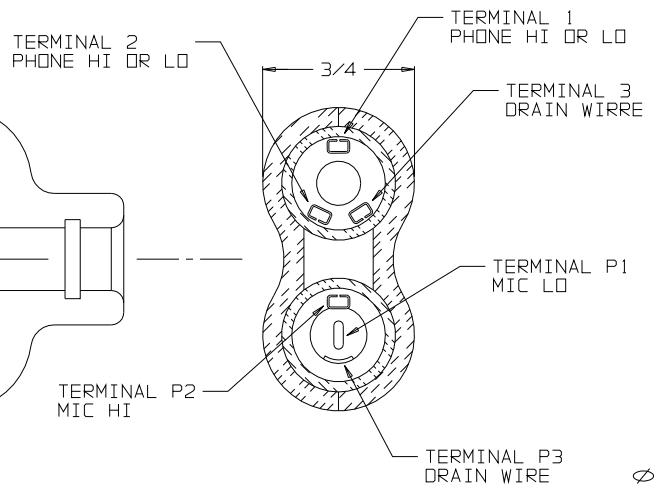


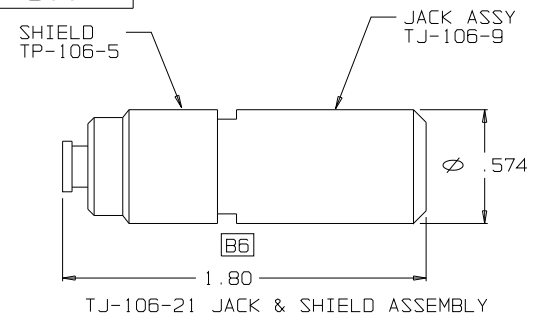
C TJ-106



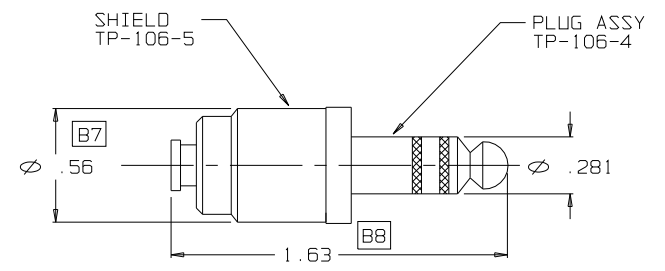
VIEW WITH HALF SHELL REMOVED



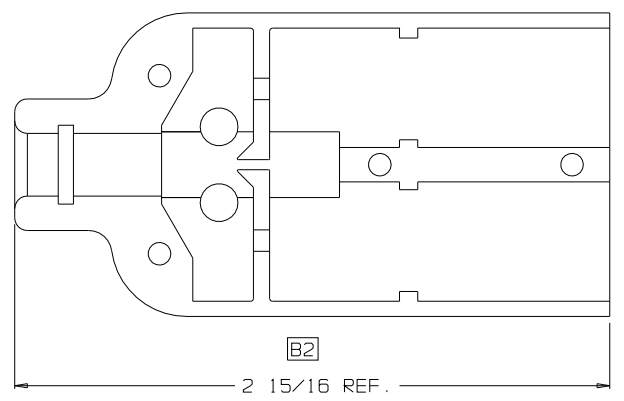
SECTION A-A



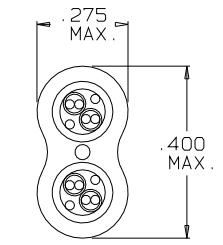
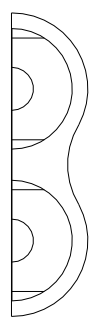
TJ-106-21 JACK & SHIELD ASSEMBLY



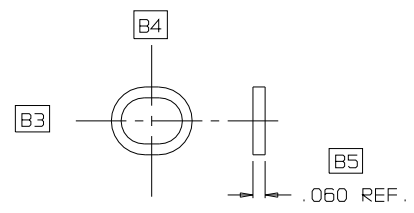
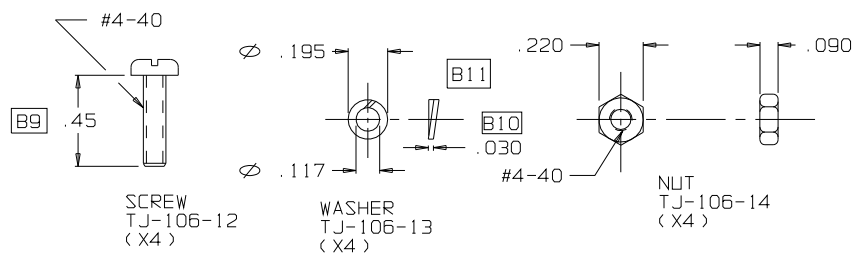
TP-106-10 PLUG & SHIELD ASSEMBLY



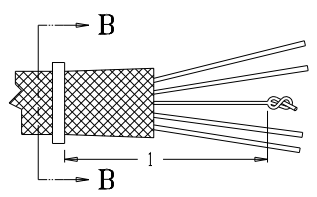
SHELL, HALF TJ-106-11 (X2)



SECTION B-B
STRAIN RELIEF CLAMP TJ-106-10A AFTER CRIMPING
SCALE: 4:1



RING, STRAIN RELIEF TJ-106-10A



STAY CORD-VARNISH KNOT

THIS DOCUMENT CONTAINS PROPRIETARY INFORMATION OF NEXUS, INCORPORATED AND SUCH INFORMATION MAY NOT BE DISCLOSED TO OTHERS FOR ANY PURPOSE OR USED FOR ANY PURPOSE WITHOUT THE WRITTEN CONSENT OF NEXUS.

DWN. BY EWT		DATE 8/3/01	MATERIAL _____	
CHECKED BY _____		DATE _____	FINISH _____	
APPR. BY _____		DATE _____	WEIGHT _____	SCALE 2:1
UNLESS OTHERWISE SPECIFIED DIMENSIONS ARE IN INCHES		TITLE JACK-TELEPHONE-BIAxIAL SHIELDED (6) CONDUCTOR		
TOLERANCES ON FRACTIONS DECIMALS ANGLES		DO NOT SCALE DWG. SHEET 1 OF 1		
LET.	REVISION	CN #	DATE	CHK.
B	1. 2 & 5 ADD REF. 3. DELETE 325 4. DELETE 400 5. WAS 1.800 6. WAS 1.630 7. WAS 1.630 8. WAS .055+ .010 9. ADD .030 10. ADD .030 11. DELETE .050	031	11/2/09	GPH
A	INITIAL RELEASE		8/18/01	EWT

NEXUS STAMFORD, CONN
SIZE C
DWG. NO. TJ-106