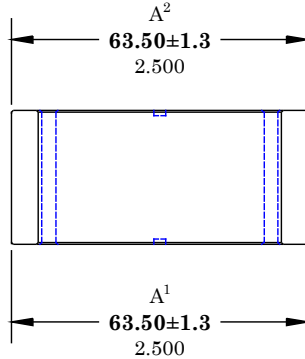


** Not all features are shown in this drawing. For more detailed information, please contact your Fair-Rite representative.

UNCONTROLLED ~CATALOG~ DRAWING

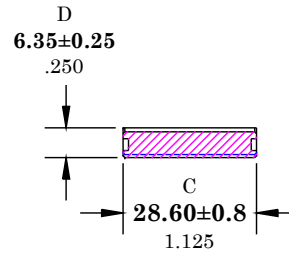
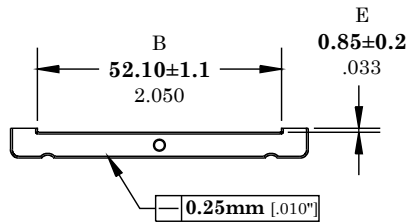
| | | |
|------|------------|------|
| SIZE | PART NO. | REV. |
| B | 2643163951 | ~ |



A¹ - A²
0.80 Max.
 .031 Max.

ELECTRICAL SPECIFICATIONS

| IMPEDANCE (OHMS) | |
|---|----------|
| 25 MHz | 100 MHz |
| 71 Min. | 158 Min. |
| N=1 #22AWG WL=3" <small>MATE PAIR</small> MEASURED AT END OF SLOT | |



DIMENSIONS
BOLD NUMBERS ARE IN MILLIMETERS
 LIGHT NUMBERS ARE IN INCHES

NOTES:

1 - IMPEDANCE MEASURED ON AN E4991A USING A 16092A TEST FIXTURE.

FR# 43

| | | | | |
|-----------------------------------|-------------------|-------|------------|--------------|
| FAIR-RITE PRODUCTS CORP. | | | | |
| TITLE FLAT CABLE SUPPRESSION CORE | | | | |
| DRAWN BY D. FOOTE | DATE 1/23/2020 | SIZE | PART NO. | REV. |
| CHKD BY | | B | 2643163951 | ~ |
| APPRVD BY | | SCALE | NONE | SHEET 1 of 1 |