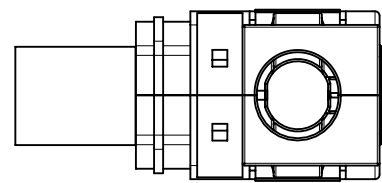
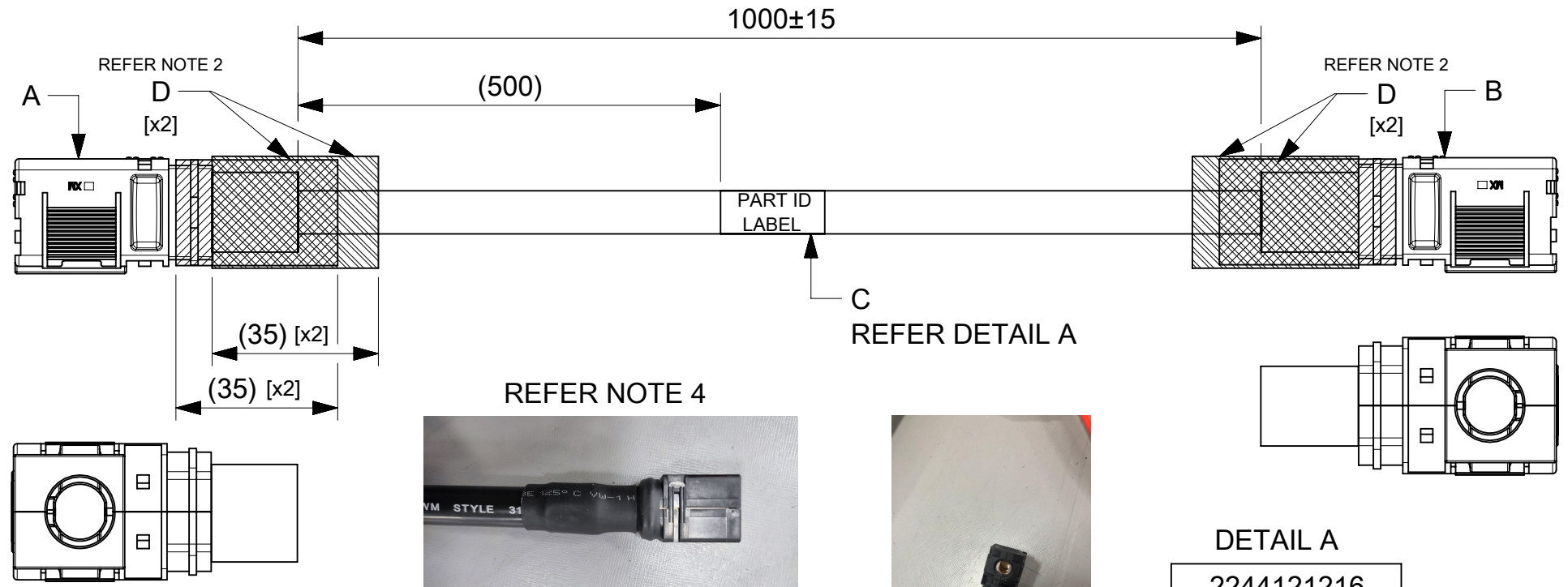


ITEM #	MOLEX PART#	DESCRIPTION	QTY	UOM
A,B	2169400001	8mm SIDEWIZE ASSY 1/0 AWG RECEPT RED	2	PC
C	-	PART ID LABEL	1	PC
D	-	HST	A/R	M

FROM	TO	CABLE PART#	DESCRIPTION	COLOR
A	B	-	1X1/0AWG DISC SR RD UL3132	RED



DETAIL A
2244121216
MOLEX
BATCH WK/YR

- NOTE:
1. CABLE ASSEMBLY TO BE ENSURED FOR CONTINUITY.
 2. INSTALL HST ON THE BARREL AS SHOWN IN DRAWING.
 3. ENSURE LATCH AND THE CRIMPING PROFILE ARE IN THE SAME PLANE.
 4. HST (2 QTY) TO BE COVERED FROM THE WIRE INSULATION TO OVER THE RIB, TO ENSURE THERE IS NO EXPOSURE OF BARE MATERIAL.

FUNCTIONAL SYMBOLS $\nabla_A = 0$ $\nabla_E = 0$ $\nabla_P = 0$	THIS DRAWING CONTAINS INFORMATION THAT IS PROPRIETARY TO MOLEX ELECTRONIC TECHNOLOGIES, LLC AND SHOULD NOT BE USED WITHOUT WRITTEN PERMISSION								
	DIMENSION UNITS	SCALE				CURRENT REV DESC:			
	mm	NTS	EC NO: 769245						
	GENERAL TOLERANCES (UNLESS SPECIFIED)		DRWN: ROHITJ3 2023/11/09						
ANGULAR TOL ± °		CHK'D: SKUMAR07 2023/11/27							
4 PLACES ±		APPR: SKUMAR07 2023/11/27							
3 PLACES ±		INITIAL REVISION:							
2 PLACES ±		DRWN: MARUTG 2023/04/25							
1 PLACE ±		APPR: SKUMAR07 2023/04/27							
0 PLACES ±		DOCUMENT NUMBER							
DRAFT WHERE APPLICABLE MUST REMAIN WITHIN DIMENSIONS		THIRD ANGLE PROJECTION	DRAWING	SERIES	MATERIAL NUMBER	CUSTOMER	DOC TYPE	DOC PART	REVISION
			A4-SIZE	224412	2244121216	GENERAL MARKET	PSD	000	E
									SHEET NUMBER
									1 OF 1

DOCUMENT STATUS	P1	RELEASE DATE	2023/11/27	07:23:54
-----------------	----	--------------	------------	----------