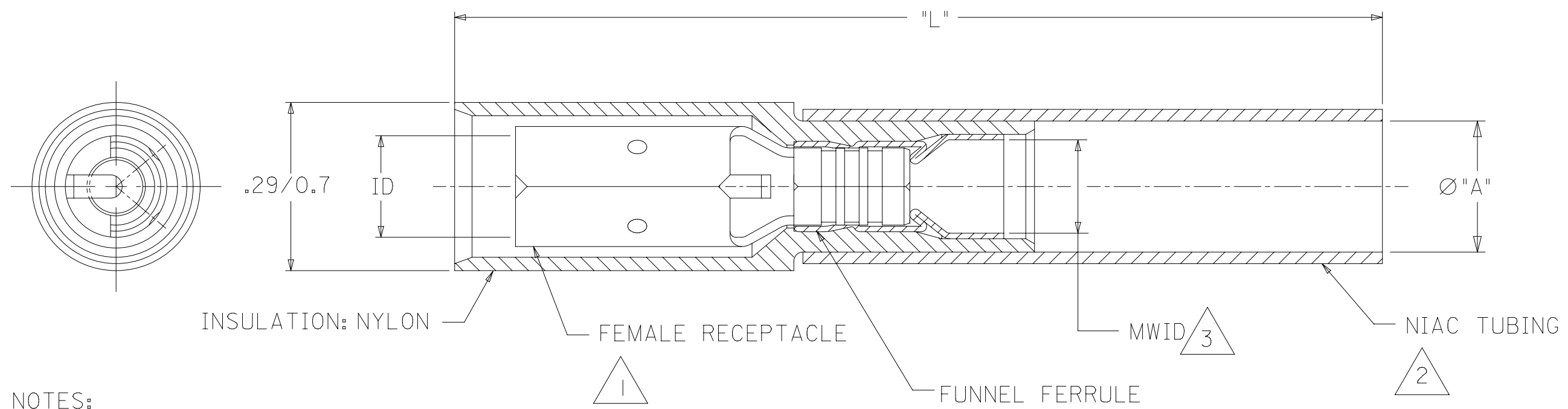
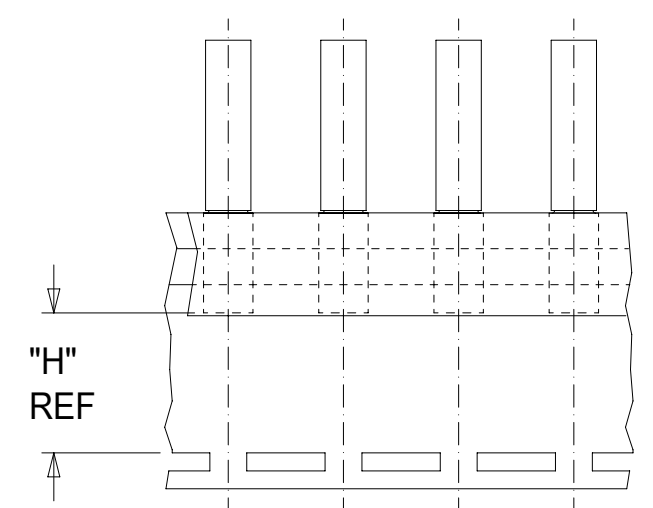


MAT'L NO	ENG NO	MAT'L NO (ON TAPE)	ENG NO (ON TAPE)	AWG	COLOR	MWID	"ID" MIN	"L" MAX	"A" MIN	"H" REF
191640052	SBRA-8156N	191641151	SBRA-8156NT	22-18	RED	.13 (3.3)	.156 (3.96)	1.63 (41.4)	.230 (5.84)	.42 (10.7)
191640053	SBRA-8180N	191641152	SBRA-8180NT				.180 (4.57)			
191640054	SBRB-8156N	191640414	SBRB-8156NT	16-14	BLUE	.15 (3.8)	.156 (3.96)			
191640055	SBRB-8180N	191641147	SBRB-8180NT				.180 (4.57)			

(D4) (D4)



- NOTES:
- 1 TERMINAL
MATERIAL: COPPER
PLATING: TIN
 - 2 INSULATION
MATERIAL: HEAT SHRINKABLE
NIAC TUBING W/ HOT-MELT
ADHESIVE INNER LINER
 - 3 MWID= MAXIMUM WIRE INSULATION DIAMETER
4. PARTS ARE ROHS COMPLIANT.

THIS DRAWING CONTAINS INFORMATION THAT IS PROPRIETARY TO MOLEX ELECTRONIC TECHNOLOGIES, LLC AND SHOULD NOT BE USED WITHOUT WRITTEN PERMISSION

DIMENSION UNITS	SCALE	CURRENT REV DESC: "L" WAS 1.62/41.2 FOR 191640052, "A" WAS .235/5.97 FOR 191640052 AND 191640053	
INCH/MM	NTS		
GENERAL TOLERANCES (UNLESS SPECIFIED)			
	MM	INCH	
4 PLACES	±	±	
3 PLACES	±	±	
2 PLACES	± 0.25	± 0.01	
1 PLACE	± 0.5	± 0.02	
0 PLACES	±	±	
ANGULAR TOL	± 0.5°		
DRAFT WHERE APPLICABLE MUST REMAIN WITHIN DIMENSIONS		THIRD ANGLE PROJECTION	DRAWING
		19164	B-SIZE

EC NO: 760310		2023/08/21	
DRWN: DEANNM1		2023/08/23	
CHK'D: ETHRODAHL		2023/08/23	
APPR: ETHRODAHL		2023/08/23	
INITIAL REVISION:			
DRWN: BENDERLE		2004/09/10	
APPR: RDEROSS		2004/09/13	
DOCUMENT NUMBER		DOC TYPE	DOC PART
SD-19164-035		PSD	001
MATERIAL NUMBER		CUSTOMER	SHEET NUMBER
		GENERAL MARKET	1 OF 1