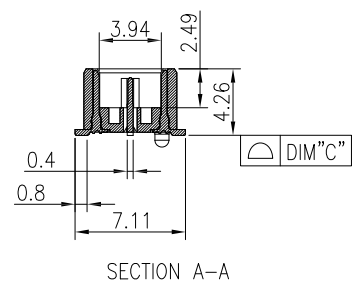


- NOTES:
- HUOSING:LCP HIGH-TEMP THERMOPLASTIC UL94V-0 COLOR:BLACK
 - TERMINAL/GROUND PLANE:PHOSPHOR BRONZE
PLATING:10μ GOLD IN CONTACT AREA, MATTE TIN ON TALL.
 - Operating Temp Range: -55 to +125
 - Current Rating:
Contact : 2A per pin
Ground Plane : 25A per ground plane
 - Voltage Rating : 175 VAC
 - Max Cycles : 175 VAC

NO.of contacts	Dimensions		
	A.	B.	C.
60	20.00	18.48	0.10
120	40.00	38.48	0.10
180	60.00	58.48	0.15
240	80.00	78.48	0.15
300	100.00	98.48	0.15

PART NO:
PART NO: BHTH05-XXX V01 G10 T
230:60PIN
260:120PIN
290:180PIN
G10: Au 10μ"/Tin



OPERATION		SCALE		FIT		MODIFICATION DESCRIPTION	
DIM	TOL						
X.X	±0.30	DRAW	LIUSHENGYU	UNIT	mm		
X.XX	±0.13	DESIGN	LIUSHENGYU	DATE	2017/03/20	SIZE	A4
X.XXX	±0.05	CHECK	LVHAIXIN	SHEET	1/2	TITLE:	0.50mm DOUBLE ROW BTB PLUG H4.26
Angle	±3°	APPROVE	LVHAIXIN	REV	A0	PROJ.	



PART NO. BHTH05-XXXV01G10T
TITLE: 0.50mm DOUBLE ROW BTB PLUG H4.26