

FUNCTIONAL SYMBOLS	THIS DRAWING CONTAINS INFORMATION THAT IS PROPRIETARY TO MOLEX ELECTRONIC TECHNOLOGIES, LLC AND SHOULD NOT BE USED WITHOUT WRITTEN PERMISSION	
	DIMENSION UNITS	SCALE
$\nabla_A = 0$	mm	2:1
$\nabla_E = 0$	GENERAL TOLERANCES (UNLESS SPECIFIED)	
$\nabla_V = 0$	ANGULAR TOL $\pm 1.0^\circ$	
DIVISIONAL SYMBOLS	4 PLACES	\pm
	3 PLACES	\pm
	2 PLACES	± 0.05
	1 PLACE	± 0.3
	0 PLACES	± 0.5
	DRAFT WHERE APPLICABLE MUST REMAIN WITHIN DIMENSIONS	
	THIRD ANGLE PROJECTION	DRAWING
		A3-SIZE
	SERIES	120404
	MATERIAL NUMBER	SEE PART LIST
	CUSTOMER	GENERAL MARKET
	SHEET NUMBER	1 OF 3
	EC NO: 736602	
	DRWN: RSCHIEBER	2023/01/30
	CHK'D: RSILLER	2023/01/31
	APPR: RSILLER	2023/01/31
	INITIAL REVISION:	
	DRWN: FDAFERNER	2021/02/15
	APPR: RSILLER	2022/07/12
	DOCUMENT NUMBER	1204040021
	DOC TYPE	PSD
	DOC PART	000
	REVISION	A1

TABLE 1 - 4P A-CODE

ITEM	QTY	DESCRIPTION	MATERIAL	FINISH/COLOR
1	1	SHELL M16 FE BRASS FM L20 NI REC U12	BRASS	Ni
2	1	NUT M16X1.5 BRASS NI HEX		
3	1	GASKET OR NBR 11X2 BK	NBR	BLACK
4	1	GASKET OR FPM 7.1X1.35 RD 60	FPM	RED
5	1	INSERT M12 FE 4P AC TPU BK UNSH	TPU	BLACK
6	4	CONTACT 10 FE STA AU CR WRA 0.14-0.50	BRASS	Au
7	1	WIRE;22AWG;BU;1.58;PVC;17x0.16;UL1569	PVC	BLUE
8	1	WIRE;22AWG;BN;1.58;PVC;17x0.16;UL1569		BROWN
9	1	WIRE;22AWG;BK;1.58;PVC;17x0.16;UL1569		BLACK
10	1	WIRE;22AWG;WH;1.58;PVC;17x0.16;UL1569		WHITE
11	1	LABEL;SELF L.YELLOW(2.25X.75IN)	VINYL	YELLOW
12	-	POTTING MATERIAL	-	-

TABLE 2 - 5P A-CODE

ITEM	QTY	DESCRIPTION	MATERIAL	FINISH/COLOR
1	1	SHELL M16 FE BRASS FM L20 NI REC U12	BRASS	Ni
2	1	NUT M16X1.5 BRASS NI HEX		
3	1	GASKET OR NBR 11X2 BK	NBR	BLACK
4	1	GASKET OR FPM 7.1X1.35 RD 60	FPM	RED
5	1	INSERT M12 FE 5P AC TPU BK UNSH	TPU	BLACK
6	5	CONTACT 10 FE STA AU CR WRA 0.14-0.50	BRASS	Au
7	1	WIRE;22AWG;BU;1.58;PVC;17x0.16;UL1569	PVC	BLUE
8	1	WIRE;22AWG;BN;1.58;PVC;17x0.16;UL1569		BROWN
9	1	WIRE;22AWG;BK;1.58;PVC;17x0.16;UL1569		BLACK
10	1	WIRE;22AWG;WH;1.58;PVC;17x0.16;UL1569		WHITE
11	1	WIRE;20AWG;GN/YE;1.76;PVC;26x0.16;UL1569		GREEN/YELLOW
12	1	LABEL;SELF L.YELLOW(2.25X.75IN)	VINYL	YELLOW
13	-	POTTING MATERIAL	-	-

TABLE 3 - 8P A-CODE


ITEM	QTY	DESCRIPTION	MATERIAL	FINISH/COLOR
1	1	SHELL M16 FE BRASS FM L20 NI REC U12	BRASS	Ni
2	1	NUT M16X1.5 BRASS NI HEX		
3	1	GASKET OR NBR 11X2 BK	NBR	BLACK
4	1	GASKET OR FPM 7.1X1.35 RD 60	FPM	RED
5	1	INSERT M12 FE 8P AC REC PUR BK UNSH	PUR	BLACK
6	8	CONTACT 8 FE TUR AU CR SHORT 7/8POLE	BRASS	Au
7	1	WIRE;24AWG;BU;1.43;PVC;11x0.16;UL1569	PVC	BLUE
8	1	WIRE;24AWG;BN;1.43;PVC;11x0.16;UL1569		BROWN
9	1	WIRE;24AWG;YE;1.43;PVC;11x0.16;UL1569		YELLOW
10	1	WIRE;24AWG;GN;1.43;PVC;11x0.16;UL1569		GREEN
11	1	WIRE;24AWG;GY;1.43;PVC;11x0.16;UL1569		GREY
12	1	WIRE;24AWG;PK;1.43;PVC;11x0.16;UL1569		PINK
13	1	WIRE;24AWG;RD;1.43;PVC;11x0.16;UL1569		RED
14	1	WIRE;24AWG;WH;1.43;PVC;11x0.16;UL1569	WHITE	
15	1	LABEL;SELF L.YELLOW(2.25X.75IN)	VINYL	YELLOW
16	-	POTTING MATERIAL	-	-

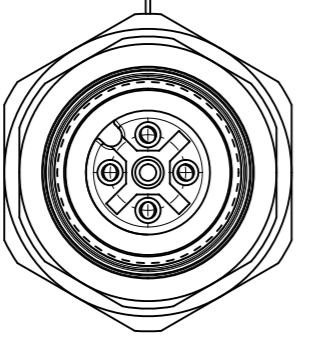
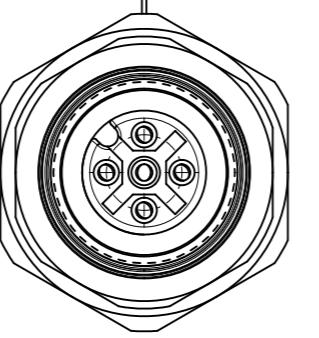
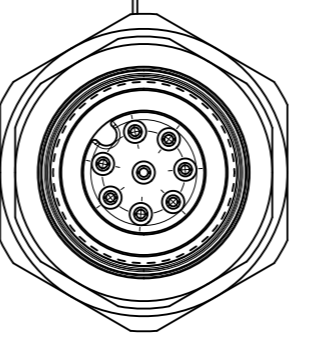
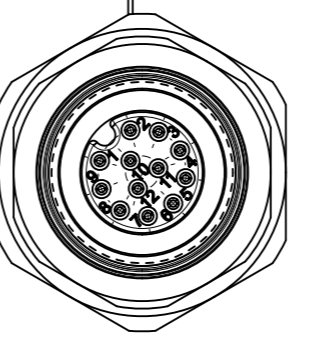
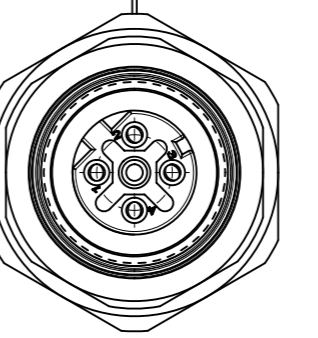
TABLE 4 - 12P A-CODE

ITEM	QTY	DESCRIPTION	MATERIAL	FINISH/COLOR
1	1	SHELL M16 FE BRASS FM L20 NI REC U12	BRASS	Ni
2	1	NUT M16X1.5 BRASS NI HEX		
3	1	GASKET OR NBR 11X2 BK	NBR	BLACK
4	1	GASKET OR FPM 7.1X1.35 RD 60	FPM	RED
5	1	INSERT M12 FE 12P AC PUR BK SHD	PUR	BLACK
6	1	M12S-FRONT SHELL-FEMALE SHIELD	BRASS	Ni
7	12	M12-Fem-Contact-12pol		Au
8	1	WIRE;26AWG;BU;1.30;PVC;7x0.16;UL1569	PVC	BLUE
9	1	WIRE;26AWG;BN;1.30;PVC;7x0.16;UL1569		BROWN
10	1	WIRE;26AWG;YE;1.30;PVC;7x0.16;UL1569		YELLOW
11	1	WIRE;26AWG;GN;1.30;PVC;7x0.16;UL1569		GREEN
12	1	WIRE;26AWG;GY;1.30;PVC;7x0.16;UL1569		GREY
13	1	WIRE;26AWG;PK;1.30;PVC;7x0.16;UL1569		PINK
14	1	WIRE;26AWG;RD;1.30;PVC;7x0.16;UL1569		RED
15	1	WIRE;26AWG;BK;1.30;PVC;7x0.16;UL1569		BLACK
16	1	WIRE;26AWG;VT;1.30;PVC;7x0.16;UL1569		VIOLET
17	1	WIRE;26AWG;WH;1.30;PVC;7x0.16;UL1569		WHITE
18	1	WIRE;26AWG;GY/PK;1.30;PVC;7x0.16;UL1569	GREY/PINK	
19	1	WIRE;26AWG;RD/BU;1.30;PVC;7x0.16;UL1569	RED/BLUE	
20	1	LABEL;SELF L.YELLOW(2.25X.75IN)	VINYL	YELLOW
21	-	POTTING MATERIAL	-	-

TABLE 5 - 4P D-CODE

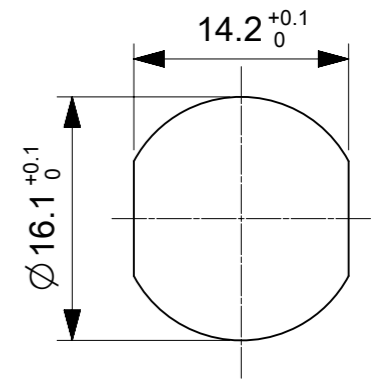
ITEM	QTY	DESCRIPTION	MATERIAL	FINISH/COLOR
1	1	SHELL M16 FE BRASS FM L20 NI REC U12	BRASS	Ni
2	1	NUT M16X1.5 BRASS NI HEX		
3	1	GASKET OR NBR 11X2 BK	NBR	BLACK
4	1	GASKET OR FPM 7.1X1.35 RD 60	FPM	RED
5	1	INSERT M12 FE 4P DC CSE PUR BK UNSH	PUR	BLACK
6	4	CONTACT 10 FE STA AU CR WRA 0.14-0.50	BRASS	Au
7	1	WIRE;22AWG;BU;1.58;PVC;17x0.16;UL1569	PVC	BLUE
8	1	WIRE;22AWG;OG;1.58;PVC;17x0.16;UL1569		ORANGE
9	1	WIRE;22AWG;YE;1.58;PVC;17x0.16;UL1569		YELLOW
10	1	WIRE;22AWG;WH;1.58;PVC;17x0.16;UL1569		WHITE
11	1	LABEL;SELF L.YELLOW(2.25X.75IN)	VINYL	YELLOW
12	-	POTTING MATERIAL	-	-

FUNCTIONAL SYMBOLS	THIS DRAWING CONTAINS INFORMATION THAT IS PROPRIETARY TO MOLEX ELECTRONIC TECHNOLOGIES, LLC AND SHOULD NOT BE USED WITHOUT WRITTEN PERMISSION	CURRENT REV DESC: CHANGED MIN. TEMP. IN TABLE			
	$\nabla_A = 0$ $\nabla_E = 0$ $\nabla_F = 0$	DIMENSION UNITS: mm SCALE: 1:1	GENERAL TOLERANCES (UNLESS SPECIFIED) ANGULAR TOL $\pm 1.0^\circ$		
DIVISIONAL SYMBOLS	EC NO: 736602	DRWN: RSCHIEBER	2023/01/30	PRODUCT CUSTOMER DRAWING	
	4 PLACES \pm 3 PLACES \pm 2 PLACES ± 0.05 1 PLACE ± 0.3 0 PLACES ± 0.5	CHK'D: RSILLER APPR: RSILLER	2023/01/31 2023/01/31		
DRAFT WHERE APPLICABLE MUST REMAIN WITHIN DIMENSIONS		THIRD ANGLE PROJECTION	DRAWING: A3-SIZE	SERIES: 120404	MATERIAL NUMBER: SEE PART LIST CUSTOMER: GENERAL MARKET SHEET NUMBER: 2 OF 3

POLES	4 POLE	5 POLE	8 POLE	12 POLE	4 POLE
LAYOUT					
VOLTAGE RATING	250V	60V	30V	30V	250V
CODING	A - Code	A - Code	A - Code	A - Code	D - Code
AMPERE RATING	4A	4A	2A	1.5A	4A
PROTECTION CLASS CONNECTOR INTERFACE SHELL TO ENCLOSURE	IP 67/69K (in mated condition / when properly installed)				
OPERATING TEMP.	-40°C / 85°C				
UL CERTIFICATION	FILE NO. E152210				
CSA CERTIFICATION	FILE NO. LR6837				
WIRE LEAD	0.34 mm ² PVC	0.34 mm ² PVC	0.25 mm ² PVC	0.14 mm ² PVC	0.34 mm ² PVC
PIN DIAMETER	1.0 mm	1.0 mm	0.8 mm	0.6 mm	1.0 mm
WIRE COLOR	ACCORDING TO IEC 60947-5-2		ACCORDING TO DIN 47100		ACC. TO IEC 60947-5-2

NOTE:
1. PANEL THICKNESS MAX. 5.3mm

RECOMMENDED PANEL CUTOUT



PART LIST 4P AC

MOLEX P/N	ENGINEERING NUMBER	DESCRIPTION	L [mm]	TOL
1204040021	YR4U20E03C300	REC U12 4P AC FE M16 FM WIR BRASS NI 0.3M	300	+40
1204040041	YR4U20E03C500	REC U12 4P AC FE M16 FM WIR BRASS NI 0.5M	500	+40

PART LIST 5P AC

MOLEX P/N	ENGINEERING NUMBER	DESCRIPTION	L [mm]	TOL
1204040022	YR5U20E03C300	REC U12 5P AC FE M16 FM WIR BRASS NI 0.3M	300	+40
1204040042	YR5U20E03C500	REC U12 5P AC FE M16 FM WIR BRASS NI 0.5M	500	+40

PART LIST 8P AC

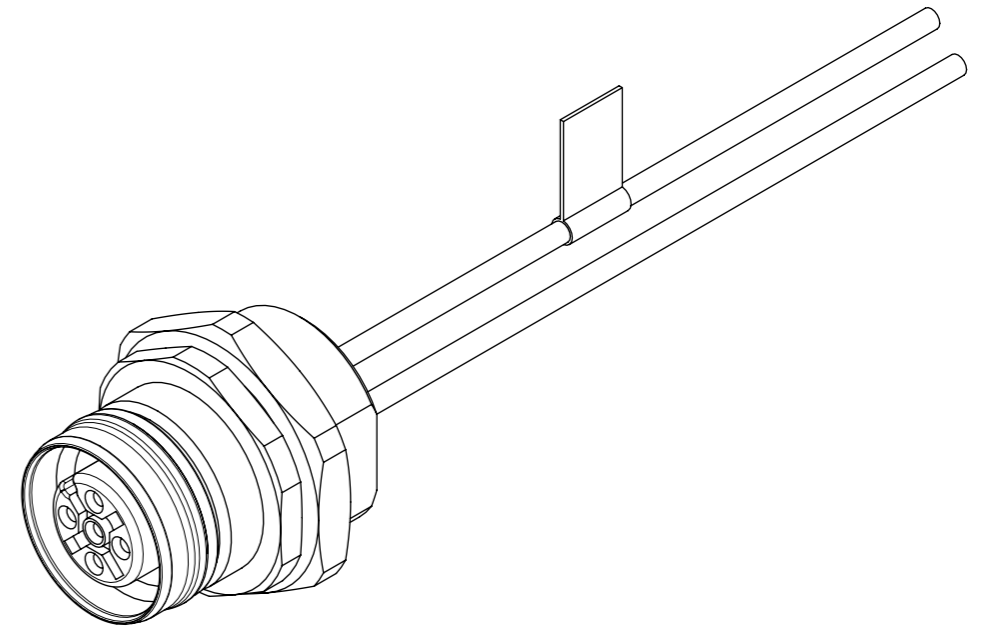
MOLEX P/N	ENGINEERING NUMBER	DESCRIPTION	L [mm]	TOL
1204040023	YR8U20E02C300	REC U12 8P AC FE M16 FM WIR BRASS NI 0.3M	300	+40
1204040043	YR8U20E02C500	REC U12 8P AC FE M16 FM WIR BRASS NI 0.5M	500	+40


PART LIST 12P AC

MOLEX P/N	ENGINEERING NUMBER	DESCRIPTION	L [mm]	TOL
1204040024	YRCU20E01C300	REC U12 12P AC FE M16 FM WIR BRASS NI 0.3M	300	+40
1204040044	YRCU20E01C500	REC U12 12P AC FE M16 FM WIR BRASS NI 0.5M	500	+40

PART LIST 4P DC

MOLEX P/N	ENGINEERING NUMBER	DESCRIPTION	L [mm]	TOL
1204063003	ERYA2U20E03C300	REC U12 4P DC FE M16 FM WIR BRASS NI 0.3M	300	+40
1204063006	ERYA2U20E03C500	REC U12 4P DC FE M16 FM WIR BRASS NI 0.5M	500	+40



FUNCTIONAL SYMBOLS ▽A = 0 ▽E = 0 ▽V = 0	THIS DRAWING CONTAINS INFORMATION THAT IS PROPRIETARY TO MOLEX ELECTRONIC TECHNOLOGIES, LLC AND SHOULD NOT BE USED WITHOUT WRITTEN PERMISSION		CURRENT REV DESC: CHANGED MIN. TEMP. IN TABLE		
	mm	SCALE 2:1	 REC U12 XP XC FE M16 FM WIR BRASS NI XM PRODUCT CUSTOMER DRAWING		
	GENERAL TOLERANCES (UNLESS SPECIFIED)				
	ANGULAR TOL ± 1.0°				
4 PLACES ±					
DIVISIONAL SYMBOLS	3 PLACES ±	EC NO: 736602	2023/01/30	DOCUMENT NUMBER 1204040021	
	2 PLACES ± 0.05	DRWN: RSCHIEBER	2023/01/31		DOC TYPE PSD
	1 PLACE ± 0.3	CHK'D: RSILLER	2023/01/31		DOC PART 000
	0 PLACES ± 0.5	APPR: RSILLER	2023/01/31		REVISION A1
DRAFT WHERE APPLICABLE MUST REMAIN WITHIN DIMENSIONS		THIRD ANGLE PROJECTION	DRAWING A3-SIZE	SERIES 120404	
		MATERIAL NUMBER SEE PART LIST	CUSTOMER GENERAL MARKET	SHEET NUMBER 3 OF 3	