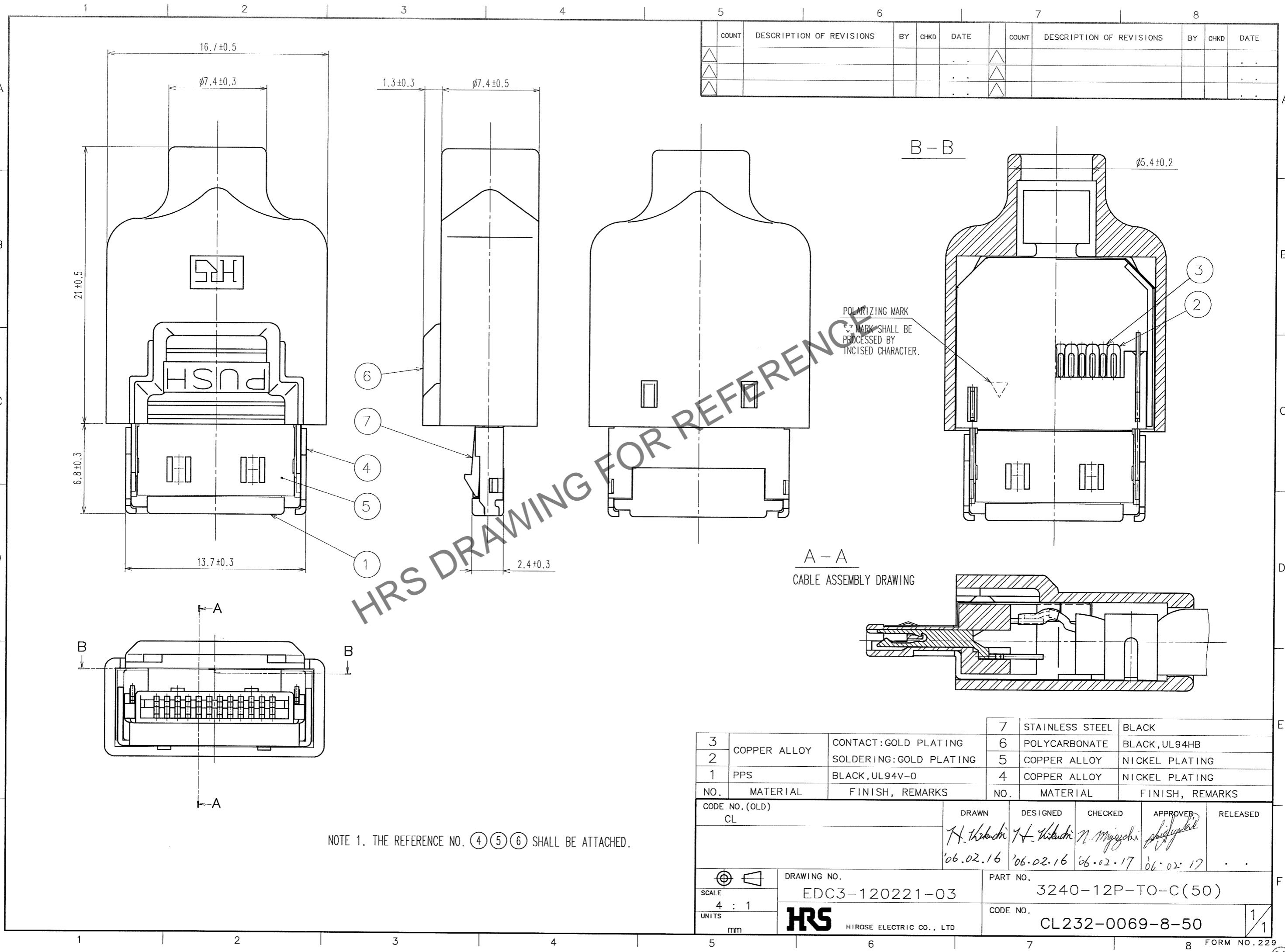


Jul.1.2024 Copyright 2024 HIROSE ELECTRIC CO., LTD. All Rights Reserved.
 In case of consideration for using Automotive equipment / device which demand high reliability, kindly contact our sales window correspondents.



COUNT	DESCRIPTION OF REVISIONS	BY	CHKD	DATE	COUNT	DESCRIPTION OF REVISIONS	BY	CHKD	DATE
△					△				
△					△				
△					△				

HRS DRAWING FOR REFERENCE

NOTE 1. THE REFERENCE NO. (4) (5) (6) SHALL BE ATTACHED.

3	COPPER ALLOY	CONTACT: GOLD PLATING	7	STAINLESS STEEL	BLACK
2		SOLDERING: GOLD PLATING	6	POLYCARBONATE	BLACK, UL94HB
1	PPS	BLACK, UL94V-0	5	COPPER ALLOY	NICKEL PLATING
NO.	MATERIAL	FINISH, REMARKS	4	COPPER ALLOY	NICKEL PLATING

CODE NO. (OLD)	CL	DRAWN	DESIGNED	CHECKED	APPROVED	RELEASED
		H. Hasegawa	H. Hasegawa	N. Miyazaki	[Signature]	
		'06.02.16	'06.02.16	06.02.17	06.02.17	

SCALE 4 : 1 UNITS mm	DRAWING NO. EDC3-120221-03 HRS HIROSE ELECTRIC CO., LTD	PART NO. 3240-12P-TO-C(50)	CODE NO. CL232-0069-8-50	1/1
-------------------------------	---	-------------------------------	-----------------------------	-----

TO