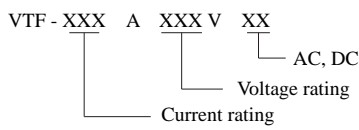




**Ordering Information:**



**Description:**

VTF fuse is a kind of fast-acting , current limiting class T fuse. It can be applied in load centers, panel boards, switchboards, feeder circuit, melting, etc.

**Features:**

- Designed according to UL248-15
- Complying with CE, UL and RoHS
- Fast acting
- Current limiting

**Ratings:**

Voltage Rating: 300V AC(1A-1200A)  
 160V DC(1A-1200A)  
 600V AC(1A-800A)  
 300V DC(1A-800A)

Current Rating: 1A-1200A

Interrupt Rating: 300V AC, 200kA  
 160V DC, 50kA  
 600V AC, 200kA  
 300V DC, 50kA

**Mechanical Dimensions:**

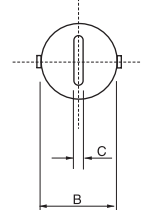
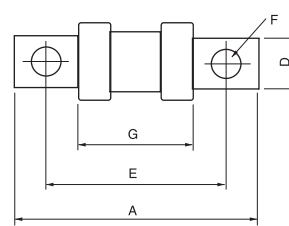
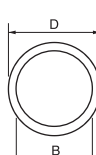
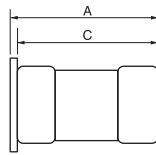
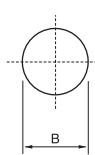
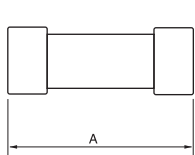


Fig.1

Fig.2

Fig.3

Voltage	Ref.Fig.	Current Rating(A)	Mechanical Dimensions(mm)						
			A	B	C	D	E	F	G
300	1	1-30	22.4	10.3	-	-	-	-	-
		31-60	22.4	14.1	-	-	-	-	-
	3	70-100	54.9	20.6	3.2	19.0	39.6	7.1	20.8
		110-200	62.0	26.9	4.8	22.4	43.2	8.6	21.1
		225-400	69.8	33.8	6.4	25.4	46.7	10.4	21.3
		450-600	77.7	41.1	7.8	31.8	51.6	12.2	21.3
		700-800	85.8	52.8	9.7	44.4	56.4	14.0	22.4
		1000-1200	102.0	64.0	11.2	50.8	64.3	15.5	26.2
600	1	1-30	38.1	14.5	-	-	-	-	-
	2	31-60	39.9	20.6	38.4	25.4	-	-	-
	3	70-100	75	20.8	3.2	19.0	59.7	7.1	40.1
		110-200	82.8	27.2	4.8	22.4	63.5	8.6	41.0
		225-400	92.1	41.3	6.4	25.4	69.1	10.4	43.2
		450-600	101.2	52.4	7.9	31.8	75.0	12.2	43.2
		700-800	110.0	63.5	9.5	44.4	80.5	14.1	43.2

### ● Current Rating Information (Unit:A):

300V

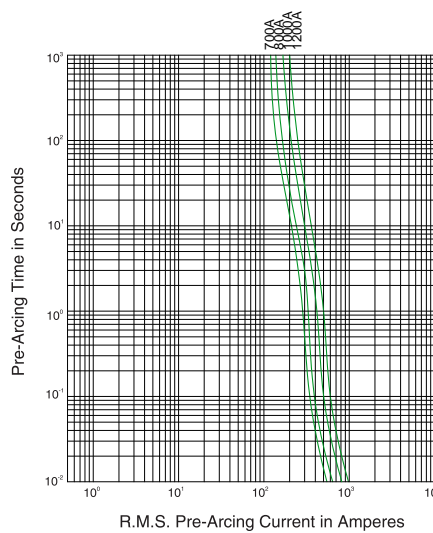
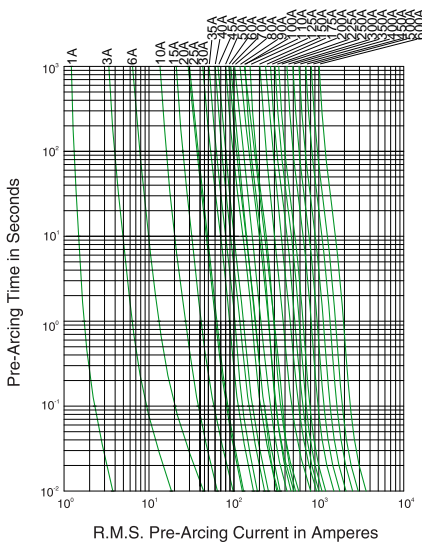
1	3	6	10	15	20	25	30	35	40	45	50	60	70	80
90	100	110	125	150	175	200	225	250	300	350	400	450	500	600
700	800	1000	1200											

600V

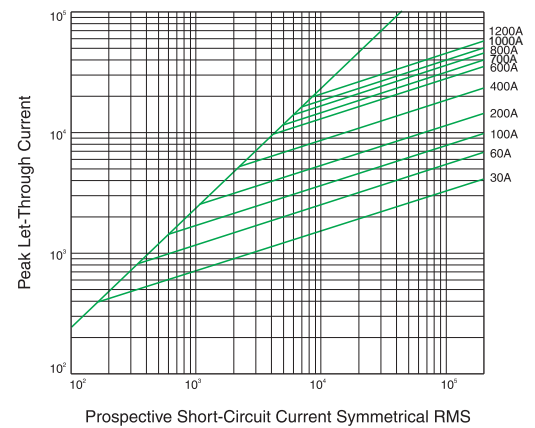
1	3	6	10	15	20	25	30	35	40	45	50	60	70	80
90	100	110	125	150	175	200	225	250	300	350	400	500	600	

### ● Electrical Characteristics:

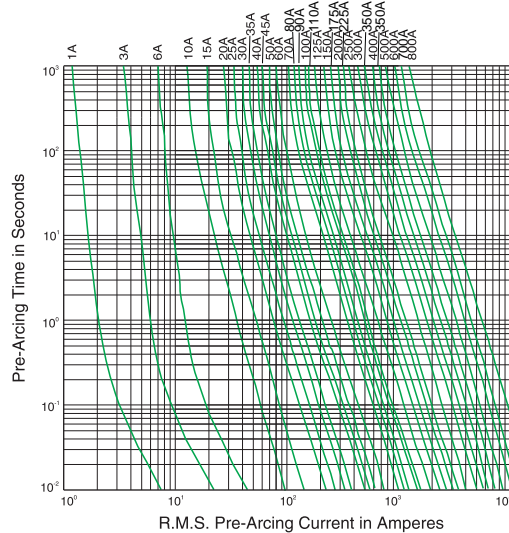
Average Time-Current Curve for 300V



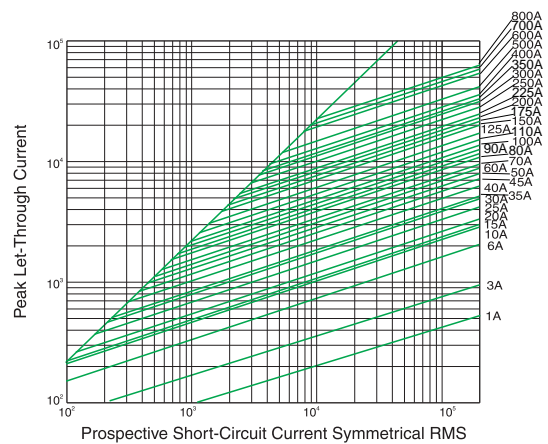
Peak Let-Thru Curve for 300V



Average Time-Current Curve for 600V



Peak Let-Thru Curve for 600V





# Model VTF, V3T, JJLS, A3T or JJS

File Number: E479968

## COMPANY

### SHENZHEN VICTORS INDUSTRIAL CO LTD

503A, Unit B, Building 3, Cloud Park, Bantian, Longgang District  
SHENZHEN, Guangdong 518129 China

## MODEL INFO

VTF, V3T, JJLS, A3T or JJS

Nonrenewable cartridge fuses: current-limiting

USES - CARTRIDGE	VALUE
Fuse Type	current-limiting

ELECTRICAL RATINGS							
Class	Amps Minimum (A)	Amps Maximum (A)	Voltage (V)	Voltage Source	Interrupting Rating, Amps (A)	Interrupting Rating, Voltage (V)	Amps (A)
T	70	100	300	ac	200000	300	70 to 100
T	70	100	160	dc	50000	160	70 to 100
T	225	400	300	ac	200000	300	225 to 400
T	225	400	160	dc	50000	160	225 to 400
T	1	30	300	ac	200000	300	1 to 30

**ELECTRICAL RATINGS**

<b>Class</b>	<b>Amps Minimum (A)</b>	<b>Amps Maximum (A)</b>	<b>Voltage (V)</b>	<b>Voltage Source</b>	<b>Interrupting Rating, Amps (A)</b>	<b>Interrupting Rating, Voltage (V)</b>	<b>Amps (A)</b>
T	1	30	160	dc	50000	160	1 to 30
T	35	60	300	ac	200000	300	35 to 60
T	35	60	160	dc	50000	160	35 to 60
T	110	200	300	ac	200000	300	110 to 200
T	110	200	160	dc	50000	160	110 to 200

The appearance of a company's name or product in this database does not in itself assure that products so identified have been manufactured under UL Solutions' Follow - Up Service. Only those products bearing the UL Mark should be considered to be Certified and covered under UL Solutions' Follow - Up Service. Always look for the Mark on the product.

UL Solutions permits the reproduction of the material contained in Product iQ subject to the following conditions: 1. The Guide Information, Assemblies, Constructions, Designs, Systems, and/or Certifications (files) must be presented in their entirety and in a non-misleading manner, without any manipulation of the data (or drawings). 2. The statement "Reprinted from Product iQ with permission" must be included in the reproduction.

Note: In the process of enhancing our systems, we are transitioning data to a new PiQ data view. This data is being verified with the "Historical" view for accuracy. Once the data is confirmed, the "Historical" view will be discontinued. During this transition, you may encounter duplicate entries or missing/outdated data. For queries during this interim period, please visit our [Historical View FAQs](#) or contact our [Customer Service](#).

## Cartridge Fuses, Nonrenewable

### COMPANY

#### SHENZHEN VICTORS INDUSTRIAL CO LTD

503A, Unit B, Building 3, Cloud Park, Bantian, Longgang District  
SHENZHEN, Guangdong 518129 China

E479968

### Nonrenewable cartridge fuses: current-limiting

Class	Cat. No.+	Interrupting Capacity		Fuse Rating	
		V ac	RMS	V ac	Amps
G	VGT, VSC, VAG, CSLC	600Vac	100,000	600Vac	0.5 - 15
		300Vdc	10,000	300Vdc	0.5 - 15
		600Vac	100,000	600Vac	16 - 20
		300Vdc	10,000	300Vdc	16 - 20
		480Vac	100,000	480Vac	25 - 30
		300Vdc	10,000	300Vdc	25 - 30
		480Vac	100,000	480Vac	35 - 60
		300Vdc	10,000	300Vdc	35 - 60
T	VTF, V3T	300Vac	200,000	300Vac	70 - 100

		160Vdc	50,000	160Vdc	70 - 100
		300Vac	200,000	300Vac	225 - 400
		160Vdc	50,000	160Vdc	225 - 400
		300Vac	200,000	300Vac	1 - 30
		160Vdc	50,000	160Vdc	1 - 30
		300Vac	200,000	300Vac	35 - 60
		160Vdc	50,000	160Vdc	35 - 60
		300Vac	200,000	300Vac	110 - 200
		160Vdc	50,000	160Vdc	110 - 200
T	<b>VTF, V6T</b>	600Vac	200,000	600Vac	110 - 200
		300Vdc	50,000	300Vdc	110 - 200
		600Vac	200,000	600Vac	70 - 100
		300Vdc	50,000	300Vdc	70 - 100
		600Vac	200,000	600Vac	225 - 400
		300Vdc	50,000	300Vdc	225 - 400

**Nonrenewable cartridge fuses: time delay, current-limiting**

Class	Cat. No. +	Interrupting Capacity		Fuse Rating	
		V ac	RMS	V ac	Amps
CC	<b>VCF</b>	600Vac	200,000	600Vac	0.1 - 30
		600Vdc	50,000	600Vdc	0.1 - 30
CC	<b>VCT</b>	600Vac	200,000	600Vac	0.1 - 30
		600Vdc	50,000	600Vdc	0.1 - 30

J	<b>VJT, V6J, JTD, LPJ, AJT, VJF, JLS, DFJ, JKS, A4J, HSJ, A6J, AJF, VJD</b>	600Vac	200,000	600Vac	0.8 - 30
		500Vdc	100,000	500Vdc	0.8 - 30
		600Vac	200,000	600Vac	35 - 60
		500Vdc	100,000	500Vdc	35 - 60
		600Vac	200,000	600Vac	450 - 600
		500Vdc	100,000	500Vdc	450 - 600

+ - Type numbers include suffix digits indicating ampere rating

Trademark and/or Tradename: *Vicfuse*

Last Updated on 2023-09-14

The appearance of a company's name or product in this database does not in itself assure that products so identified have been manufactured under UL Solutions' Follow - Up Service. Only those products bearing the UL Mark should be considered to be Certified and covered under UL Solutions' Follow - Up Service. Always look for the Mark on the product.

UL Solutions permits the reproduction of the material contained in Product iQ subject to the following conditions: 1. The Guide Information, Assemblies, Constructions, Designs, Systems, and/or Certifications (files) must be presented in their entirety and in a non-misleading manner, without any manipulation of the data (or drawings). 2. The statement "Reprinted from Product iQ with permission from UL Solutions" must appear adjacent to the extracted material. In addition, the reprinted material must include a copyright notice in the following format: "©2024 UL LLC."