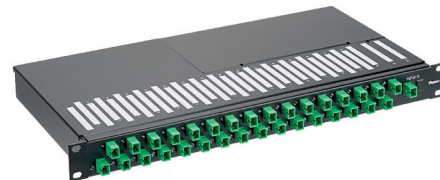


Passive Optical Network (PON) Splitter Tray

technical information

Panduit's Passive Optical LAN Splitter Trays are rack mountable enclosures that contain optical splitters used in Passive Optical Networks. These rugged enclosures are offered in a variety of configurations making them ideal to be mounted in centralized splitting locations close to the Optical Line Terminal (OLT) or remote splitting locations nearer the Optical Network Unit (ONU). Configurations include both single and dual input ports (for redundancy) that come pre-terminated with SC-APC connectors or are splice-ready, and have between 8 to 32 output ports. The enclosures are based on high quality Planar Lightwave Circuit (PLC) splitters and enable the highest performance and reliability, including minimal insertion loss, wide operating wavelength range and excellent channel-to-channel uniformity.



specifications:

Splitter technology	Planar Light Wave Circuit (PLC)					
Fiber type	Singlemode (ITU-T G. 657 Category A)					
Operating wavelength (nm)	1260-1650					
Splitter configuration	1x8	1x16	1x32	2x8	2x16	2x32
Maximum insertion loss (dB)	10.7	14.2	17.0	11.2	14.6	17.5
Uniformity (dB)	1.0	1.5	2.0	1.5	2.0	2.5
Directivity (dB)	> 55					
Return loss (dB)	> 55					
Connector type	SC-APC					
Storage temperature	-40 – 75 °C					
Operation temperature	-10 – 60 °C					
Operation/Storage humidity	85%(RH)					
Mounting	19" Rack, 1RU (EIA-310-D)					
Color	Enclosure: Black, Connector Adapters: Green Printing: White					
Compliance	Meets or Exceeds: TIA/EIA-568-C.3, TIA-604-3A (FOCIS-3), TIA/EIA-310-D, ROHS Compliant					

part number

Character	1	2	3	4	5	6	7	8	9	10	11	12	13
Example	F	C	P	9	S	P	-	1	0	8	3	G	G

1 – Fiber Product

F = Fiber

2 – Product Line

C = Cassette

3 – Product Line Subcategory

P = Passive optical LAN splitter

4 – Fiber Type

9 = OS2 singlemode fiber

5 – Splice or Pre-Terminated

S = Splice-ready

P = Pre-terminated

6 – Application

P = POL application only

7 – Dash

8, 9, 10 – Splitter Ratio

108 = 1x8 splitter

116 = 1x16 splitter

132 = 1x32 splitter

208 = 2x8 splitter

216 = 2x16 splitter

232 = 2x32 splitter

11, 12 – Adapter Connectivity

3G = SC-APC simplex adapter connectivity

13 – Manufacture

G = General/non-custom version

WORLDWIDE SUBSIDIARIES AND SALES OFFICES

PANDUIT CANADA
Markham, Ontario
cs-cdn@panduit.com
Phone: 800.777.3300

PANDUIT EUROPE LTD.
London, UK
cs-emea@panduit.com
Phone: 44.20.8601.7200

PANDUIT SINGAPORE PTE. LTD.
Republic of Singapore
cs-ap@panduit.com
Phone: 65.6305.7575

PANDUIT JAPAN
Tokyo, Japan
cs-japan@panduit.com
Phone: 81.3.6863.6000

PANDUIT LATIN AMERICA
Guadalajara, Mexico
cs-la@panduit.com
Phone: 52.33.3777.6000

PANDUIT AUSTRALIA PTY. LTD.
Victoria, Australia
cs-aus@panduit.com
Phone: 61.3.9794.9020

For a copy of Panduit product warranties, log on to www.panduit.com/warranty

For more information

Visit us at www.panduit.com

Contact Customer Service by email: cs@panduit.com
or by phone: 800.777.3300