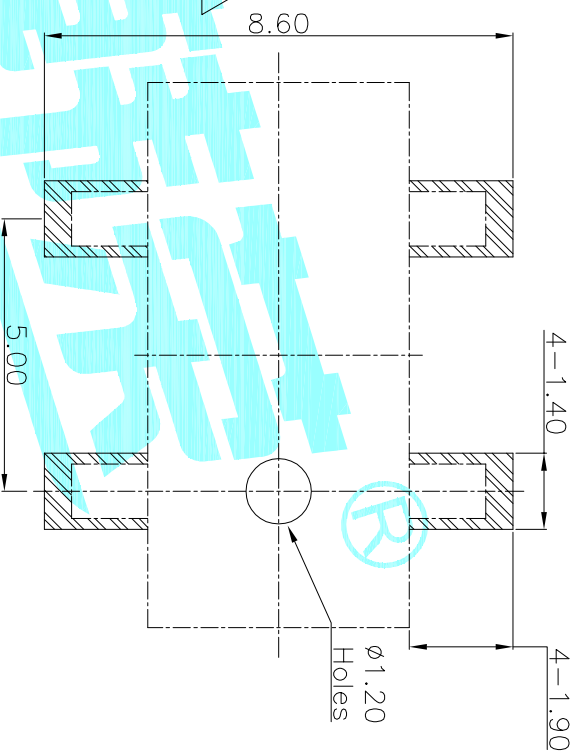
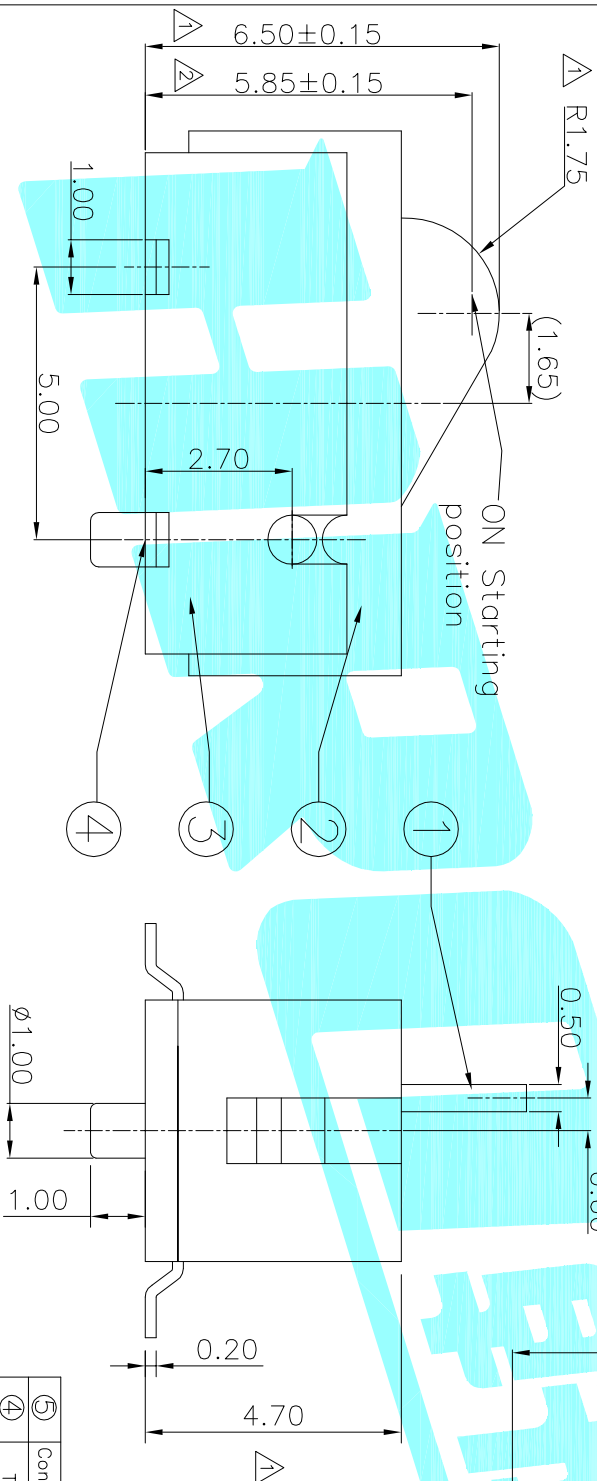


Circuit Diagram



PCB Layout(Pattern side)



NOTE:
 Rating: DC 30V 0.1A
 Operating Force: 30±10gf
 Lifetime: 100,000 Cycles

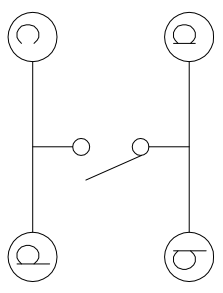
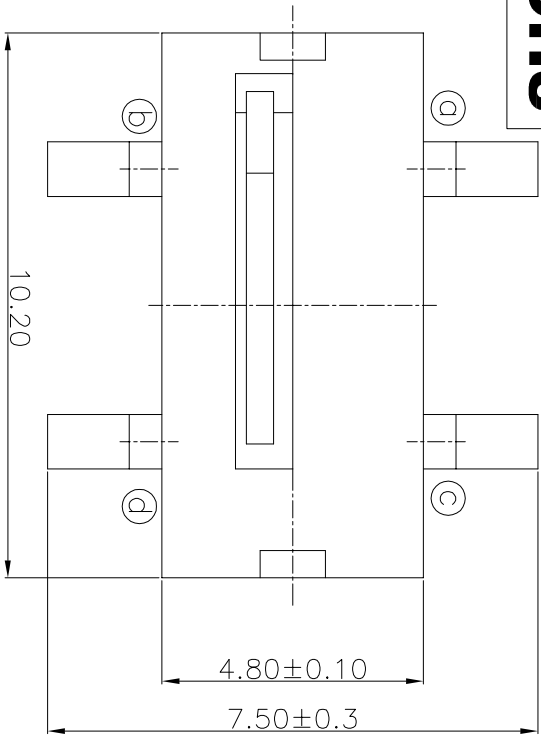
PART NO.	
K5-1631SA-02	K5-1631SN-02

ITEM	PART NAME	TER'NO.	QTY.	MATERIAL	FINISHING	REMARK
⑤	Contact Spring	—	1	Be Alloy	Ag Plated	—
④	Terminal	—	4	Brass	Ag Plated	—
③	Housing	—	1	LCP	Black	—
②	Cover	—	1	LCP	Black	—
①	Slider	—	1	LCP	Black	—

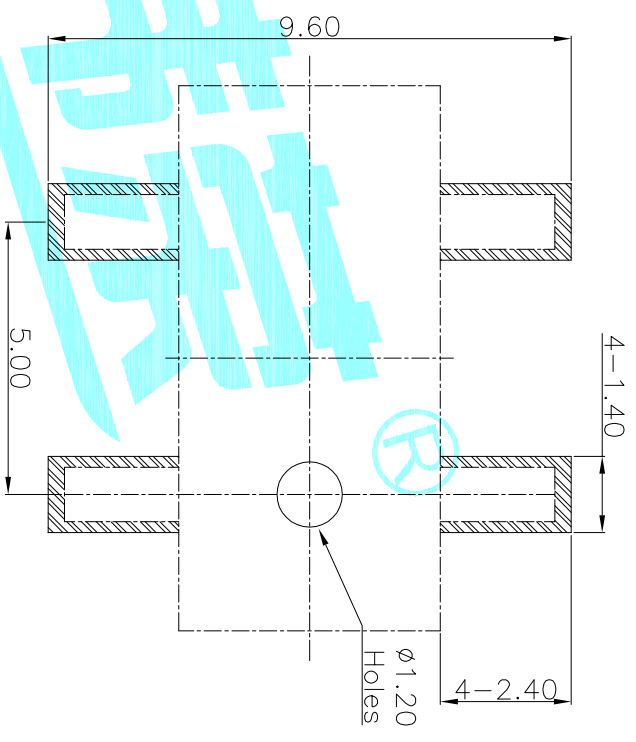
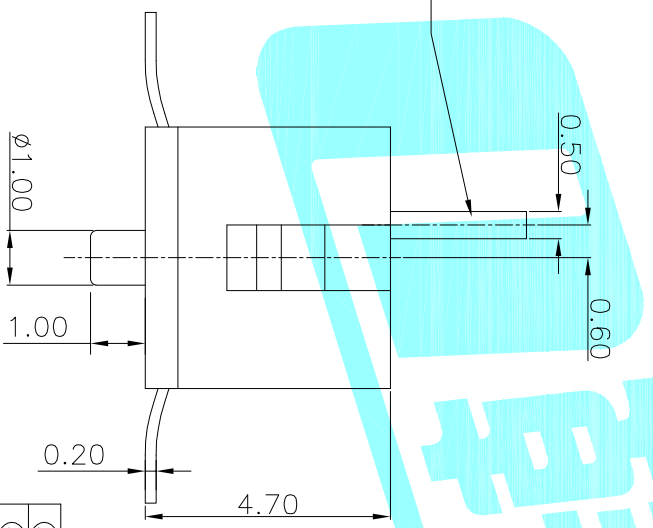
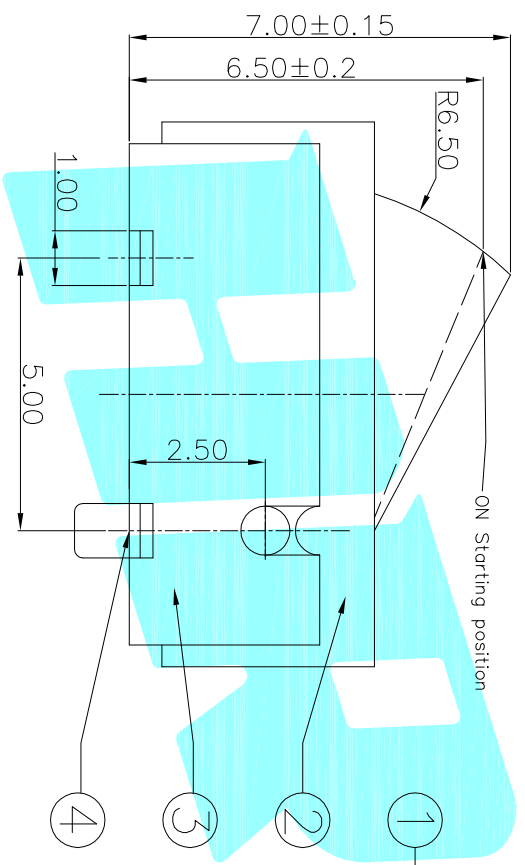
DRAWN		DATE		TITLE:	
JKUNJLU		2017/5/22		DETECTOR SWITCHS	
CHECKED		APPROVALS		PART NO.	
APPROVALS		APPROVALS		SCALE: 1:1	
TOLERANCES ARE		±2'		DRAWING NO.	
30~0.1	±0.30	ANGLE	UNIT: mm	SCALE: 1:1	PROJ:
10~30	±0.20				SHEET 1 OF 1
5~10	±0.15				
~5	±0.10				
ECN NO.	REV.	DATE.	DESCRIPTION.	CHANGE.	CHECK.
	A		NEW		
	B				
	C				



ELECTRONICS CO.,LTD



Circuit Diagram



PCB Layout(Pattern side)

NOTE:
 Rating: DC 30V 0.1A
 Operating Force: 30±10gf
 Lifetime: 100,000 Cycles

ECN NO.	REV.	DATE.	DESCRIPTION.	CHANGE.	CHECK.	APPRO.
	A		NEW			

ITEM	PART NAME	TER'NO.	QTY.	MATERIAL	FINISHING	REMARK
⑤	Contact Spring	—	1	Be Alloy	Ag Plated	—
④	Terminal	—	4	Brass	Ag Plated	—
③	Housing	—	1	PA46	Black	—
②	Cover	—	1	PA46	Black	—
①	Slider	—	1	PA46	White	—

APPROVALS		DATE	TITLE:	
DRAWN	J.X.Zhong	2013/8/27	ELECTRONICS CO.,LTD	
CHECKED			DETECTOR SWITCHS	
APPROVALS			PART NO.	
TOLERANCES ARE		30~0.15	±0.30	ANGLE
	10~30	±0.20		UNIT: mm
	5~10	±0.15	±2'	SCALE: 1:1
	~5	±0.10		PROJ:
				SHEET 1 OF 1

PART NO.	
K5-1631SA-01	K5-1631SN-01

