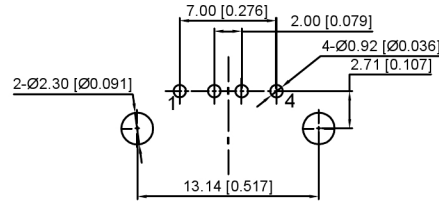
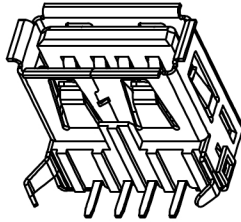
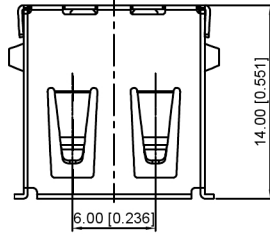
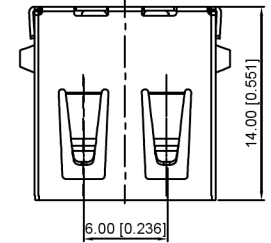


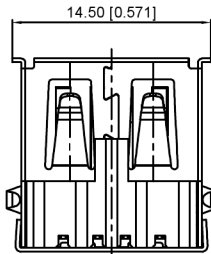
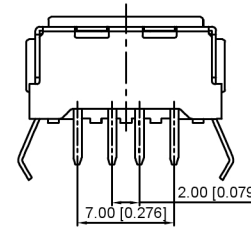
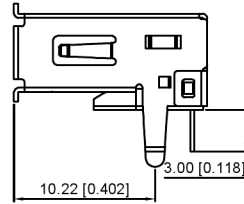
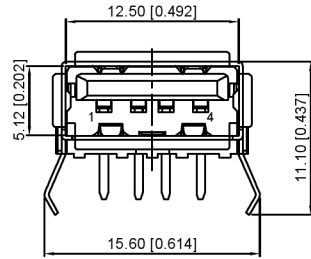
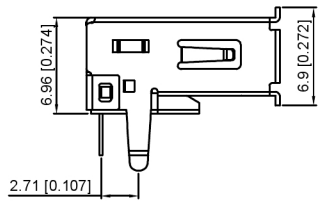
S:Scrolls



RECOMMENDED PCB LAYOUT



F:Flat



Housing Material: PBT UL94V-0, black/White  
 Contact Terminal: Brass  
 Metallic Shell: Brass/Spcc

U221-04XN-1XR69-X X

1:Au 1U"  
 6:Au 30U"  
 1:PBT  
 2:PA6T  
 3:PA9T  
 4:LCP  
 1:SPCC 5:BRASS  
 S:Scrolls F:Flat  
 W:WHITE B:BLACK

广东星坤科技股份有限公司

DATE: / /  
 DRAWN BY: / /  
 CHECKED BY: / /  
 MARK

REVISIONS	DESCRIPTION	DATE	REVISED	APPROVED	UNSPECIFIED TOLERANCES
ANGLAR					±5°
L ≤ 4					±0.2
4 < L ≤ 16					±0.3
16 < L ≤ 63					±0.4
L > 63					±0.5

DSND	DATE	SCALE: N/A
DWN	DATE	VIEW:
CHKD	DATE	UNIT: mm/in
APPD	DATE	SIZE: A4

MODEL TYPE:
USB 2.0
PART NO.:
DWG NO.:
U221-04XN-1XR69-XX

文件工程章