



# GBJ15005 THRU GBJ1510 BRIDGE RECTIFIERS

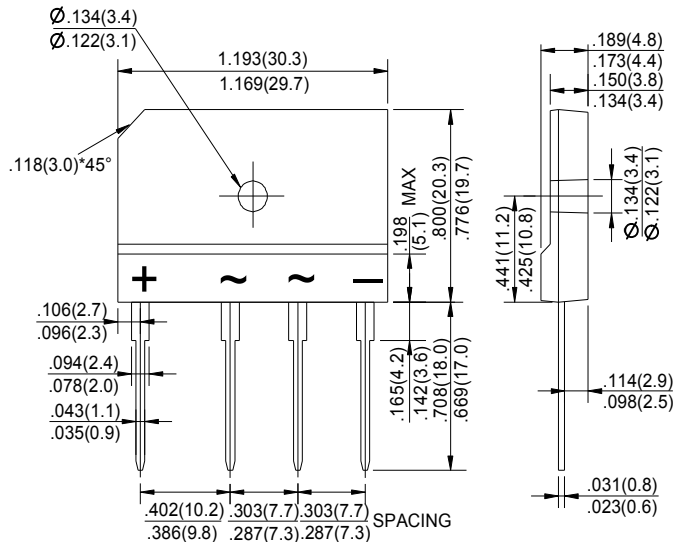
## Features

- Glass Passivated Die Construction
- Low Reverse Leakage Current
- Surge Overload Rating to 240A Peak
- Ideal for Printed Circuit Board Applications
- Plastic Material - UL Flammability Classification 94V-0
- UL Listed Under Recognized Component Index, File Number # E469616

## Mechanical Data

- Case: Molded Plastic
- Terminals: Plated Leads, Solderable per MIL-STD-202, Method 208
- Polarity: Molded on Body
- Mounting: Through Hole for #6 Screw
- Mounting Torque: 5.0 in-lbs Maximum
- Weight: 6.6 grams (approx)
- Marking: Type Number

## GBJ



Dimensions in inches and (millimeters)

## Maximum Ratings and Electrical Characteristics @ T<sub>A</sub> = 25°C unless otherwise specified

Single phase, 60Hz, resistive or inductive load.  
For capacitive load, derate current by 20%.

CHARACTERISTICS	SYMBOL	GBJ 15005	GBJ 1501	GBJ 1502	GBJ 1504	GBJ 1506	GBJ 1508	GBJ 1510	UNIT
Maximum Recurrent Peak Reverse Voltage	V <sub>RRM</sub>	50	100	200	400	600	800	1000	V
Maximum RMS Voltage	V <sub>RMS</sub>	35	70	140	280	420	560	700	V
Maximum DC Blocking Voltage	V <sub>DC</sub>	50	100	200	400	600	800	1000	V
Maximum Average Forward Rectified Current (with heatsink Note 2) @ T <sub>c</sub> =100°C (without heatsink)	I <sub>(AV)</sub>					15.0			A
Peak Forward Surge Current 8.3ms Single Half Sine-Wave Super Imposed on Rated Load (JEDEC Method)	I <sub>FSM</sub>					240			A
Maximum Forward Voltage at 7.5A DC	V <sub>F</sub>					1.1			V
Maximum DC Reverse Current at Rated DC Blocking Voltage @ T <sub>J</sub> =25°C @ T <sub>J</sub> =125°C	I <sub>R</sub>					10.0			μA
I <sup>2</sup> t Rating for Fusing (t<8.3ms)	I <sup>2</sup> t					240			A <sup>2</sup> s
Typical Junction Capacitance Per Element (Note1)	C <sub>J</sub>					60			pF
Typical Thermal Resistance	R <sub>θJC</sub>					0.8			°C/W
Operating Temperature Range	T <sub>J</sub>					-55 to +150			°C
Storage Temperature Range	T <sub>STG</sub>					-55 to +150			°C

NOTES: 1.Measured at 1.0MHz and applied reverse voltage of 4.0V DC.

2.Device mounted on 300mm\*300mm\*1.6mm Cu plate heatsink.



# GBJ15005 THRU GBJ1510 BRIDGE RECTIFIERS

## Characteristic Curves ( $T_A=25^\circ\text{C}$ unless otherwise noted)

