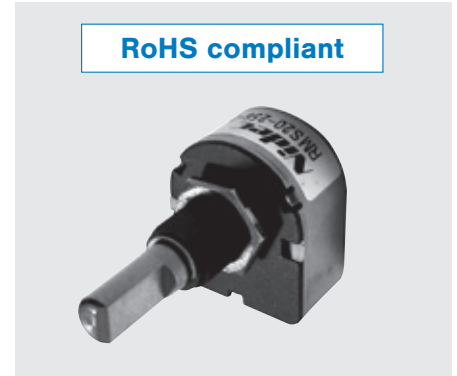
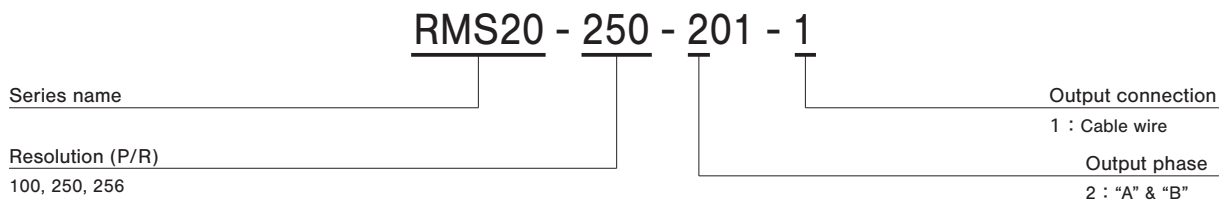


FEATURES

- High resolution of 256 P/R and fine setting
- Lower consumption of electric power (15 mA maximum) due to magnetic method
- Long life for 10^5 times continuous run due to contactless & magnetic method
- Square wave output (with Amp.)
- Smooth rotation for setting
- RoHS compliant



PART NUMBER DESIGNATION



LIST OF PART NUMBERS

Resolution	Item	Input voltage	Part number
100 (P/R)		5 V	RMS20-100-201-1
250 (P/R)			RMS20-250-201-1
256 (P/R)			RMS20-256-201-1

※ Verify the above part numbers when placing orders.

STANDARD SPECIFICATIONS

Electrical characteristics

Input voltage	DC5 V \pm 5 %		
Input current	15 mA maximum (No load)		
Output wave form	Square wave		
Output phases	A, B		
Resolution	100	250	256
Phase difference of outputs A & B	$90^\circ \pm 45^\circ$		
Maximum frequency response	5 kHz		
Output signal	"1 (High)"	+ 4.5 V minimum	
	"0 (Low)"	+ 0.5 V maximum	
Sensor	Magneto-resistive element		
Output Sink Current	1 mA maximum		

Mechanical characteristics

Rotational torque	4.90 mN·m {50 gf·cm} maximum		
Inertia	3 g·cm ² maximum		
Shaft loading (When mounting)	Radial	9.81 N {1 kgf} maximum	
	Axial	9.81 N {1 kgf} maximum	
Rotational life	10^5 revolution		
Net weight	Approx. 20 g		
Strength of tighten screw	0.49 N·m {5 kgf·cm} maximum		

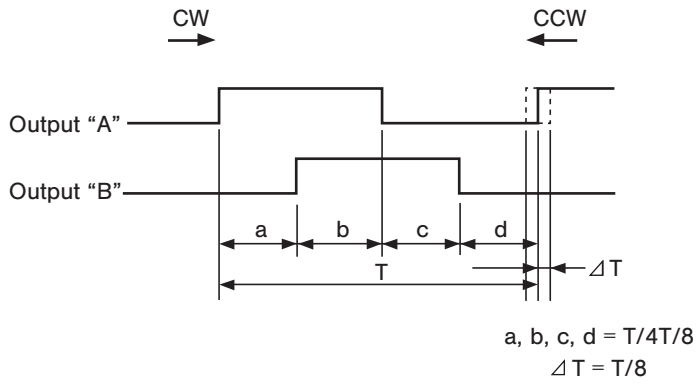
Environmental characteristics

Operating temp. range	- 10 ~ 60 °C		
Storage temp. range	- 40 ~ 70 °C		
Protection grade	IP40		

RMS20

MAGNETIC ENCODERS

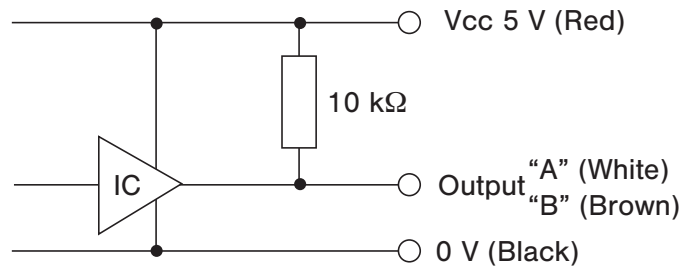
OUTPUT



ELECTRICAL WIRING

Red	Power ⊕
Brown	Output "B"
White	Output "A"
Black	Power 0 (V)

OUTPUT CIRCUIT



Sink current 1 mA maximum (at 25 °C)