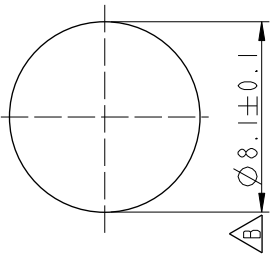
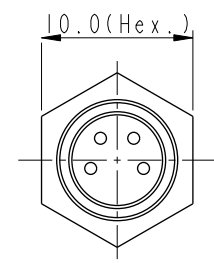
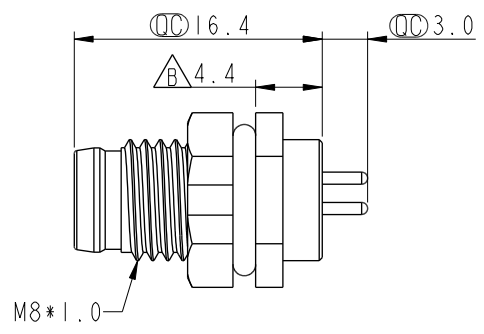
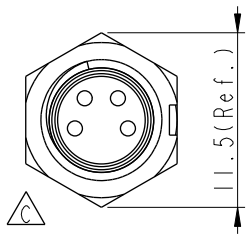


THIS DOCUMENT IS SUBJECT TO CHANGE WITHOUT NOTICE. IT IS CONFIDENTIAL AND A PROPERTY OF Amphenol LTW. DISCLOSURE TO THIRD PARTY HAS TO BE AUTHORIZED BY Amphenol LTW.

REV.	ECN NO.	DATE	SIGN	DESCRIPTION
D	C200518	2020/04/25	Peng	△ XI
E	C210686	2021/05/11	Vicky	△ X5
F	C221880	2022/12/06	Vicky	△ XI

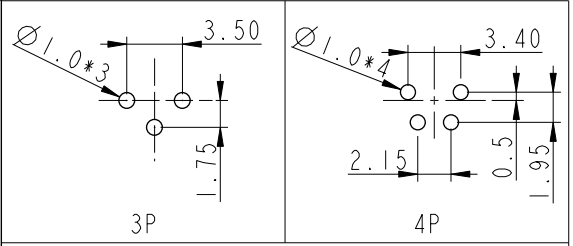
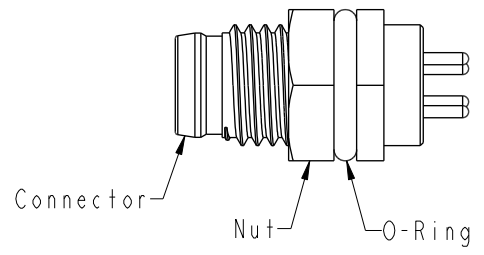


Recommended Panel Cut-Out

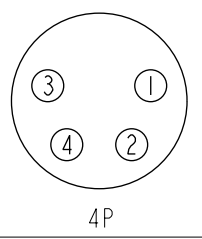
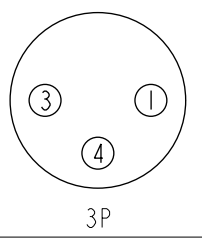


△ E
8P-XXPMP-SF7001

XX: No. Of Pin



△ B PCB Layout



△ E Pin Assignments Front View

- △ D △ E
Note:
- * RoHS Compliant
 - * △ C Important dimension
 - △ F * Waterproof rate: IP67, unmated Connector
 - Housing: Thermoplastic, Black
 - Pin: Copper alloy, Gold plated
 - * Nut: Thermoplastic, Black
 - * O-Ring: Rubber, Black
 - * For panel thickness(screw type)max: 1.9mm
 - * For panel thickness(snap-in type)max: 3.0mm
 - * Nut is packed separately in pe bag

UNIT:mm		TITLE	O SEN, M8 PLASTIC RECEPTACLE, M, M, PCB S	
TOLERANCE	.X ±0.25	SCALE	2:1	SIZE A4
.XX ±0.1	.XXX ±0.05	REV.	F	WC-REV. A.3
ANGLES ±1°		△ C △ E △ C Inspection item		

Amphenol LTW
安費諾亮泰企業股份有限公司

ITEM NO	DRAWN BY	DATE
	Zhang Xing	2010-08-16
DWG NO	CHECKED BY	DATE
△ E 8P-XXPMP-SF7001	Tina	2010-08-16
CUSTOMER	APPROVED BY	DATE
ALTW	Can	2010-08-16