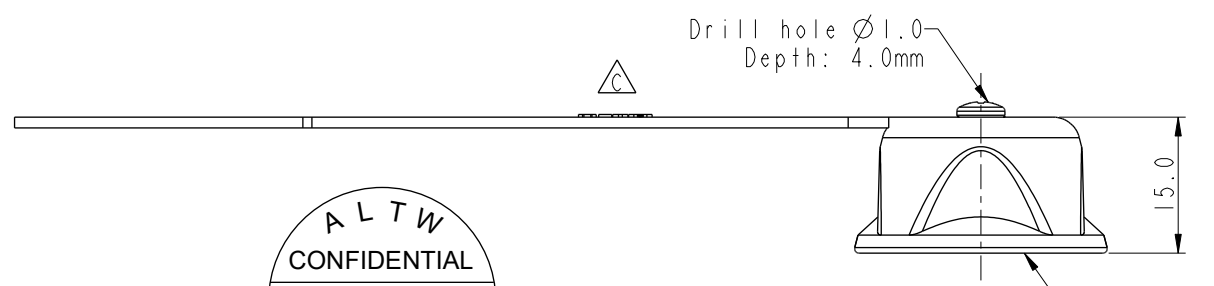
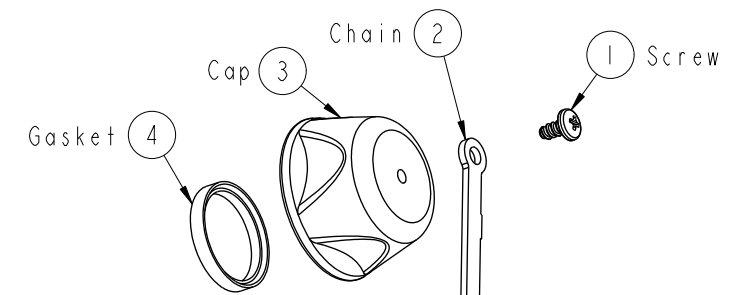
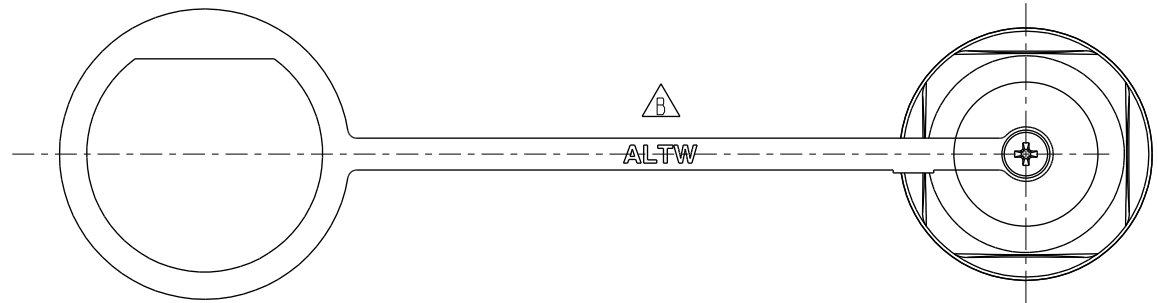
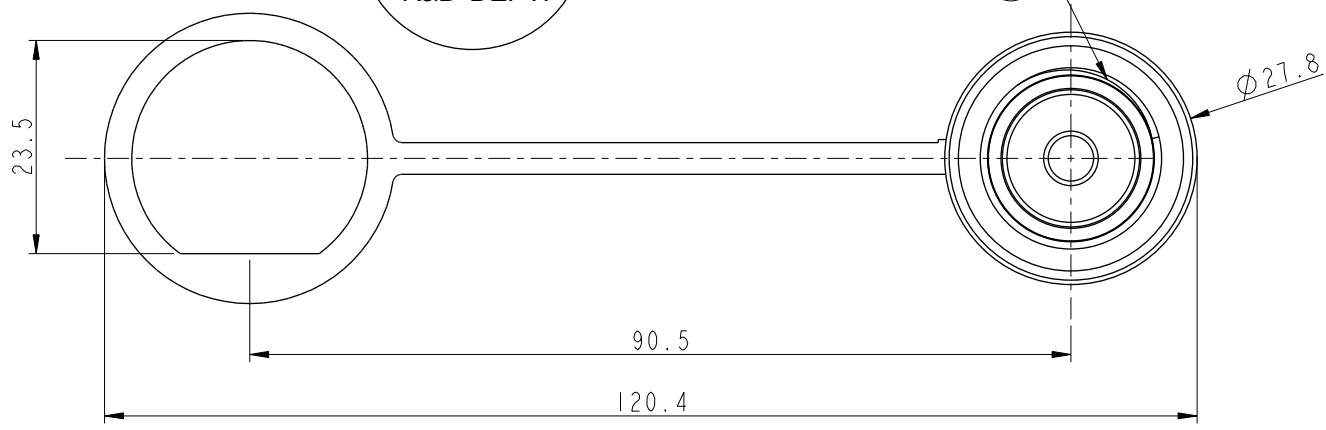


THIS DOCUMENT IS SUBJECT TO CHANGE WITHOUT NOTICE. IT IS CONFIDENTIAL AND A PROPERTY OF AMPHENOL LTW. DISCLOSURE TO THIRD PARTY HAS TO BE AUTHORIZED BY AMPHENOL LTW.

REV.	ECN NO.	DATE	SIGN	DESCRIPTION
A	Initial Release	2013/10/03	Vicky	Old Item No. CAP-WBGFSPCI
B	LEN1730395	2017/03/28	Vicky	Update Logo
C	C201083	2020/07/16	Ruru	△C X3



**ALTW**  
 CONFIDENTIAL  
 2020-07-16  
 R&D DEPT.



- △C Note:
- \* Waterproof Rate: IP67
  - \* Chain: Thermoplastic, Black
  - \* Cap: Thermoplastic, Black
  - \* Gasket: Rubber, Black
  - \* Screw: Metal
  - \* Screw not allow tight (chain be revolve)

UNIT: mm		
TOLERANCE		
.X	±0.25	
.XX	±0.1	
.XXX	±0.05	
ANGLES	±1°	

TITLE ACC, RJ, WP CAP SCREW, W/RB LEAD			
SCALE 6:5	SIZE A4	SHEET 1 OF 1	
REV. C	WC-REV. A.3	◎: Inspection item	

**Amphenol LTW**  
 安費諾亮泰企業股份有限公司

ITEM NO. CAP-WBGFSPCI	DRAWN BY Vicky	DATE 2017-03-28
DWG NO. CAP-WBGFSPCI	CHECKED BY Rita	DATE 2017-03-28
CUSTOMER ALTW	APPROVED BY Max	DATE 2017-03-28