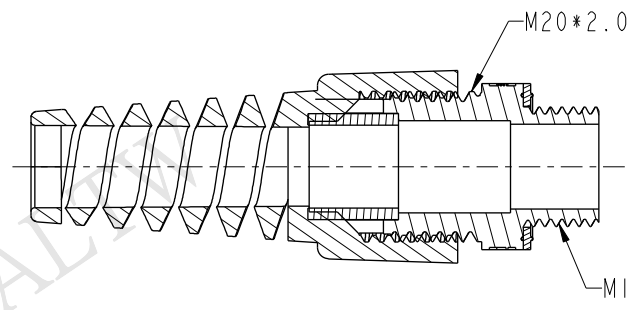
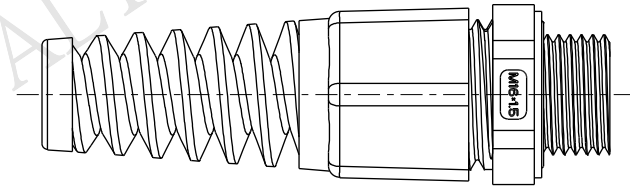
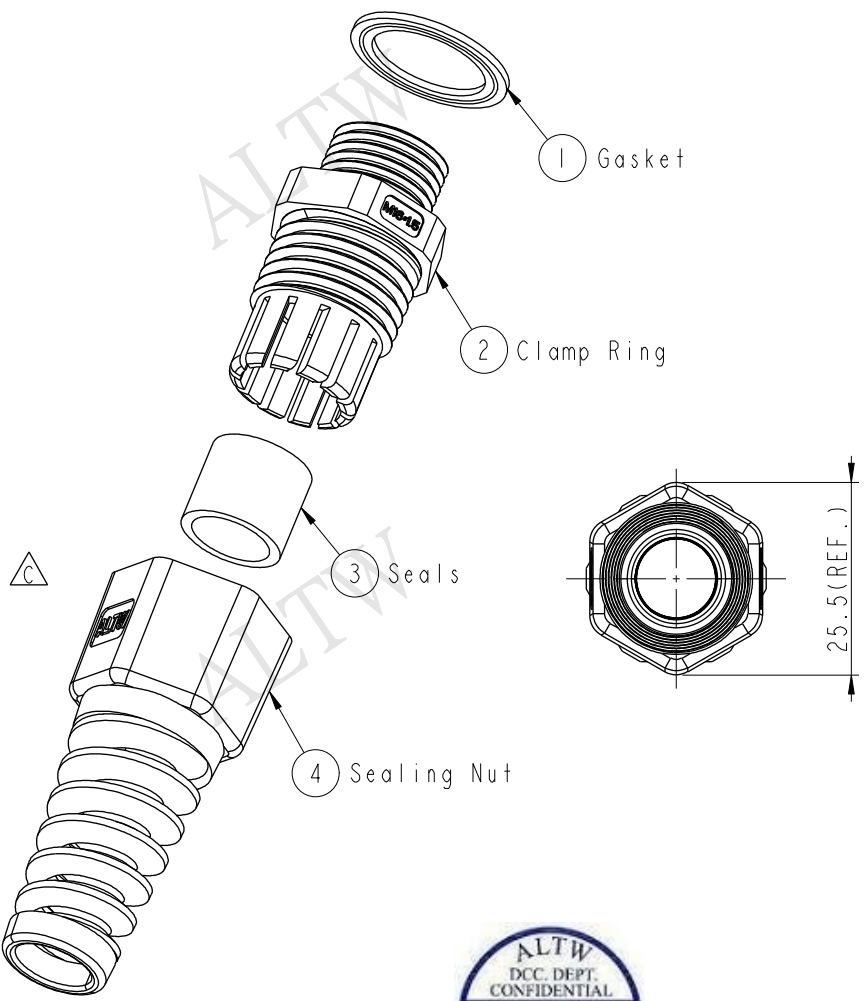
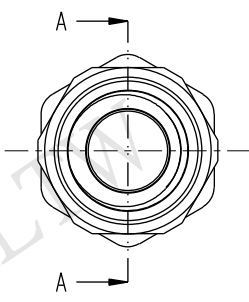
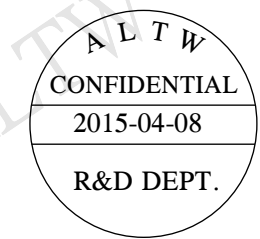


REV.	ECN NO.	DATE	SIGN	DESCRIPTION
B	LE3-6C0030	2006/12/06	Jerry	Remove Screw Nut
C	LEN1560193	2015/04/08	Ruru	Change Logo



截面 A-A
比例 1:1



- Note:
- * Waterproof Rate: IP68
 - * Clamp Ring: Nylon, Black
 - * Sealing Nut: Nylon, Black
 - * Gasket: EPDM, Black
 - * Seals: EPDM, Black
 - * Panel Thickness: 3mm max
 - * Spanner Size:
 - ② Body: 22.0mm
 - ④ Sealing Nut: 22.9mm



UNIT: mm		
TOLERANCE	.X ±0.25	
.XX ±0.1		
.XXX ±0.05		
ANGLES	±1°	

TITLE M16 Straight with SR			
SCALE 4:5	SIZE A4	SHEET 1 OF 1	
REV. C	WC-REV. A.1	QC: Inspection item	

Amphenol LTW
安費諾亮泰企業股份有限公司

ITEM NO CSG-16M008	DWG NO CSG-16M008	CUSTOMER ALTW
-----------------------	----------------------	------------------

DRAWN BY Ruru	CHECKED BY Rita	APPROVED BY Lion
------------------	--------------------	---------------------

DATE 2015-04-08	DATE 2015-04-08	DATE 2015-04-08
--------------------	--------------------	--------------------

THIS DOCUMENT IS SUBJECT TO CHANGE WITHOUT NOTICE. IT IS CONFIDENTIAL AND A PROPERTY OF Amphenol LTW. DISCLOSURE TO THIRD PARTY HAS TO BE AUTHORIZED BY Amphenol LTW.