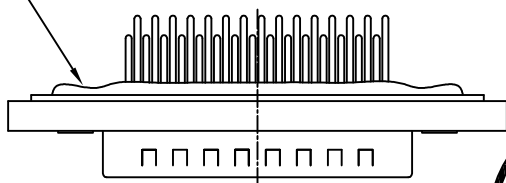
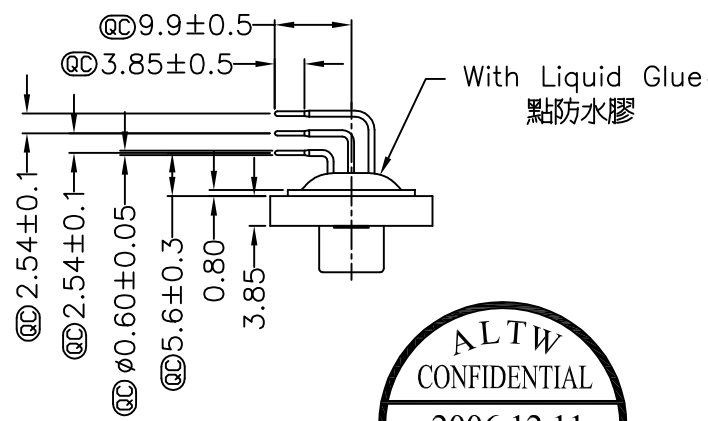
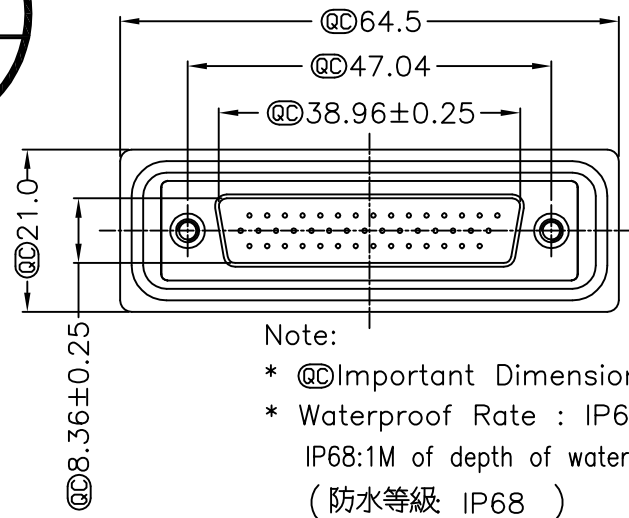
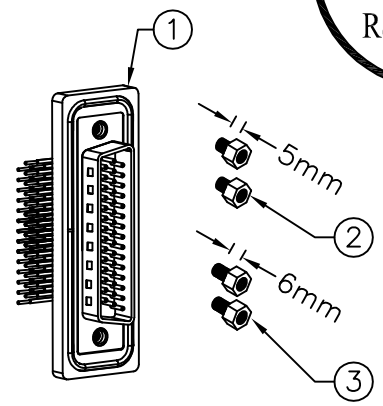


5	6	7	8
REV.	ECN NO.	DATE	SIGN
			DESCRIPTION



ALTW  
CONFIDENTIAL  
2006.12.11  
R&D DEPT.

ALTW  
DCC. DEPT.  
CONFIDENTIAL  
2007.01.22  
ISSUED

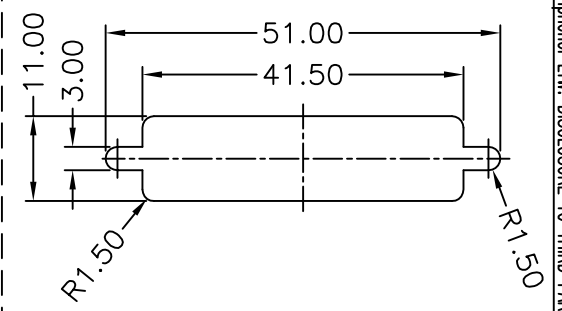


- Note:
- \* @C Important Dimension.
  - \* Waterproof Rate : IP68  
IP68:1M of depth of water 24 hours  
( 防水等級 IP68 )  
( IP68:1米水深 24小時 )
  - \* Do Mating Test After Glued  
點膠後, 須作對插測試
  - \* HD-SUB Conn. :Black Core,PBT
  - \* Plastic Jacket : Black,Nylon+GF
  - \* Pin : Copper Alloy , Gold Plated
  - \* Ring : Light Blue,Silicone
  - \* Screw : Copper Alloy,Nickel Plated,#4-40 UNC

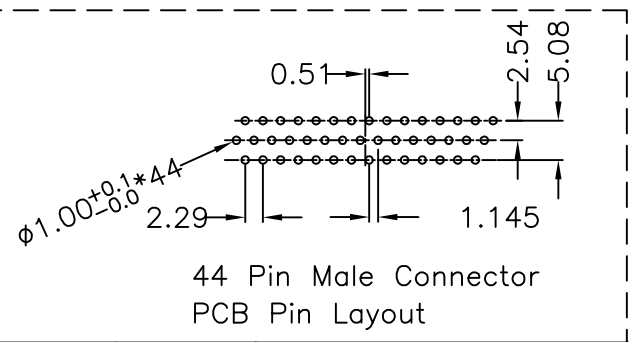


Screw L=5.0 For Panel Thickness Under 1.2mm  
適用板厚為1.2mm以下

Screw L=6.0 For Panel Thickness Between 1.2~2.0mm  
適用板厚為1.2~2.0mm



Recommended Panel Cut-Out  
建議挖孔尺寸



44 Pin Male Connector  
PCB Pin Layout

UNIT:mm		TITLE D-SUB Conn. Panel Screw HD44P M Conn. M Pin
TOLERANCE .X ±0.25 .XX ±0.1 .XXX ±0.05 ANGLES ±1°	SCALE Free	SHEET 1 OF 1
REV. A	SIZE A4	@C :Inspection Item

**Amphenol LTW**  
安費諾亮泰企業股份有限公司

ITEM NO HDB-44PMMP-SR8001	DRAWN BY DongYaLi	DATE 2006/12/11
DWG NO HDB-44PMMP-SR8001	CHECKED BY Simon	DATE 2006/12/13
CUSTOMER ALTW	APPROVED BY Max	DATE 2006/12/13

THIS DOCUMENT IS SUBJECT TO CHANGE WITHOUT NOTICE. IT IS CONFIDENTIAL AND A PROPERTY OF Amphenol LTW. DISCLOSURE TO THIRD PARTY HAS TO BE AUTHORIZED BY Amphenol LTW.