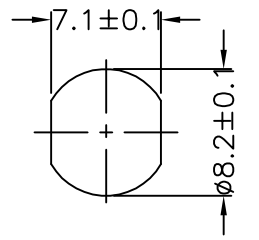
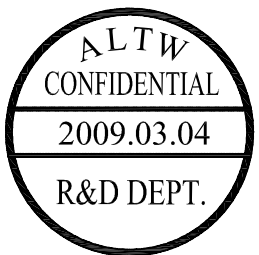
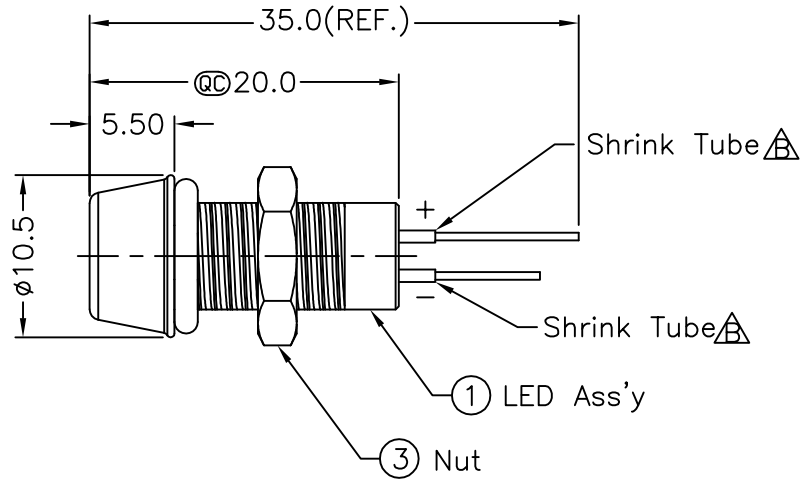
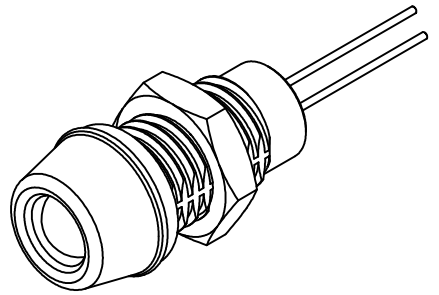


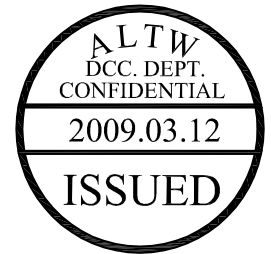
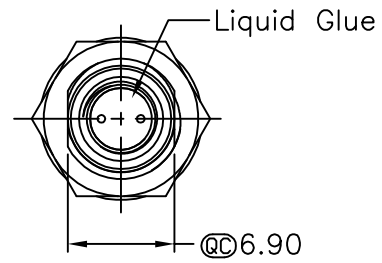
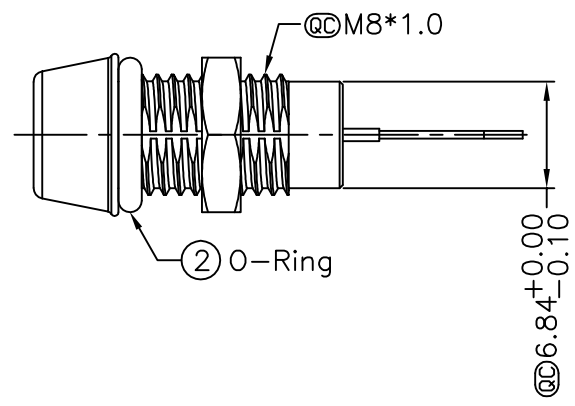
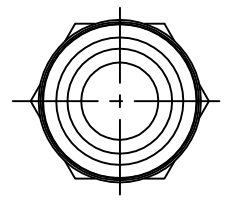
5	6	7	8
REV.	ECN NO.	DATE	SIGN
B	LE3-850100	2008/05/14	Rex
C	LEN-930470	2009/03/04	ZhaoRongFu
			DESCRIPTION
			LED Pin Add Shrink Tube
			Add Waterproof Rate



Recommended Panel Cut-Out



- Notes:
- \* @C Important Dimension To Check
  - \* Waterproof Rate: IP67
  - \* LED Holder: Brass, Nickel Plating
  - \* LED:  $\phi 5$  mm, Blue (高亮度)
  - \* Gasket: EPDM, Black
  - \* Screw Nut: Brass, Nickel Plating
  - \* Operating Voltage: DC 4V
  - \* Operating Temperature:  $-40 \sim +80^{\circ}\text{C}$
  - \* For Panel Thickness 6.5 max.



UNIT:mm	
TOLERANCE	
.X	±0.25
.XX	±0.1
.XXX	±0.05
ANGLES	±1°

TITLE		Waterproof Led ( $\phi 5$ mm) Blue, Solder Type	
SCALE	Free	SHEET	1 OF 1
REV.	C	SIZE	A4
		@C	: Inspection Item

**Amphenol LTW**  
安費諾亮泰企業股份有限公司

ITEM NO	L08-01BBAS-MR7001
DWG NO	L08-01BBAS-MR7001
CUSTOMER	ALTW

DRAWN BY	Zhao Rong Fu
CHECKED BY	Prune
APPROVED BY	LUKE

DATE	2009/03/04
DATE	2009/03/05
DATE	2009/03/05

THIS DOCUMENT IS SUBJECT TO CHANGE WITHOUT NOTICE. IT IS CONFIDENTIAL AND A PROPERTY OF Amphenol LTW. DISCLOSURE TO THIRD PARTY HAS TO BE AUTHORIZED BY Amphenol LTW.