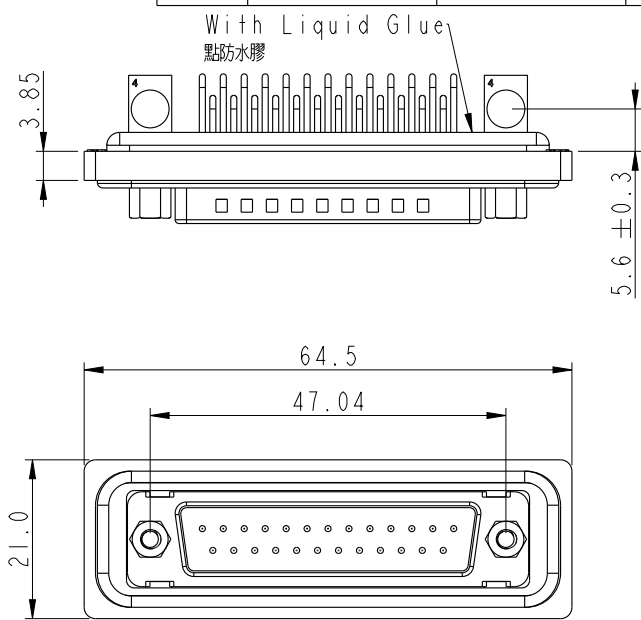
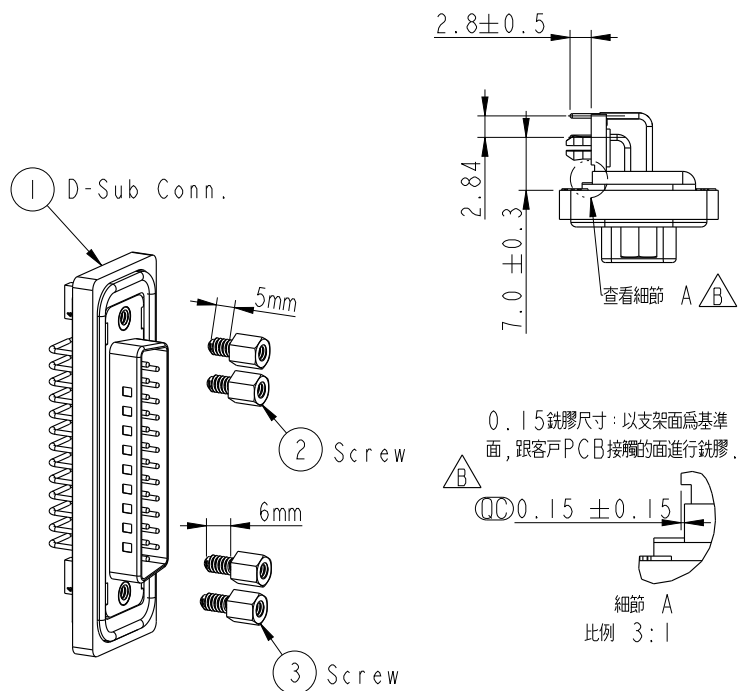


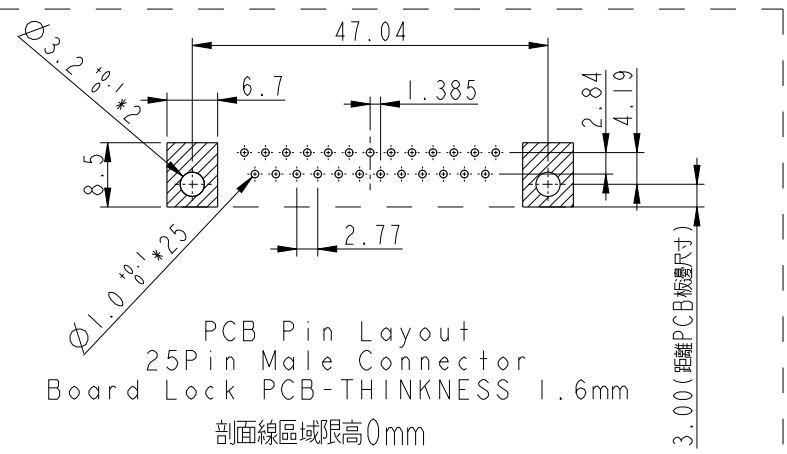
REV.	ECN NO.	DATE	SIGN	DESCRIPTION
B	C200380	2020/03/30	JC Chen	△X1



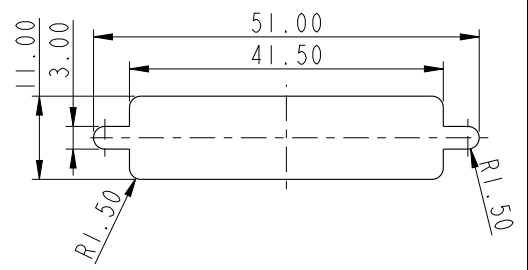
Panel Thickness
面板厚度
X (MAX.)

Screw L=5.0 For Panel Thickness Under 1.2mm
適用板厚 1.2mm 以下

Screw L=6.0 For Panel Thickness Between 1.2~2.0mm
適用板厚 1.2~2.0mm 以下



- Note:
- * Ⓞ Important Dimension.
 - * Waterproof Rate: IP68
IP68: 1m of depth of water 24 hours (IP68: 1米水深24小時)
 - * Do Mating Test After Glued
點膠後, 須作對插測試
 - * D-SUB Conn.: Black Core, PBT
 - * Plastic Jacket: Black, Nylon+GF
 - * Pin: Copper Alloy, Gold Plated
 - * Ring: Light Blue, Silicone
 - * Screw: Copper Alloy, Nickel Plated, #4-40 UNC
 - * The 90° Board Lock Needs To Connect The Iron Shell
L型支架需接鐵殼



Recommended Panel Cut-Out
建議挖孔尺寸

UNIT: mm	Ⓞ	TITLE D-SUB Connector 25Pin Male For Panel, PCB 90° Board Lock
TOLERANCE .X ±0.25 .XX ±0.1 .XXX ±0.05 ANGLES ±1°	SCALE 1:1	SIZE A4
	REV. B	SHEET 1 OF 1
	WC-REV. A.3	Ⓞ : Inspection item

Amphenol LTW
安費諾亮泰企業股份有限公司

ITEM NO. SDB-25PMMP-SB8001	DRAWN BY Yulong_wang	DATE 2016-05-24
DWG NO. SDB-25PMMP-SB8001	CHECKED BY Cary	DATE 2016-05-24
CUSTOMER ALTW	APPROVED BY Jerry	DATE 2016-05-24

THIS DOCUMENT IS SUBJECT TO CHANGE WITHOUT NOTICE. IT IS CONFIDENTIAL AND A PROPERTY OF Amphenol LTW. DISCLOSURE TO THIRD PARTY HAS TO BE AUTHORIZED BY Amphenol LTW.

A B C D E F