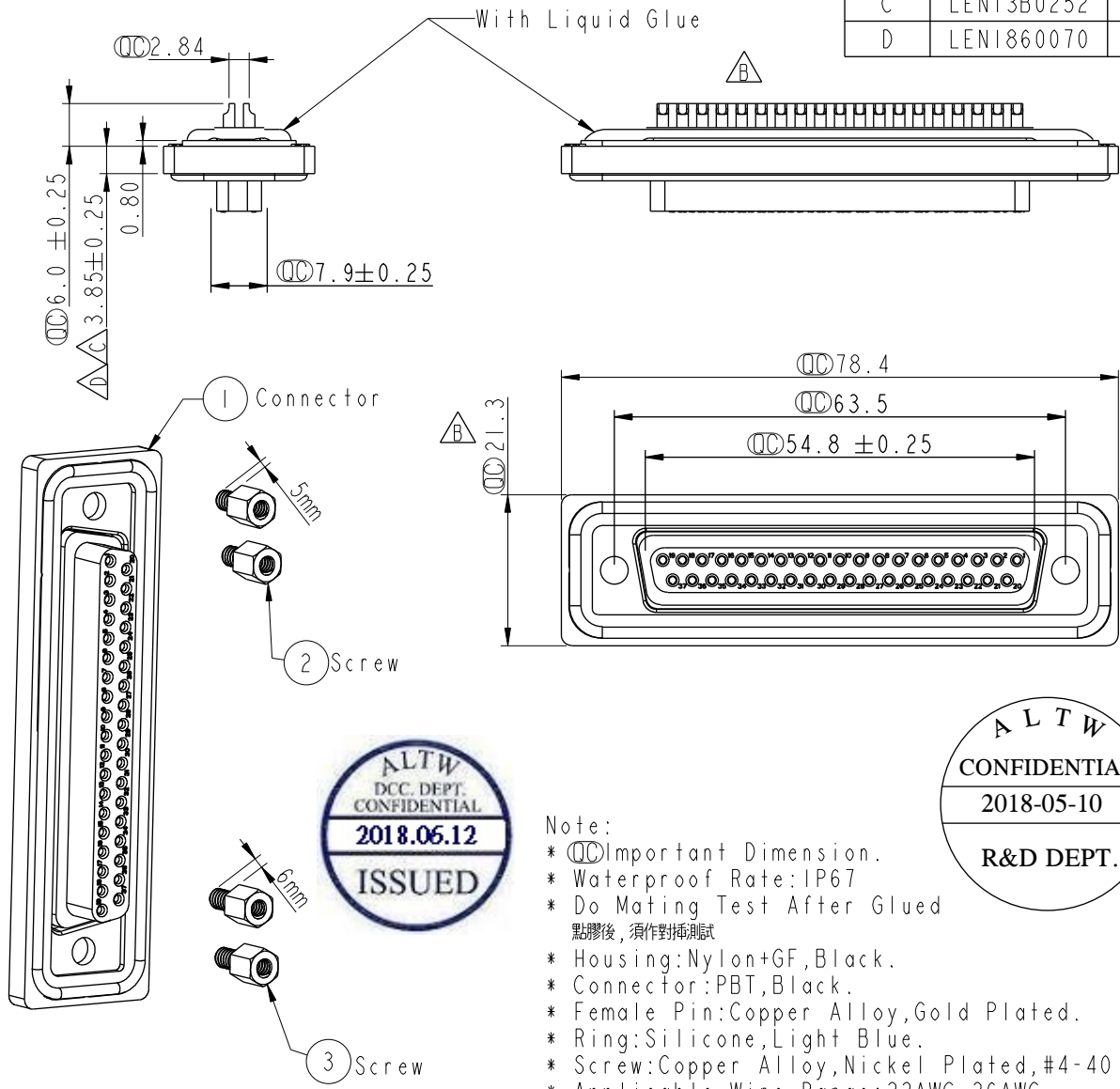
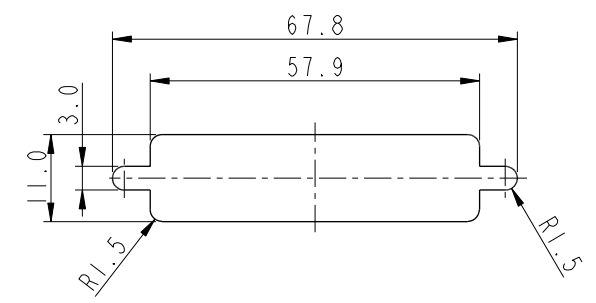


REV.	ECN NO.	DATE	SIGN	DESCRIPTION
B	LEN-980054	2009/08/03	Vicky	REF. TO ECR/N.NOTE.
C	LEN13B0252	2013/11/12	SAM	Chagne Dimsnion.
D	LEN1860070	2018/05/10	Richard	Modify Dimension



Screw L=5.0 For Panel Thickness Under 1.2mm
適用板厚為 1.2mm 以下

Screw L=6.0 For Panel Thickness Between 1.2~2.0mm
適用板厚為 1.2~2.0mm



Recommended Panel Cut-Out
建議挖孔尺寸

- Note:
- * \varnothing Important Dimension.
 - * Waterproof Rate: IP67
 - * Do Mating Test After Glued
點膠後，須作對插測試
 - * Housing: Nylon+GF, Black.
 - * Connector: PBT, Black.
 - * Female Pin: Copper Alloy, Gold Plated.
 - * Ring: Silicone, Light Blue.
 - * Screw: Copper Alloy, Nickel Plated, #4-40 UNC.
 - * Applicable Wire Range: 22AWG-26AWG.
適用電線範圍: 22AWG-26AWG

UNIT: mm		TITLE		Amphenol LTW 安費諾亮泰企業股份有限公司	ITEM NO	DRAWN BY	DATE
		D-SUB Conn. $\triangle B$ Panel Screw DB37P F Conn. F Pin			SDB-37PFFS-SL7001	Richard	2018-05-10
TOLERANCE	$\triangle B$	SCALE	SIZE	SHEET 1 OF 1	DWG NO	CHECKED BY	DATE
.X ±0.25 .XX ±0.1 .XXX ±0.05 ANGLES ±1°		1:1	A4		SDB-37PFFS-SL7001	Neo	2018-05-10
		REV.	WC-REV.	\varnothing : Inspection item	CUSTOMER	APPROVED BY	DATE
		D	A.4		ALTW	Max	2018-05-10

THIS DOCUMENT IS SUBJECT TO CHANGE WITHOUT NOTICE. IT IS CONFIDENTIAL AND A PROPERTY OF Amphenol LTW. DISCLOSURE TO THIRD PARTY HAS TO BE AUTHORIZED BY Amphenol LTW.